

WAAS CH 99540 W36A	APP CRS 360°	Rwy Idg TDZE Apt Elev	3200 968 968
--	------------------------	-----------------------------	---

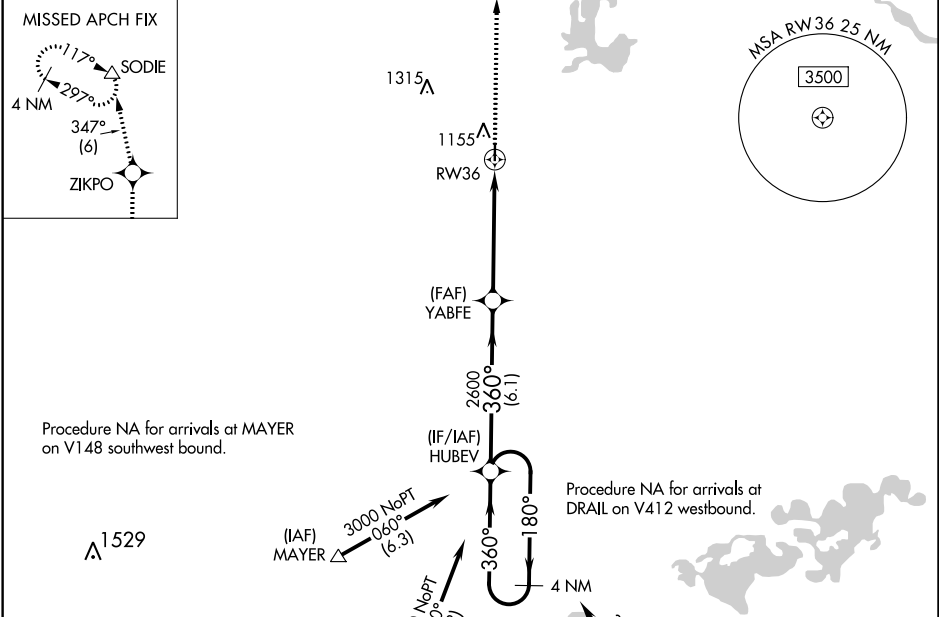
RNAV (GPS) RWY 36

BUFFALO MUNI (CFE)

For uncompensated Baro-VNAV systems, LNAV/VNAV NA below -16°C (4°F) or above 54°C (130°F). Circling Rwy 18 NA at night. Rwy 36 helicopter visibility reduction below ¾ SM NA. DME/DME RNP-0.3 NA.

MISSED APPROACH: Climb to 3400 direct ZIKPO and track 347° to SODIE and hold.

AWOS-3 120.45	MINNEAPOLIS APP CON 126.5 335.65	GCO 121.725	UNICOM 122.8 (CTAF)
-------------------------	--	-----------------------	-------------------------------

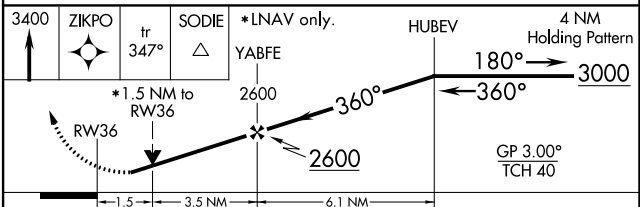
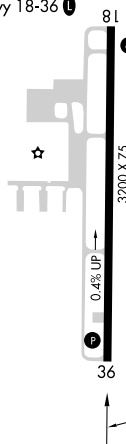


NC-1, 25 FEB 2021 to 25 MAR 2021

NC-1, 25 FEB 2021 to 25 MAR 2021

ELEV 968	TDZE 968
----------	----------

REIL Rwy 18 and 36
MIRL Rwy 18-36



CATEGORY	A	B	C	D
LPV DA	1280-1 $\frac{1}{8}$	312 (400-1 $\frac{1}{8}$)		NA
LNAV/VNAV DA	1396-1 $\frac{1}{2}$	428 (500-1 $\frac{1}{2}$)		NA
LNAV MDA	1460-1	492 (500-1)	1460-1 $\frac{3}{8}$ 492 (500-1 $\frac{3}{8}$)	NA
C CIRCLING	1460-1	492 (500-1)	1540-1 $\frac{1}{2}$ 572 (600-1 $\frac{1}{2}$)	NA