

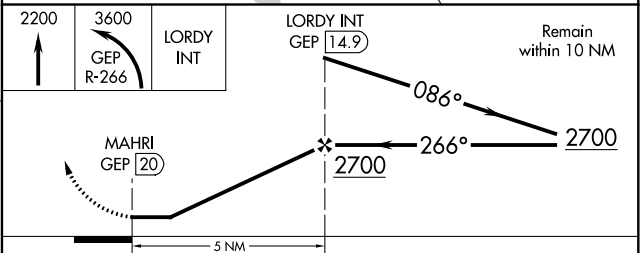
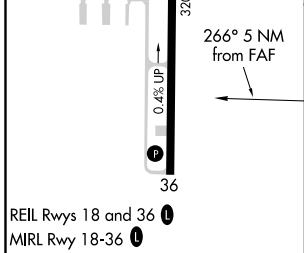
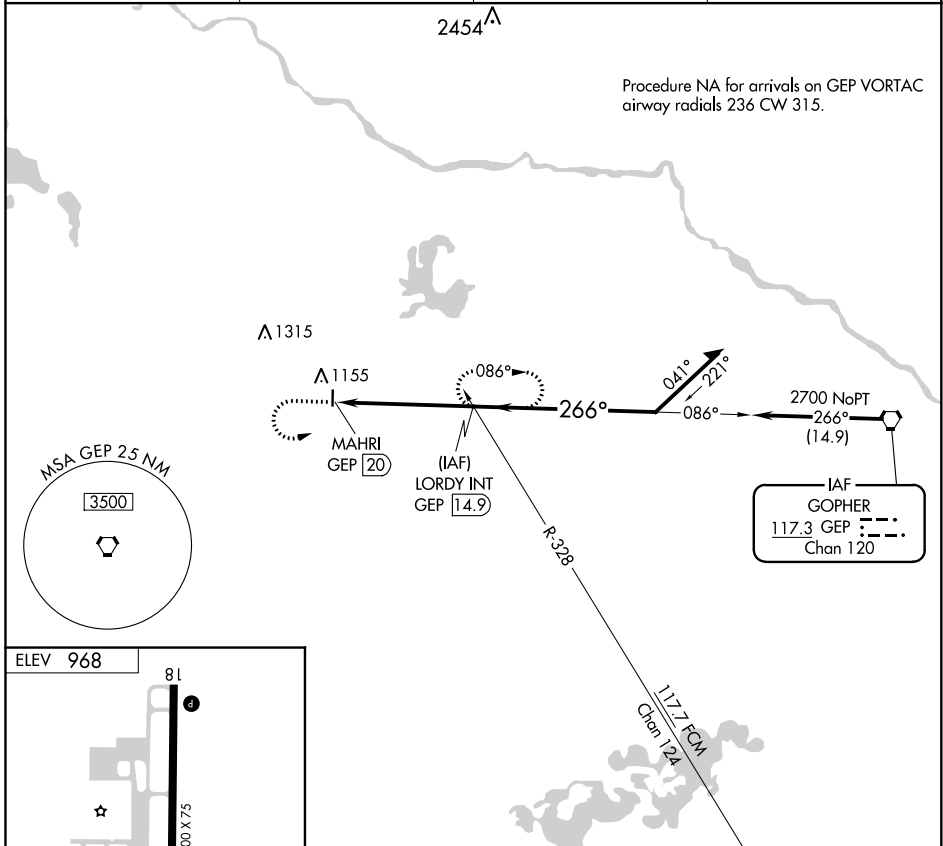
VORTAC GEP 117.3 Chan 120	APP CRS 266°	Rwy Idg TDZE Apt Elev	N/A N/A 968
---	------------------------	-----------------------------	--

VOR-A
BUFFALO MUNI (CFE)

⚠ When local altimeter setting not received, use Maple Lake altimeter setting. When VGSI inoperative, procedure NA at night.

MISSED APPROACH: Climb to 2200 then climbing left turn to 3600 via GEP VORTAC R-266 to LORDY INT/GEP VORTAC 14.9 DME and hold.

AWOS-3 120.45	MINNEAPOLIS APP CON 126.5 335.65	GCO 121.725	UNICOM 122.8 (CTAF) 0
-------------------------	--	-----------------------	--



FAF to MAP 5 NM					CATEGORY	A	B	C	D	
Knots	60	90	120	150	180	C CIRCLING	1580-1	612 (700-1)	1580-1¼ 612 (700-1¼)	NA
Min:Sec	5:00	3:20	2:30	2:00	1:40					

NC-1, 25 FEB 2021 to 25 MAR 2021

NC-1, 25 FEB 2021 to 25 MAR 2021