

WAAS CH 69520 W27A	APP CRS 276°	Rwy Idg THRE 1794 Apt Elev 1799	4199
--	------------------------	---	-------------

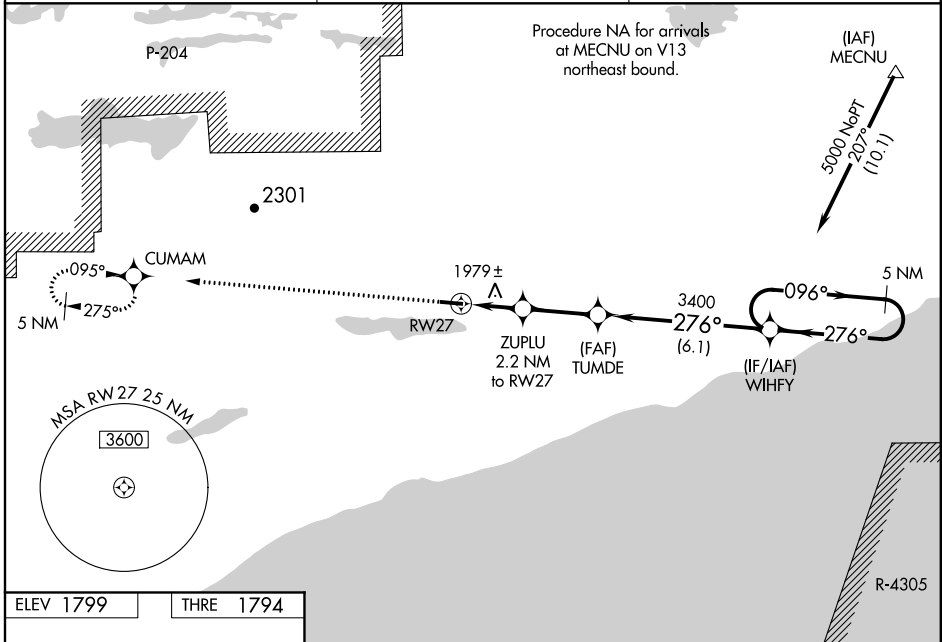
RNAV (GPS) RWY 27

GRAND MARAIS/COOK COUNTY (CKC)

⚠ Baro-VNAV NA when using Ely altimeter setting. For uncompensated Baro-VNAV systems, LNAV/VNAV NA below -18°C (0°F) or above 54°C (130°F). DME/DME RNP-0.3 NA. Visibility reduction by helicopters NA. When VGSI inop, procedure NA at night. When local altimeter setting not received, use Ely altimeter setting and increase all DA 183 feet and MDA 200 feet; increase visibility LPV 3/8 mile all Cats, LNAV/VNAV 7/8 mile all Cats, LNAV Cat C 1/2 mile and Circling Cat C 3/4 mile.

MISSED APPROACH: Climb to 7000 direct CUMAM and hold, continue climb-in-hold to 7000.

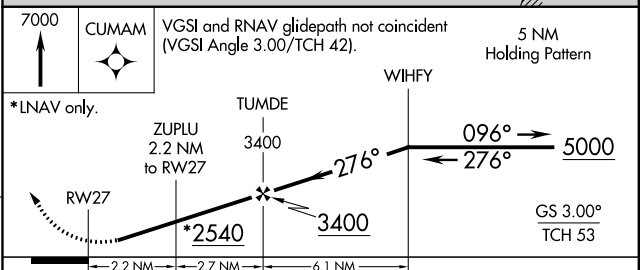
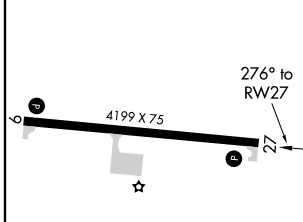
AWOS-3 119.925	PRINCETON RADIO 122.3	UNICOM 122.8 (CTAF) 0
--------------------------	---------------------------------	---------------------------------



NC-1, 26 JUN 2014 to 24 JUL 2014

NC-1, 26 JUN 2014 to 24 JUL 2014

ELEV 1799	THRE 1794
------------------	------------------



CATEGORY	A	B	C	D
LPV DA	2044-1		250 (300-1)	NA
LNAV/VNAV DA	2296-1 ⁵ / ₈		502 (500-1 ⁵ / ₈)	NA
LNAV MDA	2240-1	446 (500-1)	2240-1 ³ / ₈ 446 (500-1 ³ / ₈)	NA
CIRCLING	2340-1	541 (600-1)	2340-1 ¹ / ₂ 541 (600-1 ¹ / ₂)	NA

MIRL Rwy 9-27 **0**
REIL Rwy 9 and 27 **0**