

WAAS CH 45920 W09A	APP CRS 096°	Rwy Idg THRE 1799 Apt Elev 1799	4199
--	------------------------	---	-------------

RNAV (GPS) RWY 9

GRAND MARAIS/COOK COUNTY (CKC)

⚠ Baro-VNAV NA when using Ely altimeter setting. For uncompensated Baro-VNAV systems, LNAV/VNAV NA below -18°C (0°F) or above 54°C (130°F). DME/DME RNP-0.3 NA. Visibility reduction by helicopters NA. When VGSI inop, procedure NA at night. When local altimeter setting not received, use Ely altimeter setting and increase all DA 183 feet and MDA 200 feet; increase visibility LPV 3/8 mile all Cats, LNAV/VNAV 3/4 mile all Cats, LNAV Cat C 3/8 mile and Circling Cat C 3/4 mile.

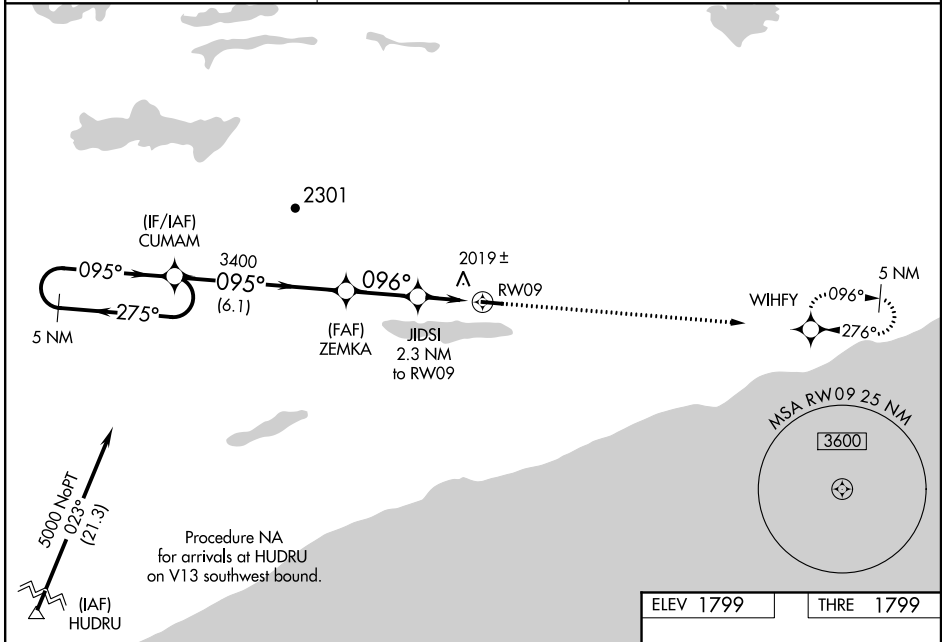
MISSED APPROACH: Climb to 7000 direct WIHFY and hold, continue climb-in-hold to 7000.

AWOS-3
119.925

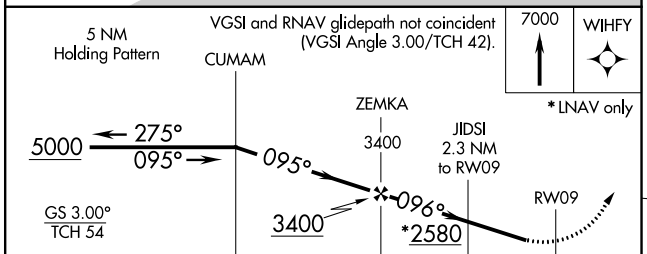
PRINCETON RADIO
122.3

UNICOM
122.8 (CTAF) 0

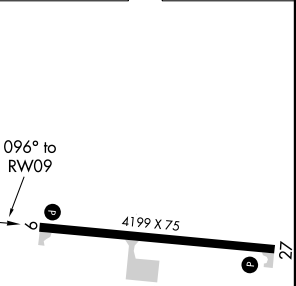
NC-1, 26 JUN 2014 to 24 JUL 2014



NC-1, 26 JUN 2014 to 24 JUL 2014



ELEV 1799	THRE 1799
-----------	-----------



CATEGORY	A	B	C	D
LPV DA	2049-1	250 (300-1)		NA
LNAV/VNAV DA	2295-1 5/8	496 (500-1 5/8)		NA
LNAV MDA	2280-1	481 (500-1)	2280-1 3/8 481 (500-1 3/8)	NA
CIRCLING	2340-1	541 (600-1)	2340-1 1/2 541 (600-1 1/2)	NA

MIRL Rwy 9-27 0
REIL Rws 9 and 27 0