

WAAS CH 45740 W32A	APP CRS 320°	Rwy Idg TDZE Apt Elev	5000 67 67
--	------------------------	-----------------------------	---------------------------------------

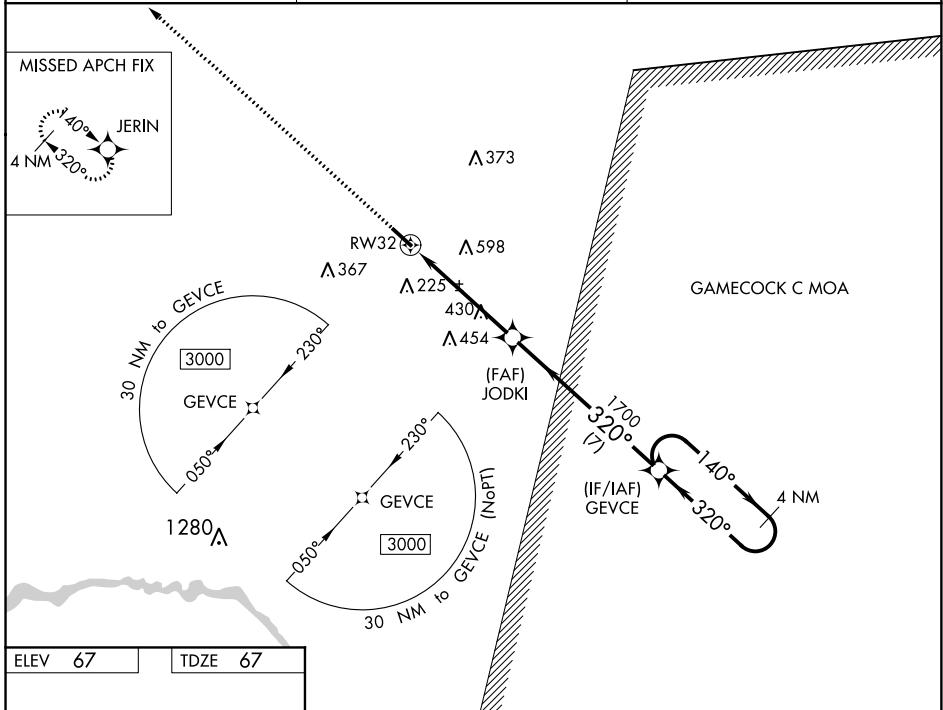
RNAV (GPS) RWY 32

WILLIAMSBURG RGNL (CKI)

⚠ For uncompensated Baro-VNAV systems, LNAV/VNAV NA below -15°C (5°F) or above 54°C (130°F). Baro-VNAV and VDP NA when using Florence Rgnl altimeter setting. Rwy 32 helicopter visibility reduction below 3/4 SM NA. DME/DME RNP-0.3 NA.

MISSED APPROACH: Climb to 3000 direct JERIN and hold.

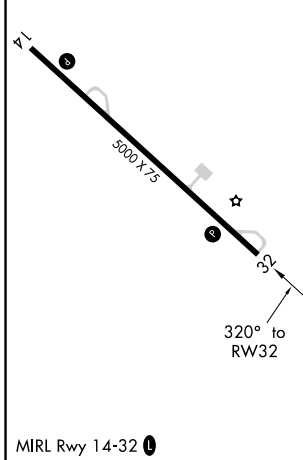
AWOS-3 124.775	MYRTLE BEACH APP CON ★ 127.4 257.95	UNICOM 122.7 (CTAF) 📻
--------------------------	---	--



SE-2, 25 FEB 2021 to 25 MAR 2021

SE-2, 25 FEB 2021 to 25 MAR 2021

ELEV 67	TDZE 67
---------	---------



3000	JERIN	GEVCE	4 NM Holding Pattern	
*LNAV only	JODKI	1700	140° → 3000	
RW32	*1.8 NM to RW32	320°	← 320°	
	1700		GP 3.00° TCH 45	
	← 1.8 NM →	← 3.2 NM →	← 7 NM →	
CATEGORY	A	B	C	D
LPV DA		317-7/8	250 (300-7/8)	
LNAV/VNAV DA		334-7/8	267 (300-7/8)	
LNAV MDA	680-1	613 (700-1)	680-1 3/4	613 (700-1 3/4)
C CIRCLING	680-1	613 (700-1)	960-2 3/4 893 (900-2 3/4)	960-3 893 (900-3)