

WAAS CH 78129 W24A	APP CRS 245°	Rwy Idg TDZE Apt Elev	4897 326 331
----------------------------------------	------------------------	-----------------------------	-----------------------------------------

RNAV (GPS) Y RWY 24

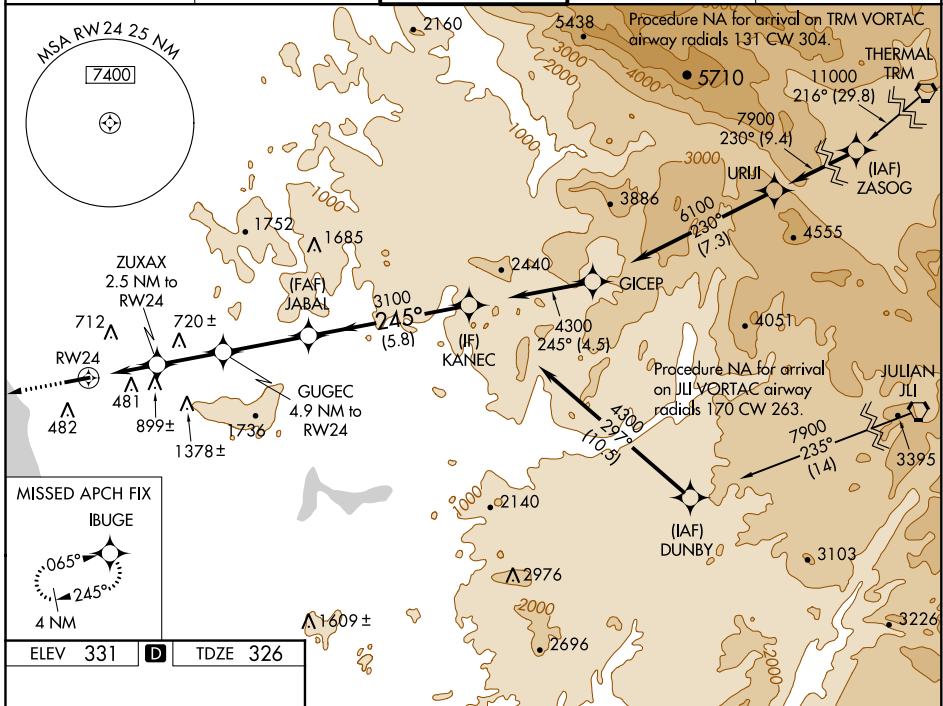
MC CLELLAN-PALOMAR (CRQ)

⚠ For uncompensated Baro-VNAV systems, LNAV/VNAV NA below -4°C (25°F) or above 54°C (130°F). DME/DME RNP-0.3 NA. Rwy 24 helicopter visibility reduction below RVR 4000 NA. For inop ALS, increase LNAV/VNAV all Cats visibility to 1½ SM, increase LNAV Cats A/B visibility to RVR 5500 Cat C to 1½ SM. Inop table does not apply to LPV.

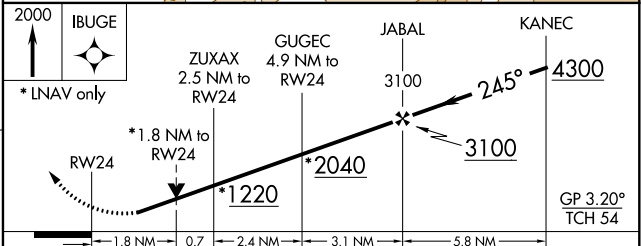
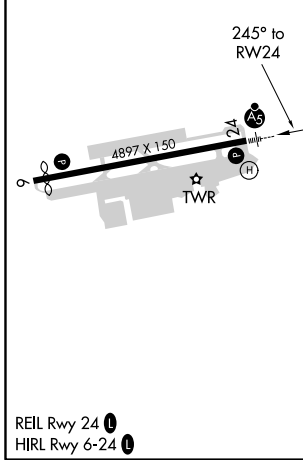


MISSED APPROACH:
Climb to 2000 direct
IBUGE and hold.

ATIS 120.15	SOCAL APP CON 127.3 323.0	PALOMAR TOWER* 118.6 (CTAF) 0 276.4	GND CON 121.8	CLNC DEL 134.85
-----------------------	-------------------------------------	------------------------------------------------------	-------------------------	---------------------------



ELEV 331	D	TDZE 326
----------	----------	----------



CATEGORY	A	B	C	D
LPV DA	528/40	202 (200-¾)	576/40 250 (300-¾)	NA
LNAV/VNAV DA	927-1½ 601 (600-1½)			NA
LNAV MDA	1000/40	674 (700-¾)	1000-1½ 674 (700-1½)	NA
C CIRCLING	1000-1 669 (700-1)	1020-1 689 (700-1)	1260-2¾ 929 (1000-2¾)	NA

SW-3, 25 FEB 2021 to 25 MAR 2021

SW-3, 25 FEB 2021 to 25 MAR 2021