

LOC/DME I-EJR 111.5 Chan 52	APP CRS 215°	Rwy Idg TDZE 632 Apt Elev 645	10001
---	------------------------	---	--------------

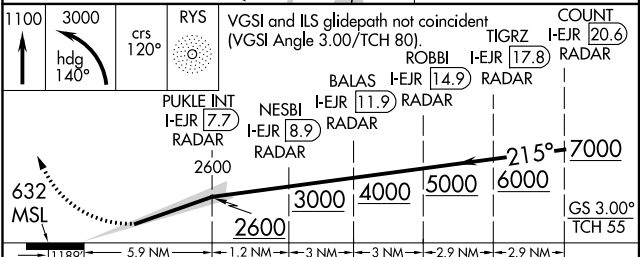
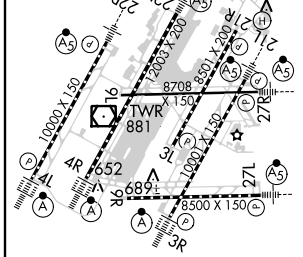
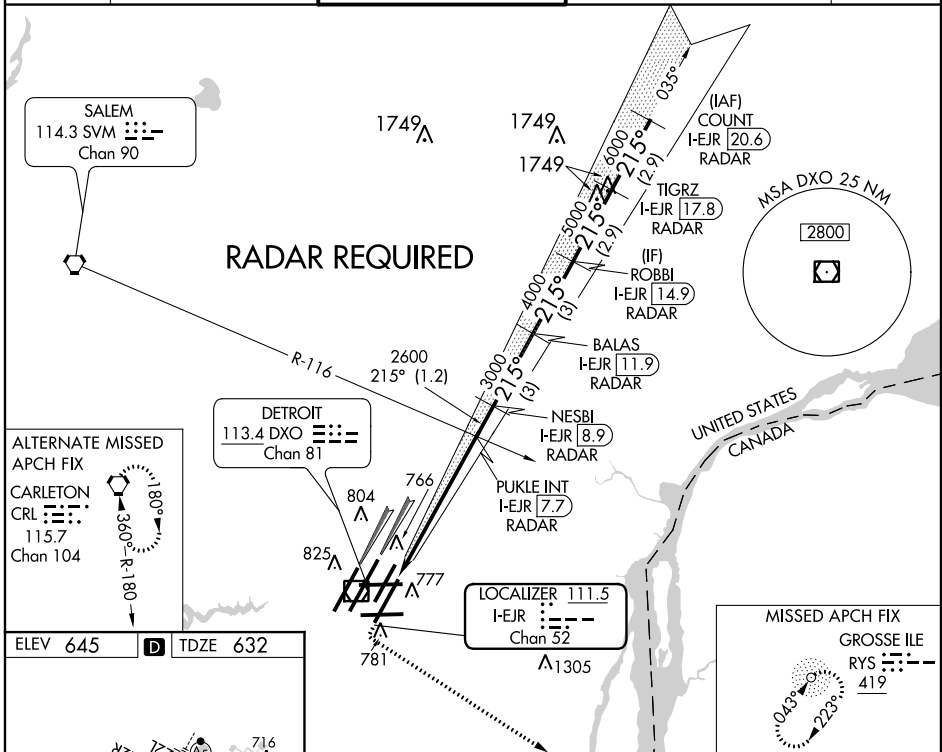
ILS RWY 21L (SA CAT I & II)

DETROIT METROPOLITAN WAYNE COUNTY (DTW)

Simultaneous approach authorized with Rwy 22L and Rwy 22R. ADF and DME or Radar required. SA CAT I: Requires specific OPSPEC, MSPEC, or LOA approval and use of HUD to DH. SA CAT II Reduced: Reduced lighting: Requires specific OPSPEC, MSPEC, or LOA approval and use of Autoland or HUD to touchdown.

MALSR MISSED APPROACH: Climb to 1100 then climbing left turn to 3000 on heading 140° and course 120° to RYS NDB and hold.

ATIS 133.675	DETROIT APP CON 124.05 363.2 (WEST) 125.15 363.2 (EAST)	METRO TOWER 135.0 317.725 (WEST) 118.4 317.725 (EAST)	GND CON 121.8 (NW) 119.45 (NE) 132.72 (SW) 119.25 (SE)	CINC DEL 120.65
------------------------	---	---	--	---------------------------



CATEGORY	A	B	C	D
S-ILS 21L	SA CAT I	RA 148/14	150 DA 782	
S-ILS 21L	SA CAT II	RA 98/12	100 DA 732	

SA CATEGORY I & II ILS SPECIAL AIRCREW & AIRCRAFT CERTIFICATION REQUIRED

EC-1, 26 JUN 2014 to 24 JUL 2014

EC-1, 26 JUN 2014 to 24 JUL 2014