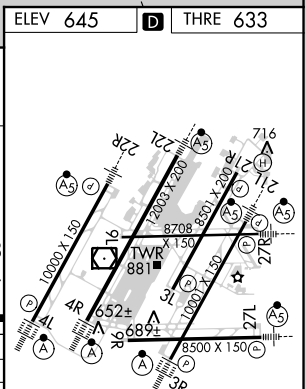
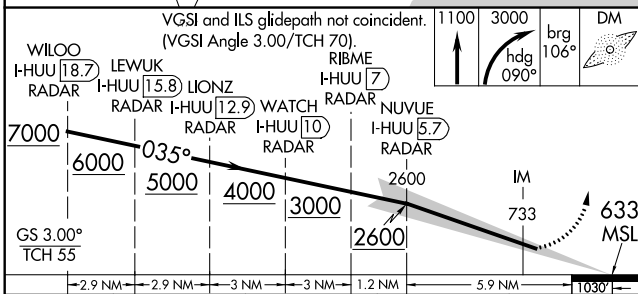
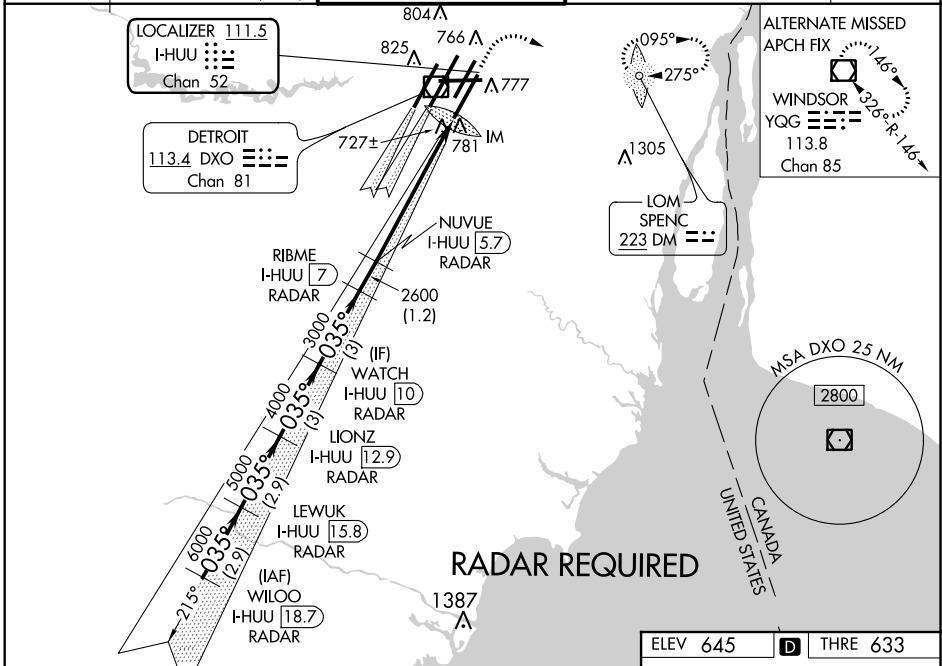


LOC/DME I-HUU <b>111.5</b> Chan 52	APP CRS <b>035°</b>	Rwy Idg <b>10001</b> THRE <b>633</b> Apt Elev <b>645</b>
--	------------------------	---

# ILS RWY 3R (CAT II & III)

DETROIT METROPOLITAN WAYNE COUNTY (DTW)

▽ Simultaneous approach authorized with Rwy 4R or Rwy 4L. ADF and DME or Radar Required.	ALSF-2 A
	MISSED APPROACH: Climb to 1100 then climbing right turn to 3000 on heading 090° and brg-106° to SPENC LOM and hold, continue climb-in-hold to 3000.



CATEGORY	A	B	C	D
S-ILS 3R	CAT II RA 101/12 100 DA 733			
S-ILS 3R	CAT IIIa RVR 07			
S-ILS 3R	CAT IIIb RVR 06			
S-ILS 3R	CAT IIIc NA			

## CATEGORY II & III ILS - SPECIAL AIRCREW & AIRCRAFT CERTIFICATION REQUIRED

TDZ/CL Rwys 4L, 4R and 3R  
REIL Rwys 3L, 9L, 9R and 21R  
HIRL all runways

EC-1, 26 JUN 2014 to 24 JUL 2014

EC-1, 26 JUN 2014 to 24 JUL 2014