


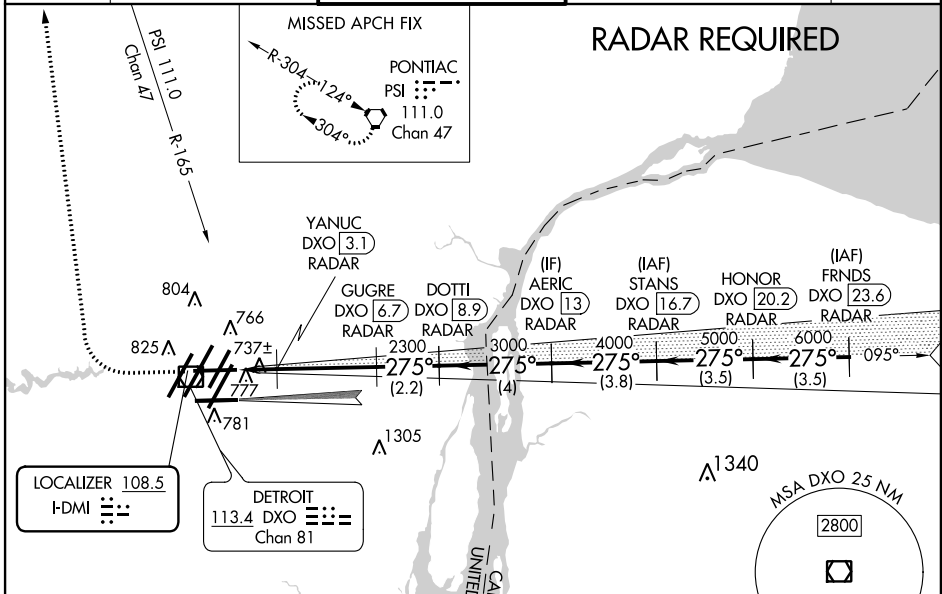
LOC I-DMI 108.5	APP CRS 275°	Rwy Idg 8708 THRE 635 Apt Elev 645
---------------------------	------------------------	--

ILS or LOC RWY 27R

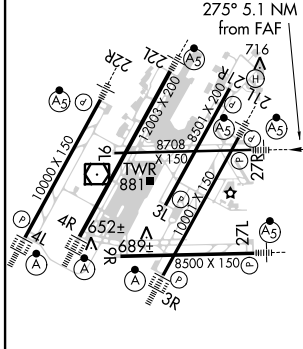
DETROIT METROPOLITAN WAYNE COUNTY (DTW)

<p>Simultaneous approach authorized with ILS or LOC Rwy 27L. DME or Radar required. For nonoperative MALSR, increase S-LOC 27R Cats C and D visibility to 1 mile. #RVR 1800 authorized with use of FD or AP or HUD to DA.</p>	<p>MALSR</p> 	<p>MISSED APPROACH: Climb to 1100 then climbing right turn to 3000 on heading 360° and PSI VORTAC R-165 to PSI VORTAC and hold.</p>
---	--	---

<p>ATIS 133.675</p>	<p>DETROIT APP CON 124.05 363.2 (WEST) 125.15 363.2 (EAST)</p>	<p>METRO TOWER 135.0 317.725 (WEST) 118.4 317.725 (EAST)</p>	<p>GND CON 121.8 (NW) 119.45 (NE) 132.72 (SW) 119.25 (SE)</p>	<p>CLNC DEL 120.65</p>
--------------------------------	--	--	---	-----------------------------------



ELEV 645	D	THRE 635
----------	---	----------



<p>↑ LOC only</p>	<p>PSI R-165</p>	<p>PSI</p>	<p>VGSI and ILS glidepath not coincident (VGSI Angle 3.00/TCH 61).</p>	<p>HONOR DXO [20.2] RADAR</p> <p>FRNDS DXO [23.6] RADAR</p>
<p>YANUC DXO [3.1] RADAR</p> <p>GUGRE DXO [6.7] RADAR</p> <p>DOTTI DXO [8.9] RADAR</p> <p>AERIC DXO [13] RADAR</p> <p>STANS DXO [16.7] RADAR</p>	<p>2300</p> <p>4000</p> <p>5000</p> <p>6000</p> <p>7000</p>	<p>275°</p>	<p>GS 3.00°</p> <p>TCH 50</p>	

<p>TDZ/CL Rwy 4L, 4R and 3R REL Rwy 3L, 9L, 9R and 21R HIRL all runways</p>					
<p>FAF to MAP 5.1 NM</p>					
Knots	60	90	120	150	180
Min:Sec	5:06	3:24	2:33	2:02	1:42

CATEGORY	A	B	C	D
S-ILS 27R	# 835/24		200 (200-½)	
S-LOC 27R	1000/24	365 (400-½)	1000/35	365 (400-¾)
CIRCLING	1200-1	555 (600-1)	1200-1½	1200-2 555 (600-2)

EC-1, 26 JUN 2014 to 24 JUL 2014

EC-1, 26 JUN 2014 to 24 JUL 2014