

| | | |
|--|------------------------|--|
| LOC/DME I-HUU 111.5 Chan 52 | APP CRS 035° | Rwy Idg THRE 633 Apt Elev 645 |
|--|------------------------|--|

ILS or LOC RWY 3R

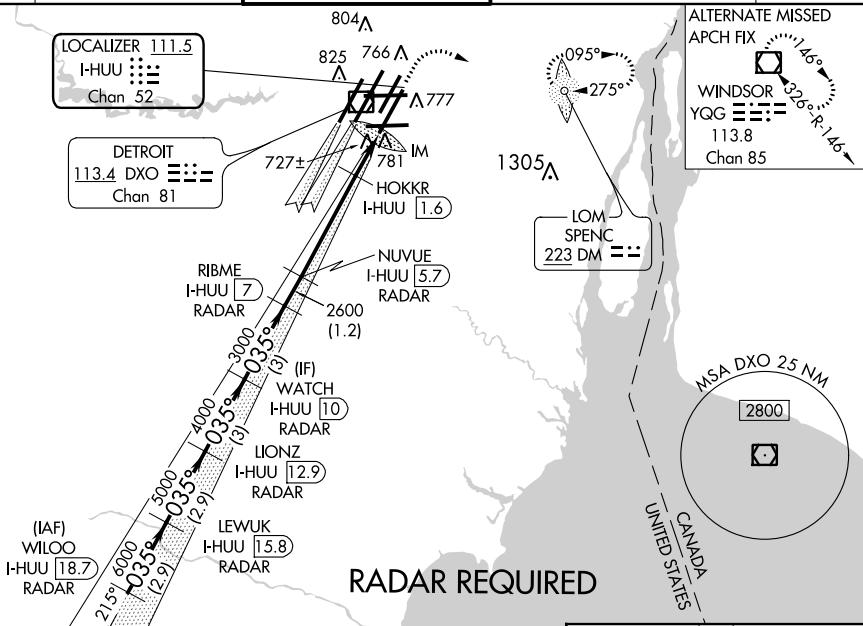
DETROIT METROPOLITAN WAYNE COUNTY (DTW)

Simultaneous approach authorized with Rwy 4R or Rwy 4L.
ADF and DME or Radar Required.



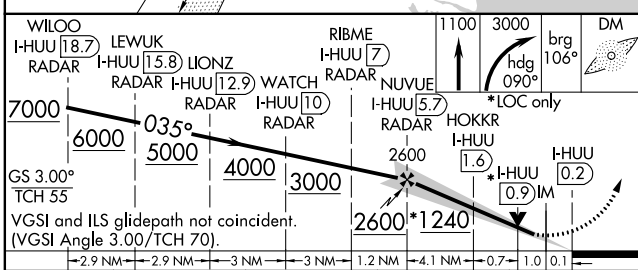
MISSAN APPROACH: Climb to 1100 then climbing right turn to 3000 on heading 090° and brg-106° to SPENC LOM and hold, continue climb-in-hold to 3000.

| | | | | |
|------------------------|---|---|--|---------------------------|
| ATIS 133.675 | DETROIT APP CON 124.05 363.2 (WEST) 125.15 363.2 (EAST) | METRO TOWER 135.0 317.725 (WEST) 118.4 317.725 (EAST) | GND CON 121.8 (NW) 119.45 (NE) 132.72 (SW) 119.25 (SE) | CLNC DEL 120.65 |
|------------------------|---|---|--|---------------------------|



EC-1, 26 JUN 2014 to 24 JUL 2014

EC-1, 26 JUN 2014 to 24 JUL 2014



| | |
|----------|-------------------|
| ELEV 645 | D THRE 633 |
|----------|-------------------|

TDZ/CL Rwy's 4L, 4R and 3R
REIL Rwy's 3L, 9L, 9R and 21R
HIRL all runways

| | | | | |
|--------------------|---------------------|----------------------|----------------------|---|
| CATEGORY | A | B | C | D |
| S-ILS 3R | 833/18 200 (200-½) | | | |
| S-LOC 3R | 1240/24 607 (600-½) | 1240/60 607 (600-1¼) | 1240-1½ 607 (600-1½) | |
| CIRCLING | 1240-1 595 (600-1) | 1240-1¾ 595 (600-1¾) | 1240-2 595 (600-2) | |
| HOKKR FIX MINIMUMS | | | | |
| S-LOC 3R | 1040/24 407 (400-½) | 1040/40 407 (400-¾) | | |
| CIRCLING | 1200-1 555 (600-1) | 1200-1½ 555 (600-1½) | 1200-2 555 (600-2) | |

