

DETROIT, MICHIGAN

AL-119 (FAA)

ILS PRM RWY 21L


(SIMULTANEOUS CLOSE PARALLEL)

DETROIT METROPOLITAN WAYNE COUNTY (DTW)

LOC/DME I-EJR 111.5 Chan 52	APP CRS 215°	Rwy Idg TDZE Apt Elev	10001 632 645
---	------------------------	-----------------------------	--

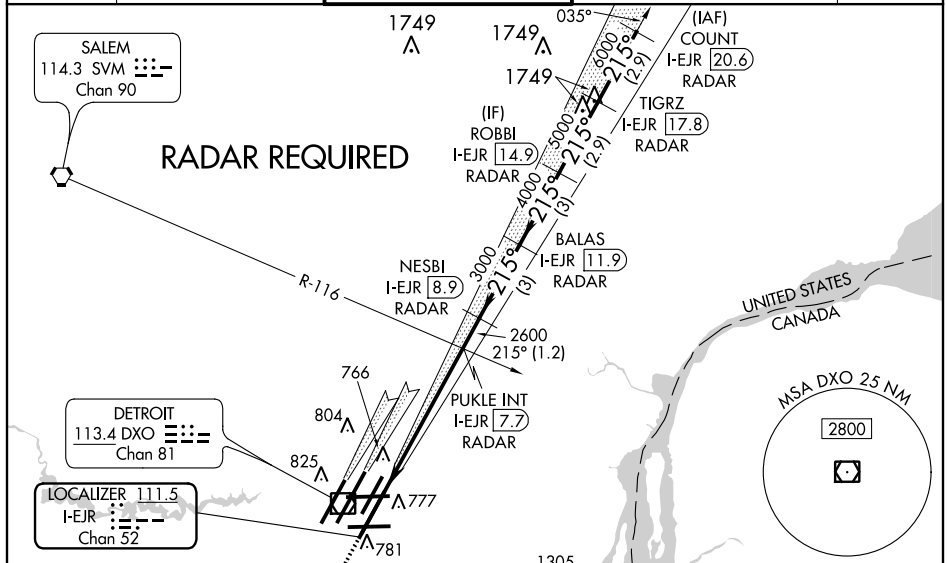
Simultaneous close parallel approach authorized with ILS PRM Rwy 22L and ILS PRM Rwy 22R.
Procedure NA when glideslope not available. ADF and Radar or DME Required. Dual VHF Comm Required.
See additional requirements on AAUP.
* RVR 1800 authorized with use of FD or AP or HUD to DA.

MALSR



MISSED APPROACH: Climb to 1100 then climbing left turn to 3000 on heading 140° and course 120° RYS NDB and hold.

ATIS 133.675	DETROIT APP CON 124.05 363.2 (WEST) 125.15 363.2 (EAST)	METRO TOWER 118.4 317.25 PRM 128.35	GND CON 121.8 (NW) 119.45 (NE) 132.72 (SW) 119.25 (SE)	CLNC DEL 120.65
------------------------	---	---	--	---------------------------



ELEV 645 TDZE 632

1100 3000

hdg 140°

crs 120°

RYS VGSI and ILS glidepath not coincident (VGSI Angle 3.00/TCH 80).

TIGRZ I-EJR 17.8

COUNT I-EJR 20.6

ROBB I-EJR 14.9

BALAS I-EJR 11.9

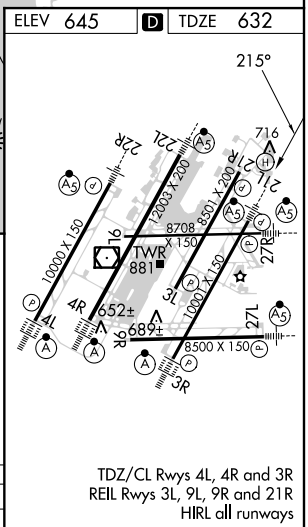
PUKLE INT I-EJR 8.9

NESBI I-EJR 8.9

2600 3000 4000 5000 6000

GS 3.00° TCH 55

5.9 NM 1.2 NM 3 NM 3 NM 2.9 NM 2.9 NM



TDZ/CL Rws 4L, 4R and 3R
REIL Rws 3L, 9L, 9R and 21R
HIRL all runways

EC-1, 26 JUN 2014 to 24 JUL 2014

EC-1, 26 JUN 2014 to 24 JUL 2014

DETROIT, MICHIGAN
Orig-D 27JUN13

42°13'N-83°21'W

DETROIT METROPOLITAN WAYNE COUNTY (DTW)

ILS PRM RWY 21L (SIMULTANEOUS CLOSE PARALLEL)