

ILS PRM RWY 3R (SIMULTANEOUS CLOSE PARALLEL)

DETROIT METROPOLITAN WAYNE COUNTY (DTW)

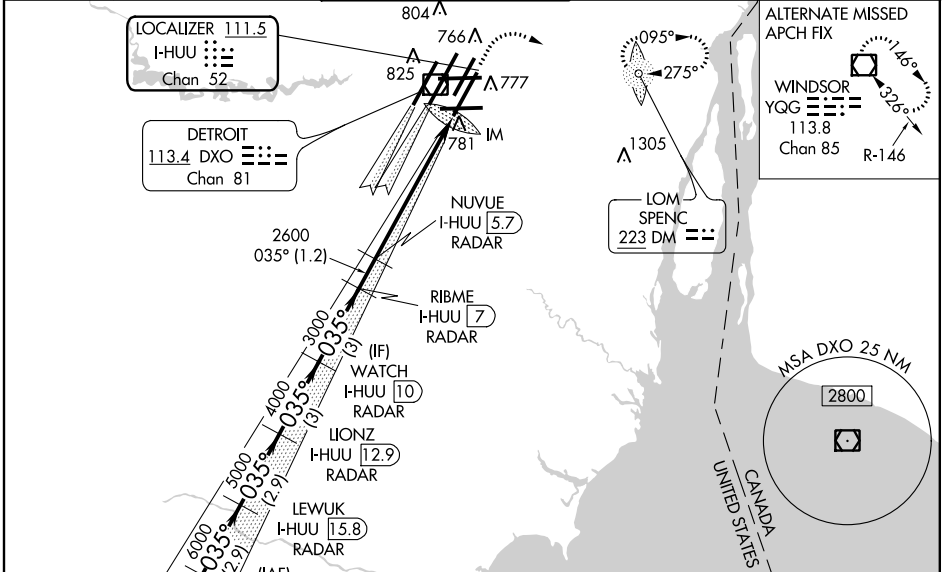
| | | |
|---|------------------------|-------------------------|
| LOC/DME I-HUU 111.5 Chan 52 | APP CRS 035° | Rwy Idg 10001 |
| | | THRE 633 |
| | | Apt Elev 645 |

Simultaneous close parallel approach authorized with ILS PRM Rwy 4R, ILS PRM Rwy 4R (Cat II), ILS PRM Rwy 4R (Cat III) and ILS PRM Rwy 4L. Procedure NA when glideslope not available. Dual VHF comm required. ADF and DME or Radar Required. See additional requirements on AAUP.

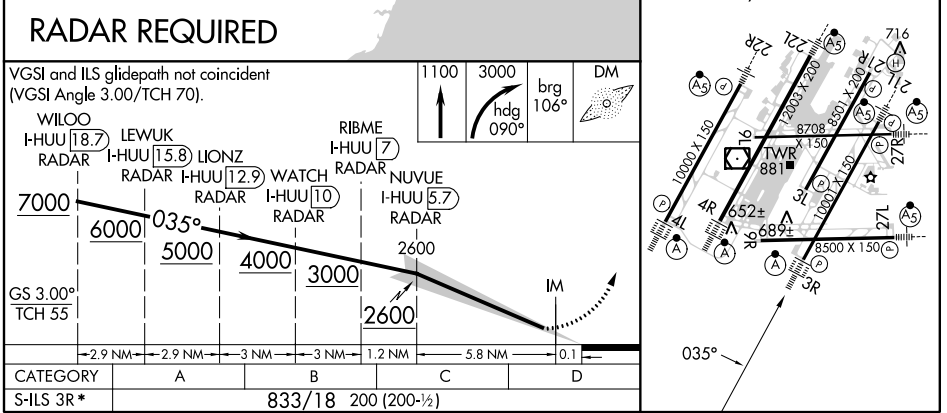
ALSF-2

MISSED APPROACH: Climb to 1100 then climbing right turn to 3000 on heading 090° and brg-106° to SPENC LOM and hold, continue climb-in-hold to 3000.

| | | | | |
|------------------------|---|--|--|---------------------------|
| ATIS 133.675 | DETROIT APP CON 124.05 363.2 (WEST) 125.15 363.2 (EAST) | METRO TOWER 118.4 317.725 PRM 128.35 | GND CON 121.8 (NW) 119.45 (NE) 132.72 (SW) 119.25 (SE) | CINC DEL 120.65 |
|------------------------|---|--|--|---------------------------|



| | | |
|---|----------|----------|
| ELEV 645 | D | THRE 633 |
| TDZ/CL Rwws 4L, 4R and 3R REIL Rwws 3L, 9L, 9R and 21R HIRL all runways | | |



| | | | | |
|-----------|----------------------|---|---|---|
| CATEGORY | A | B | C | D |
| S-ILS 3R* | 833/18 200 (200-1/2) | | | |

DETROIT, MICHIGAN 42°13'N-83°21'W DETROIT METROPOLITAN WAYNE COUNTY (DTW)
 Orig-C 27JUN13 **ILS PRM RWY 3R (SIMULTANEOUS CLOSE PARALLEL)**

EC-1, 26 JUN 2014 to 24 JUL 2014

EC-1, 26 JUN 2014 to 24 JUL 2014