

LOC/DME I-BZB 111.75 Chan 54 (Y)	APP CRS 212°	Rwy Idg THRE 642 Apt Elev 645	10000
--	------------------------	---	--------------

ILS Y RWY 22R

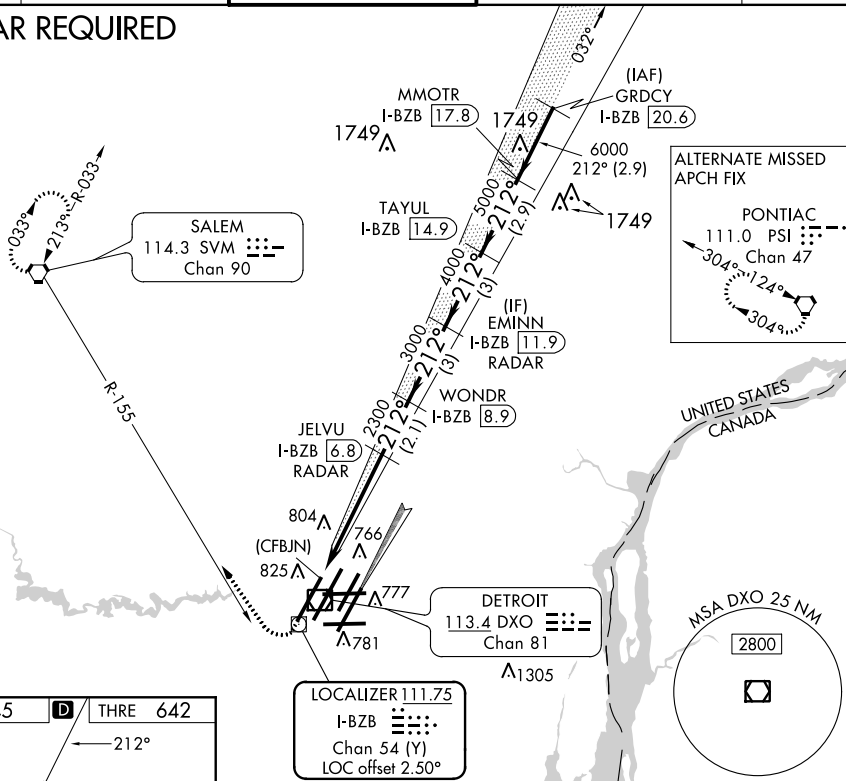
DETROIT METROPOLITAN WAYNE COUNTY (DTW)

ATIS 133.675	DETROIT APP CON 124.05 363.2 (WEST) 125.15 363.2 (EAST)	METRO TOWER 135.0 317.725 (WEST) 118.4 317.725 (EAST)	GND CON 121.8 (NW) 119.45 (NE) 132.72 (SW) 119.25 (SE)	CINC DEL 120.65
	Simultaneous approach authorized with Rwy 21L. DME or Radar required. Procedure NA when glideslope not available.			



MISSED APPROACH: Climb to 1100 then climbing right turn to 3000 on heading 331° and SVM VORTAC R-155 direct SVM VORTAC and hold.

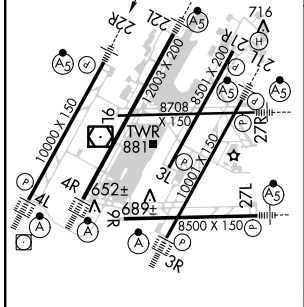
RADAR REQUIRED



EC-1, 26 JUN 2014 to 24 JUL 2014

EC-1, 26 JUN 2014 to 24 JUL 2014

ELEV 645	D	THRE 642
← 212°		



TDZ/CL Rwy's 4L, 4R and 3R
REIL Rwy's 3L, 9L, 9R and 21R
HIRL all runways

1100	3000	SVM	SVM	VGSI and ILS glidepath not coincident (VGSI Angle 3.00/TCH 71).	GRDCY
↑	hdg 331°	R-155			MMOTR I-BZB 20.6
TAYUL I-BZB 17.8					
WONDRA I-BZB 8.9					
JELVU I-BZB 6.8					
(CFBJN) 2300					
3000 4000 5000 6000 7000					
GS 3.00° TCH 55					
5 NM 2.1 NM 3 NM 3 NM 2.9 NM 2.9 NM					
CATEGORY	A	B	C	D	
S-ILS 22R	892/24		250 (300-1/2)		