

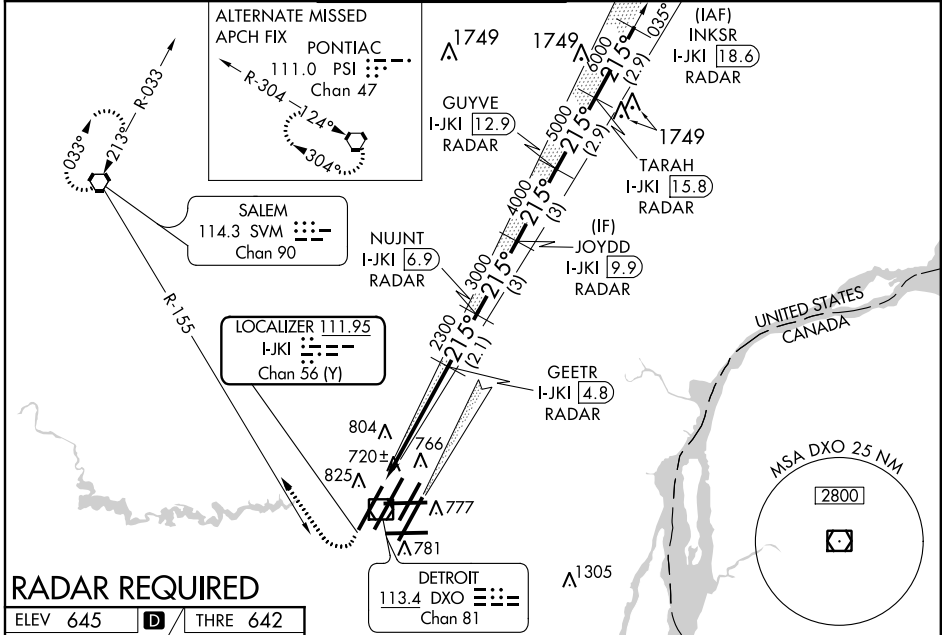
| | | |
|--|------------------------|--|
| LOC/DME I-JKI 111.95 Chan 56 (Y) | APP CRS 215° | Rwy Ldg THRE Apt Elev 10,000 642 645 |
|--|------------------------|--|

ILS Z or LOC RWY 22R

DETROIT METROPOLITAN WAYNE COUNTY (DTW)

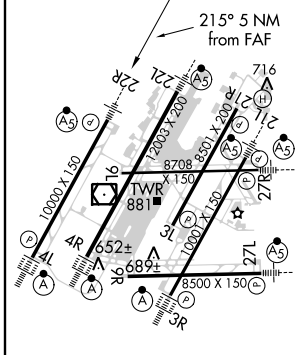
| | | |
|--|-----------|--|
| # RVR 1800 authorized with the use of FD or AP or HUD to DA. Simultaneous approach authorized with Rwy 21L. DME or Radar Required. | MALSR | MISSED APPROACH: Climb to 1100 then climbing right turn to 3000 on heading 331° and SVM VORTAC R-155 direct SVM VORTAC and hold. |
| | | |

| | | | | |
|------------------------|---|---|--|---------------------------|
| ATIS 133.675 | DETROIT APP CON 124.05 363.2 (WEST) 125.15 363.2 (EAST) | METRO TOWER 135.0 317.725 (WEST) 118.4 317.725 (EAST) | GND CON 121.8 (NW) 119.45 (NE) 132.72 (SW) 119.25 (SE) | CLNC DEL 120.65 |
|------------------------|---|---|--|---------------------------|



RADAR REQUIRED

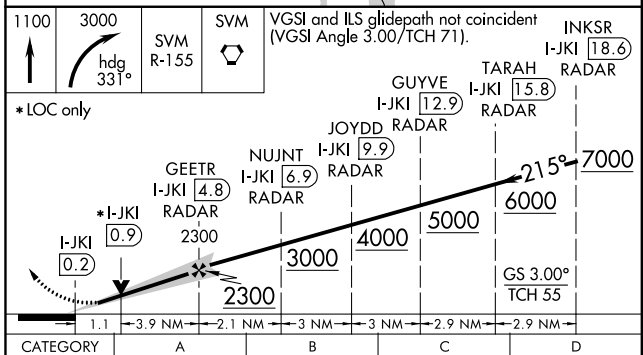
| | | |
|----------|----------|----------|
| ELEV 645 | D | THRE 642 |
|----------|----------|----------|



TDZ/CL Rwy 4L, 4R and 3R
REL Rwy 3L, 9L, 9R and 21R
HIRL all runways

FAF to MAP 5 NM

| | | | | | |
|---------|------|------|------|------|------|
| Knots | 60 | 90 | 120 | 150 | 180 |
| Min:Sec | 5:00 | 3:20 | 2:30 | 2:00 | 1:40 |



| | | | | |
|-----------|---------------------|-------------|-------------|-------------|
| CATEGORY | A | B | C | D |
| S-ILS 22R | #842/24 200 (200-½) | | | |
| S-LOC 22R | 1060/24 | 418 (500-½) | 1060/40 | 418 (500-¾) |
| CIRCLING | 1200-1 | 555 (600-1) | 1200-1½ | 1200-2 |
| | | | 555 (600-½) | 555 (600-2) |

EC-1, 26 JUN 2014 to 24 JUL 2014

EC-1, 26 JUN 2014 to 24 JUL 2014