

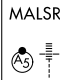
WAAS CH <b>81820</b>	APP CRS <b>215°</b>	Rwy Idg THRE <b>10001</b> <b>632</b>
<b>W21A</b>		Apt Elev <b>645</b>

# RNAV (GPS) RWY 21L

DETROIT METROPOLITAN WAYNE COUNTY (DTW)

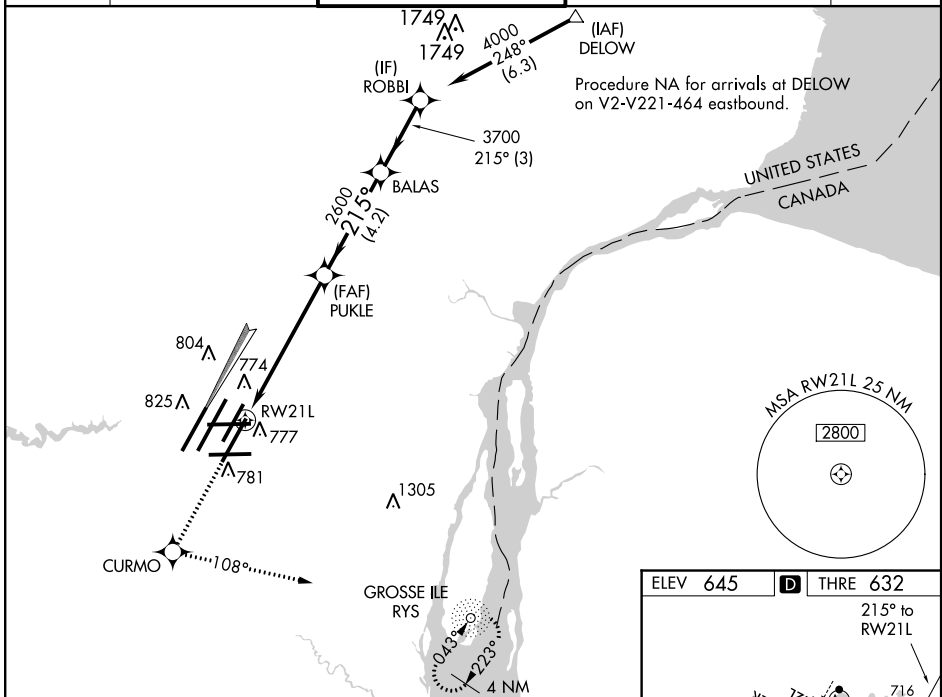
▼ For uncompensated Baro-VNAV systems, LNAV/VNAV NA below -16°C (4°F) or above 47°C (116°F). DME/DME RNP-0.3 NA. For inoperative MALS/R increase LPV all Cats visibility to RVR 4500, LNAV/VNAV all Cats visibility to 1 3/8 miles, LNAV Cats A and B visibility to RVR 5500 and LNAV Cats C and D visibility to 1 3/8 miles. Simultaneous approach authorized with ILS Y Rwy 22R and ILS Z or LOC Rwy 22R. LNAV procedure NA during simultaneous operations. Use of FD or AP providing RNAV track guidance required during simultaneous operations.



MALS/R



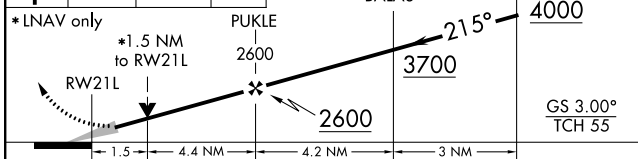
MISSED APPROACH: Climb to 3000 direct CURMO and left turn on track 108° to RYS NDB and hold.

ATIS <b>133.675</b>	DETROIT APP CON <b>124.05 363.2 (WEST)</b> <b>125.15 363.2 (EAST)</b>	METRO TOWER <b>135.0 317.725 (WEST)</b> <b>118.4 317.725 (EAST)</b>	GND CON <b>121.8 (NW) 119.45 (NE)</b> <b>132.72 (SW) 119.25 (SE)</b>	CLNC DEL <b>120.65</b>
------------------------	---	---	--	---------------------------



3000 CURMO  RYS  VGSI and RNAV glidepath not coincident (VGSI Angle 3.00/TCH 80).

tr 108°



CATEGORY	A	B	C	D
LPV DA		922/24	290 (300-1/2)	
LNAV/VNAV DA		1118/50	486 (500-1)	
LNAV MDA	1180/24	548 (600-1/2)	1180/60	548 (600-1 1/4)
CIRCLING	1200-1	555 (600-1)	1200-1 1/2	1200-2
			555 (600-1 1/2)	555 (600-2)

ELEV 645 **D** THRE 632

215° to RWY 21L

TDZ/CL Rwy 4L, 4R and 3R  
REIL Rwy 3L, 9L, 9R and 21R  
HIRL all runways

EC-1, 26 JUN 2014 to 24 JUL 2014

EC-1, 26 JUN 2014 to 24 JUL 2014