

WAAS CH 99601 W22A	APP CRS 215°	Rwy Idg 12003 TDZE 637 Apt Elev 645
--	------------------------	--

RNAV (GPS) RWY 22L

DETROIT METROPOLITAN WAYNE COUNTY (DTW)

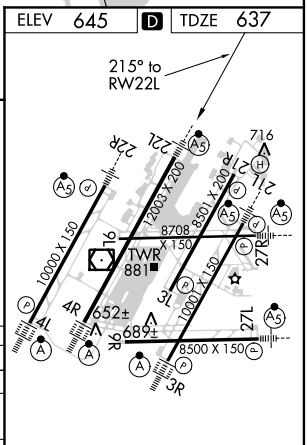
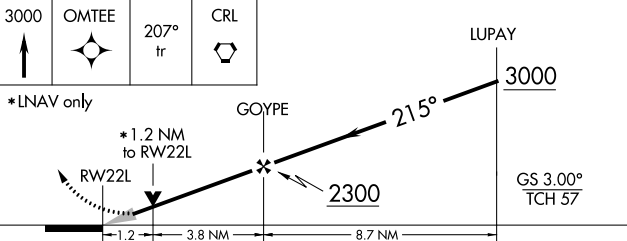
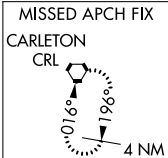
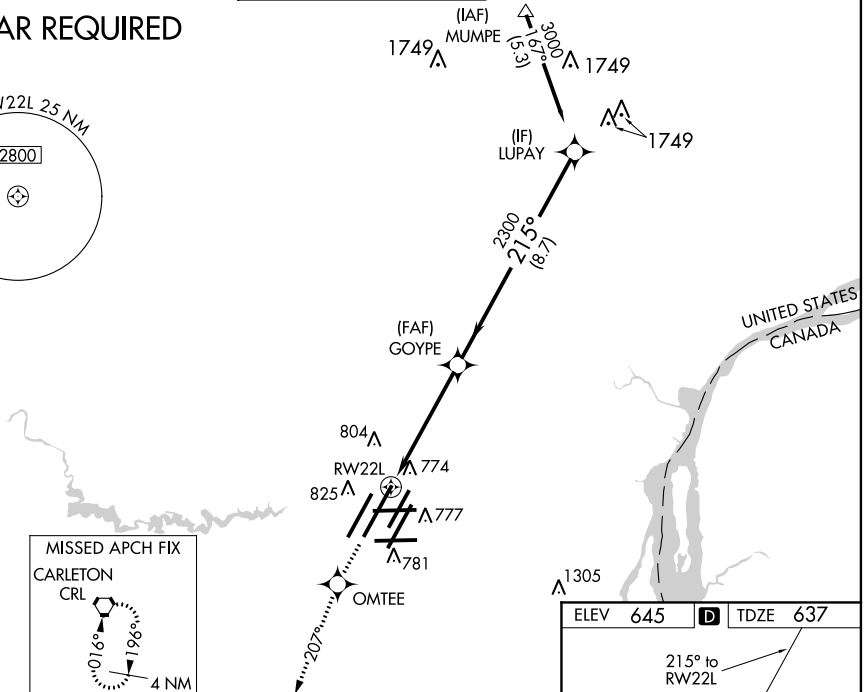
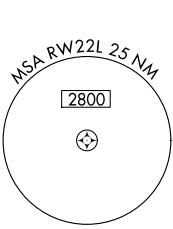
▼ For inoperative MALSR, increase LPV all Cats visibility to RVR 5000. For uncompensated Baro-VNAV systems, LNAV/VNAV NA below -16°C (4°F) or above 47°C (116°F). DME/DME RNP-0.3 NA. Simultaneous approach authorized with ILS or LOC Rwy 21L. LNAV procedure NA during simultaneous operations. Use of FD or AP providing RNAV track guidance required during simultaneous operations.



MISSED APPROACH:
Climb to 3000 direct OMTEE and via 207° track to CRL VORTAC and hold.

ATIS 133.675	DETROIT APP CON 124.05 363.2 (WEST) 125.15 363.2 (EAST)	METRO TOWER 135.0 317.25 (WEST) 118.4 317.25 (EAST)	GND CON 121.8 (NW) 119.45 (NE) 132.72 (SW) 119.25 (SE)	CLNC DEL 120.65
------------------------	---	---	--	---------------------------

RADAR REQUIRED



CATEGORY	A	B	C	D
LPV DA	932/24		295 (300-½)	
LNAV/VNAV DA	1117/60		480 (500-1¼)	
LNAV MDA	1080/24	443 (500-½)	1080/40 443 (500-¾)	1080/50 443 (500-1)
CIRCLING	1200-1	555 (600-1)	1200-1½ 555 (600-1½)	1200-2 555 (600-2)

TDZ/CL Rwys 4L, 4R and 3R
REIL Rwys 3L, 9L, 9R and 21R
HIRL all runways

EC-1, 26 JUN 2014 to 24 JUL 2014

EC-1, 26 JUN 2014 to 24 JUL 2014