

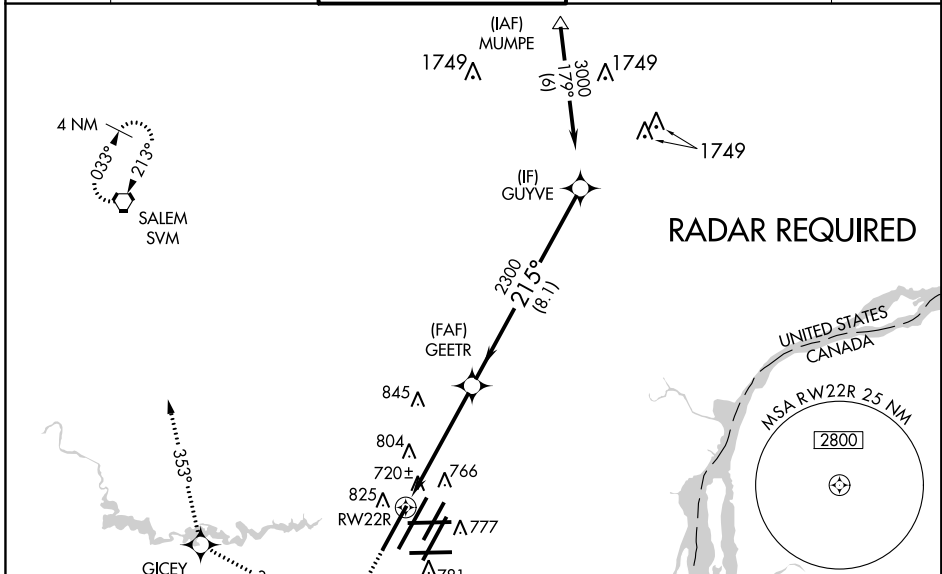
WAAS CH <b>82001</b> <b>W22B</b>	APP CRS <b>215°</b>	Rwy Idg <b>10000</b> TDZE <b>642</b> Apt Elev <b>645</b>
--	------------------------	--

# RNAV (GPS) RWY 22R

DETROIT METROPOLITAN WAYNE COUNTY (DTW)

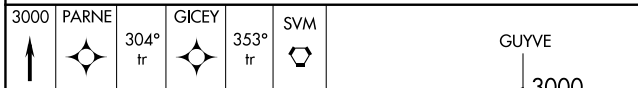
<p>▼ For inoperative MALS, increase LPV all Cats visibility to RVR 5000. For uncompensated Baro-VNAV systems, LNAV/VNAV NA below -16°C (4°F) or above 47°C (116°F). DME/DME RNP-0.3 NA. Simultaneous approach authorized with ILS or LOC Rwy 21L. LNAV procedure NA during simultaneous operations. Use of FD or AP providing RNAV track guidance required during simultaneous operations.</p>	<p>MALS</p>	<p>MISSED APPROACH: Climb to 3000 direct PARNE and via 304° track to GICEY and via 353° track to SVM VORTAC and hold.</p>
	<p>AS</p>	

<p>ATIS <b>133.675</b></p>	<p>DETROIT APP CON <b>124.05 363.2</b> (WEST) <b>125.15 363.2</b> (EAST)</p>	<p>METRO TOWER <b>135.0 317.725</b> (WEST) <b>118.4 317.725</b> (EAST)</p>	<p>GND CON <b>121.8</b> (NW) <b>119.45</b> (NE) <b>132.72</b> (SW) <b>119.25</b> (SE)</p>	<p>CLNC DEL <b>120.65</b></p>
--------------------------------	--	--	---	-----------------------------------



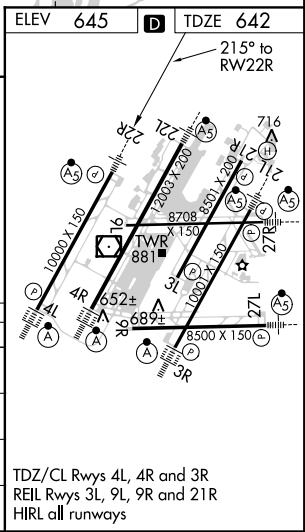
**RADAR REQUIRED**

ELEV 645	TDZE 642
----------	----------



3000	PARNE	GICEY	SVM	GUYVE
	304° tr	353° tr		
*LNAV only				
	RW22R	GEETR		3000
	1.5 NM	3.5 NM	8.1 NM	
				GS 3.00° TCH 55

CATEGORY	A	B	C	D
LPV DA		892/24	250 (300-1/2)	
LNAV/VNAV DA		1006/40	364 (400-3/4)	
LNAV MDA	1160/24	518 (600-1/2)	1160/50 518 (600-1)	1160/60 518 (600-1 1/4)
CIRCLING	1200-1	555 (600-1)	1200-1 1/2 555 (600-1 1/2)	1200-2 555 (600-2)



EC-1, 26 JUN 2014 to 24 JUL 2014

EC-1, 26 JUN 2014 to 24 JUL 2014