

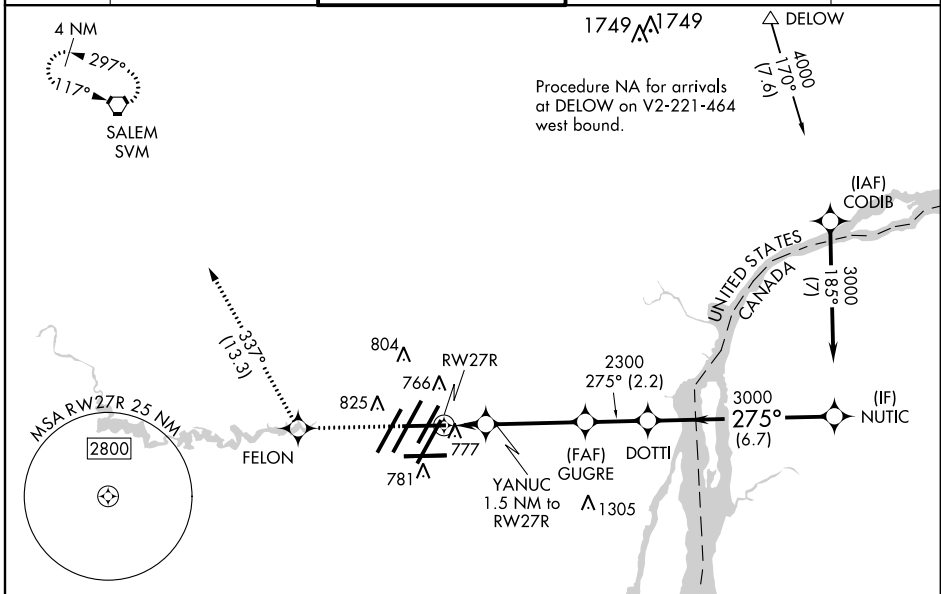
WAAS CH 86220 W27A	APP CRS 275°	Rwy Idg 8708 THRE 635 Apt Elev 645
--	------------------------	--

RNAV (GPS) RWY 27R

DETROIT METROPOLITAN WAYNE COUNTY (DTW)

<p>V For uncompensated Baro-VNAV systems, LNAV/VNAV NA below -16°C (4°F) or above 39°C (102°F). DME/DME RNP-0.3 NA. For inoperative MALSR, increase LNAV Cat C and D visibility to 1½ mile. Simultaneous approach authorized with ILS or LOC Rwy 27L. LNAV procedure NA during simultaneous operations. Use of FD or AP providing RNAV track guidance required during simultaneous operations.</p>	<p>MALSR</p>	<p>MISSED APPROACH: Climb to 3000 direct FELON and on track 337° to SVM VORTAC and hold.</p>
---	--------------	--

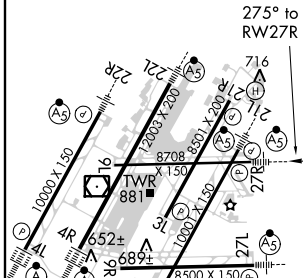
ATIS 133.675	DETROIT APP CON 124.05 363.2 (WEST) 125.15 363.2 (EAST)	METRO TOWER 135.0 317.725 (WEST) 118.4 317.725 (EAST)	GND CON 121.8 (NW) 119.45 (NE) 132.72 (SW) 119.25 (SE)	CLNC DEL 120.65
------------------------	---	---	--	---------------------------



EC-1, 26 JUN 2014 to 24 JUL 2014

EC-1, 26 JUN 2014 to 24 JUL 2014

ELEV 645	D	THRE 635
-----------------	----------	-----------------



3000	FELON	SVM	VGSI and RNAV glidepath not coincident (VGSI Angle 3.00/TCH 61).	
	↑	tr 337°	DOTTI	NUTIC
*LNAV only				
	YANUC 1.5 NM to RW27R	GUGRE	DOTTI	NUTIC
	RW27R	2300	3000	3000
	1.5	3.6 NM	2.2 NM	6.7 NM
		1160	2300	GS 3.00° TCH 50

CATEGORY	A	B	C	D
LPV DA		835/24	200 (200-½)	
LNAV/VNAV DA		938/24	303 (300-½)	
LNAV MDA	1040/24	405 (400-½)	1040/40	405 (400-¾)
CIRCLING	1200-1	555 (600-1)	1200-1½ 555 (600-1½)	1200-2 555 (600-2)

TDZ/CL Rws 4L, 4R and 3R
REIL Rws 3L, 9L, 9R and 21R
HIRL all runways