


WAAS CH 61304 W03A	APP CRS 035°	Rwy Idg 10001 TDZE 633 Apt Elev 645
--	------------------------	--

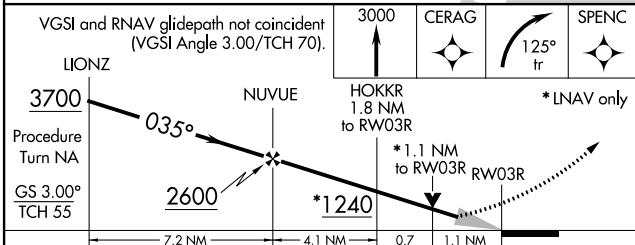
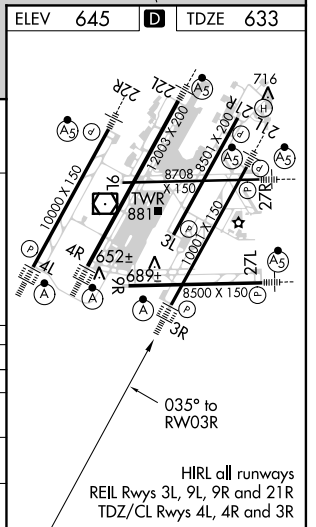
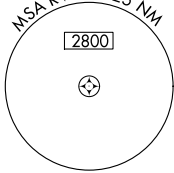
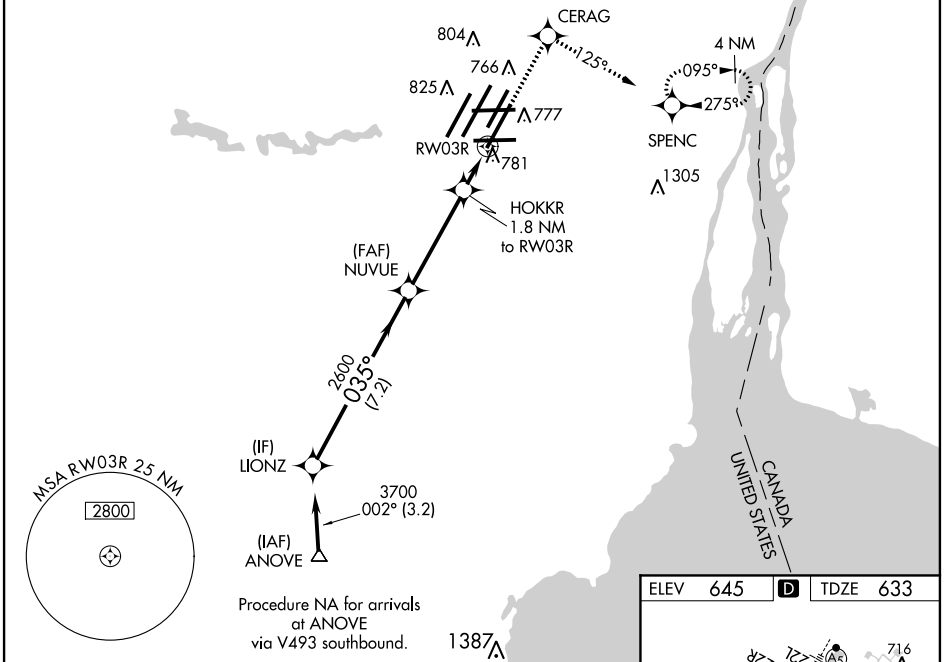
RNAV (GPS) RWY 3R

DETROIT METROPOLITAN WAYNE COUNTY (DTW)

▽ For inoperative ALSF-2, increase LPV all Cats visibility to RVR 5000. For uncompensated Baro-VNAV systems, LNAV/VNAV NA below -16°C (4°F) or above 47°C (116°F). DME /DME RNP-0.3 NA. Simultaneous approach authorized with ILS Y Rwy 4L, ILS Z or LOC Rwy 4L, ILS Z Rwy 4L (CAT II), ILS Z Rwy 4L (CAT III). LNAV procedure NA during simultaneous operations. Use of FD or AP providing RNAV track guidance required during simultaneous operations.

ALSF-2

MISSED APPROACH:
 Climb to 3000 direct CERAG and right turn via 125° track to SPENC and hold, continue climb-in-hold to 3000.

ATIS 133.675	DETROIT APP CON 124.05 363.2 (WEST) 125.15 363.2 (EAST)	METRO TOWER 135.0 317.725 (WEST) 118.4 317.725 (EAST)	GND CON 121.8 (NW) 119.45 (NE) 132.72 (SW) 119.25 (SE)	CLNC DEL 120.65
------------------------	---	---	--	---------------------------



CATEGORY	A	B	C	D
LPV DA	957/24 324 (400-½)			
LNAV/VNAV DA	1031/40 398 (400-¾)			
LNAV MDA	1060/24 427 (500-½)	1060/40 427 (500-¾)	1060/50 427 (500-1)	
CIRCLING	1200-1 555 (600-1)	1200-1½ 555 (600-1½)	1200-2 555 (600-2)	

EC-1, 26 JUN 2014 to 24 JUL 2014

EC-1, 26 JUN 2014 to 24 JUL 2014