

WAAS CH <b>77520</b> <b>W04A</b>	APP CRS <b>035°</b>	Rwy ldg <b>10000</b> TDZE <b>645</b> Apt Elev <b>645</b>
--	------------------------	--

# RNAV (GPS) RWY 4L

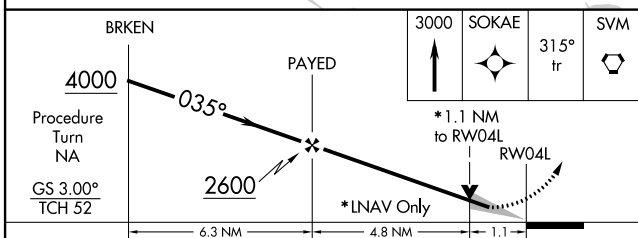
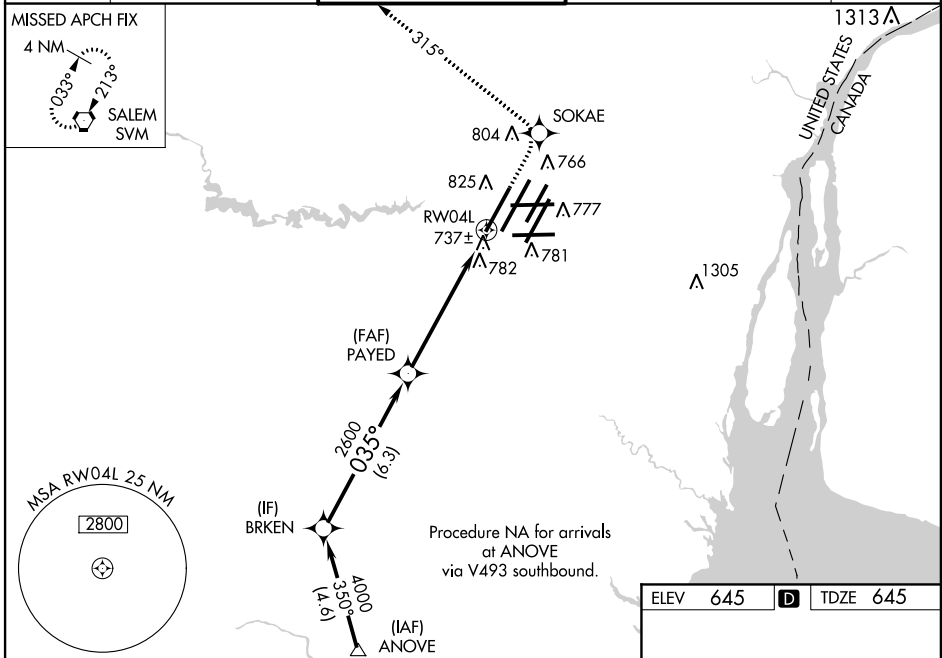
DETROIT METROPOLITAN WAYNE COUNTY (DTW)

**▽** For inoperative ALSF-2, increase LPV all Cats visibility to RVR 5000, increase LNAV Cat D visibility to RVR 6000. For uncompensated Baro-VNAV systems, LNAV/VNAV NA below -16°C (4°F) or above 47°C (116°F). DME/DME RNP-0.3 NA. Simultaneous approach authorized with ILS or LOC Rwy 3R, ILS Rwy 3R (Cat II), ILS Rwy 3R (Cat III). LNAV procedure NA during simultaneous operations. Use of FD or AP providing RNAV track guidance required during simultaneous operations.

**ALSF-2**

**MISSED APPROACH:**  
Climb to 3000 direct SOKAE and via 315° track to SVM  
VORTAC and hold.

<b>ATIS</b> <b>133.675</b>	<b>DETROIT APP CON</b> <b>124.05 363.2 (WEST)</b> <b>125.15 363.2 (EAST)</b>	<b>METRO TOWER</b> <b>135.0 317.725 (WEST)</b> <b>118.4 317.725 (EAST)</b>	<b>GND CON</b> <b>121.8 (NW)</b> <b>132.72 (SW)</b>	<b>119.45 (NE)</b> <b>119.25 (SE)</b>	<b>CLNC DEL</b> <b>120.65</b>
-------------------------------	--	--	---	--	----------------------------------



CATEGORY	A	B	C	D
LPV DA	916/24 271 (300-½)			
LNAV/VNAV DA	1008/40 363 (400-¾)			
LNAV MDA	1040/24 395 (400-½)		1040/50 395 (400-1)	
CIRCLING	1200-1 555 (600-1)	1200-1½ 555 (600-½)		1200-2 555 (600-2)

ELEV 645	<b>D</b>	TDZE 645
----------	----------	----------

TDZ/CL Rwy 4L, 4R and 3R  
REIL Rwy 3L, 9L, 9R and 21R  
HIRL all runways

EC-1, 26 JUN 2014 to 24 JUL 2014

EC-1, 26 JUN 2014 to 24 JUL 2014