

WAAS CH 63004 W04B	APP CRS 035°	Rwy Idg 12003 TDZE 638 Apt Elev 645
--	------------------------	--

RNAV (GPS) RWY 4R

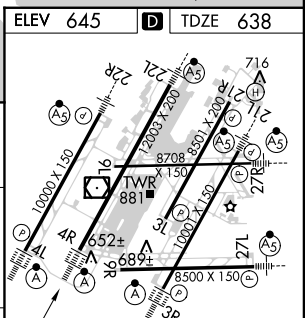
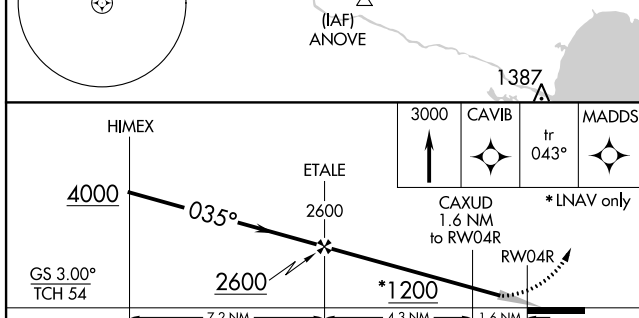
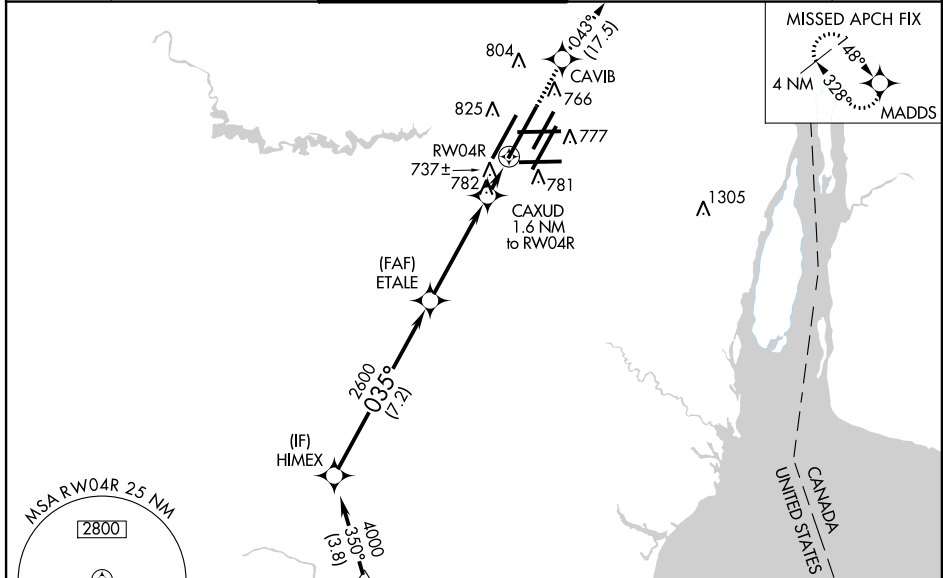
DETROIT METROPOLITAN WAYNE COUNTY (DTW)

▽ DME/DME RNP-0.3 NA. For inop ALSF-2, increase LPV all Cats visibility to RVR 5000, increase LNAV Cat D visibility to RVR 6000. For uncompensated Baro-VNAV systems, LNAV/VNAV NA below -16°C (4°F) or above 54°C (130°F). Simultaneous approach authorized with ILS or LOC Rwy 3R, ILS Rwy 3R (Cat II), ILS Rwy 3R (Cat III). LNAV procedure NA during simultaneous operations. Use of FD or AP providing RNAV track guidance required during simultaneous operations.

ALSF-2

MISSED APPROACH: Climb to 3000 direct CAVIB and on track 043° to MADDS and hold.

ATIS 133.675	DETROIT APP CON 124.05 363.2 (WEST) 125.15 363.2 (EAST)	METRO TOWER 135.0 317.725 (WEST) 118.4 317.725 (EAST)	GND CON 121.8 (NW) 119.45 (NE) 132.72 (SW) 119.25 (SE)	CINC DEL 120.65
------------------------	---	---	--	---------------------------



CATEGORY	A	B	C	D
LPV DA		964/24	326 (400-½)	
LNAV/VNAV DA		1015/40	377 (400-¾)	
LNAV MDA	1060/24	422 (500-½)	1060/40 422 (500-¾)	1060/50 422 (500-1)
CIRCLING	1200-1	555 (600-1)	1200-1½ 555 (600-1½)	1200-2 555 (600-2)

035° to RWY 4R

TDZ/CL Rws 4L, 4R and 3R
REIL Rws 3L, 9L, 9R and 21R
HIRL all runways

EC-1, 26 JUN 2014 to 24 JUL 2014

EC-1, 26 JUN 2014 to 24 JUL 2014