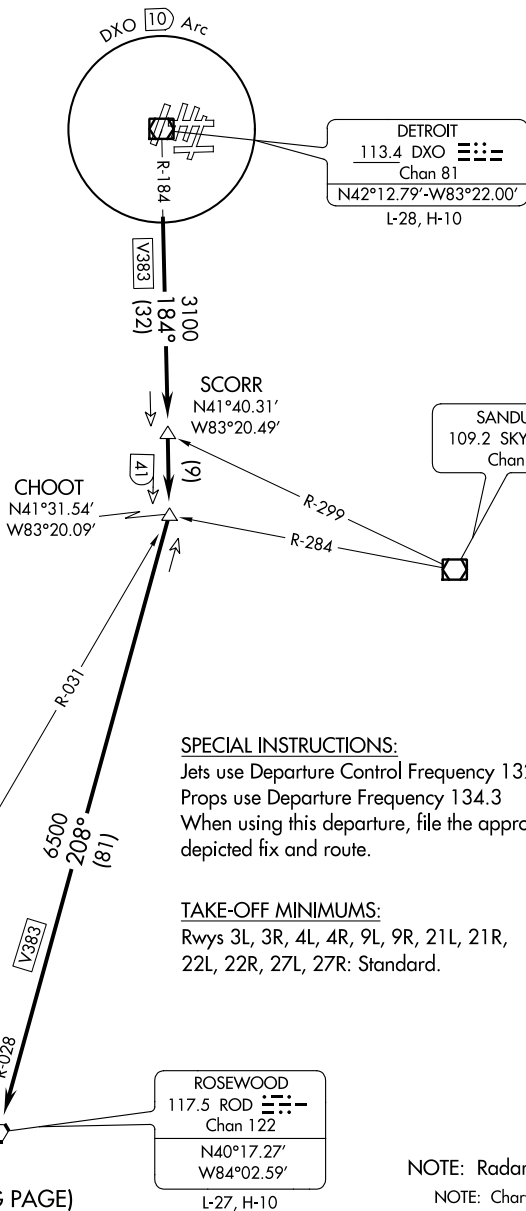


# ROSEWOOD THREE DEPARTURE

ATIS 133.675  
 CLNC DEL 120.65  
 GND CON  
 119.45 (EAST)  
 121.8 (WEST)  
 METRO TOWER  
 118.4 317.725 (EAST)  
 135.0 317.725 (WEST)



**SPECIAL INSTRUCTIONS:**

Jets use Departure Control Frequency 132.025.  
 Props use Departure Frequency 134.3  
 When using this departure, file the appropriate depicted fix and route.

**TAKE-OFF MINIMUMS:**

Rwy's 3L, 3R, 4L, 4R, 9L, 9R, 21L, 21R,  
 22L, 22R, 27L, 27R: Standard.

NOTE: Radar required.

NOTE: Chart not to scale.

(NARRATIVE ON FOLLOWING PAGE)

# ROSEWOOD THREE DEPARTURE

EC-1, 26 JUN 2014 to 24 JUL 2014

EC-1, 26 JUN 2014 to 24 JUL 2014