

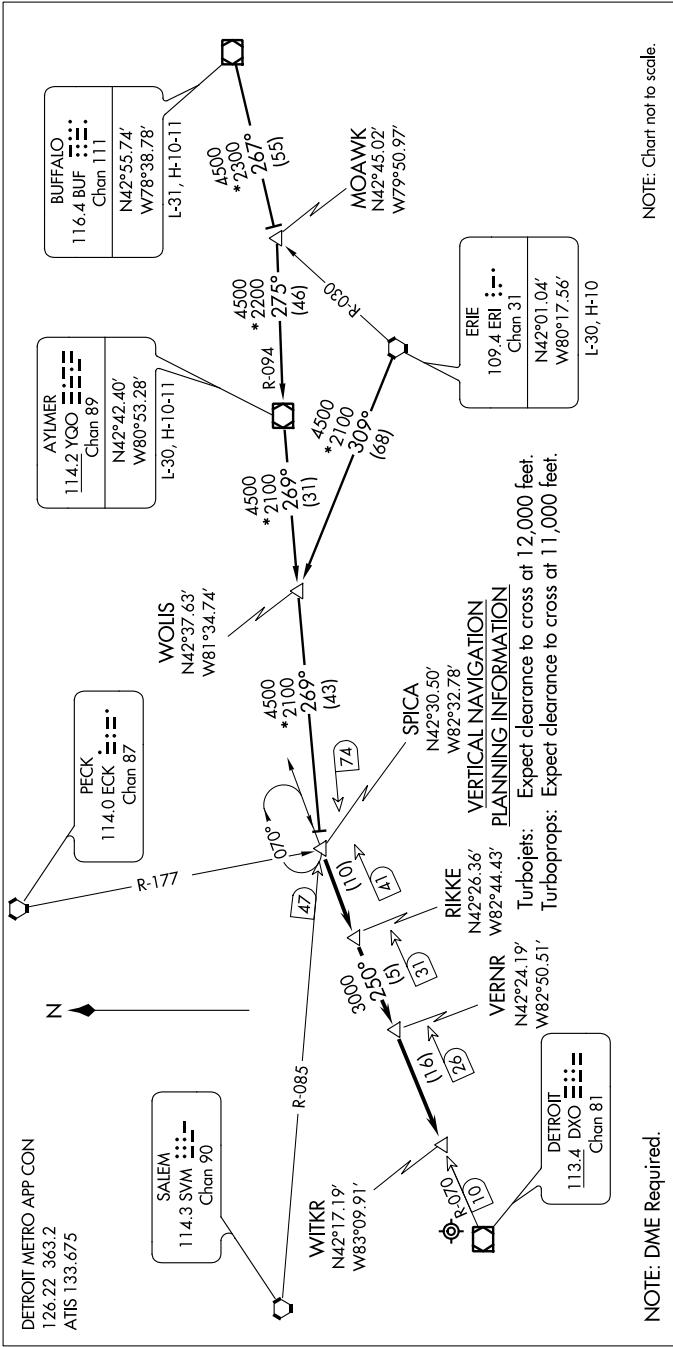
# SPICA TWO ARRIVAL

ST-119 (FAA)

DETROIT METROPOLITAN WAYNE COUNTY

DETROIT, MICHIGAN

EC-1, 26 JUN 2014 to 24 JUL 2014



NOTE: Chart not to scale.

AYLMER TRANSITION (YGO.SPICA2): From over YGO VOR/DME via YGO R-269 to SPICA 74 DME FIX. Thence . . . .

BUFFALO TRANSITION (BUF.SPICA2): From over BUF VOR/DME via BUF R-267 to MOAWK INT, then via YGO R-094 to YGO VOR/DME, then via YGO R-269 to SPICA 74 DME FIX. Thence . . . .

ERIE TRANSITION (ERI.SPICA2): From over ERI VORTAC via ERI R-309 to WOLIS INT, then via YGO R-269 to SPICA 74 DME FIX. Thence . . . .

. . . . From over SPICA 74 DME FIX:  
Landing Runway 21L/R or 22L/R via DXO R-070 to VERNR 26 DME FIX. Thence . . . .  
Landing Runway 3L/R or 4L/R via DXO R-070 to WITKR 10 DME FIX. Thence . . . .  
. . . . Expect radar vectors to final approach course.

# SPICA TWO ARRIVAL

DETROIT, MICHIGAN

DETROIT METROPOLITAN WAYNE COUNTY

EC-1, 26 JUN 2014 to 24 JUL 2014