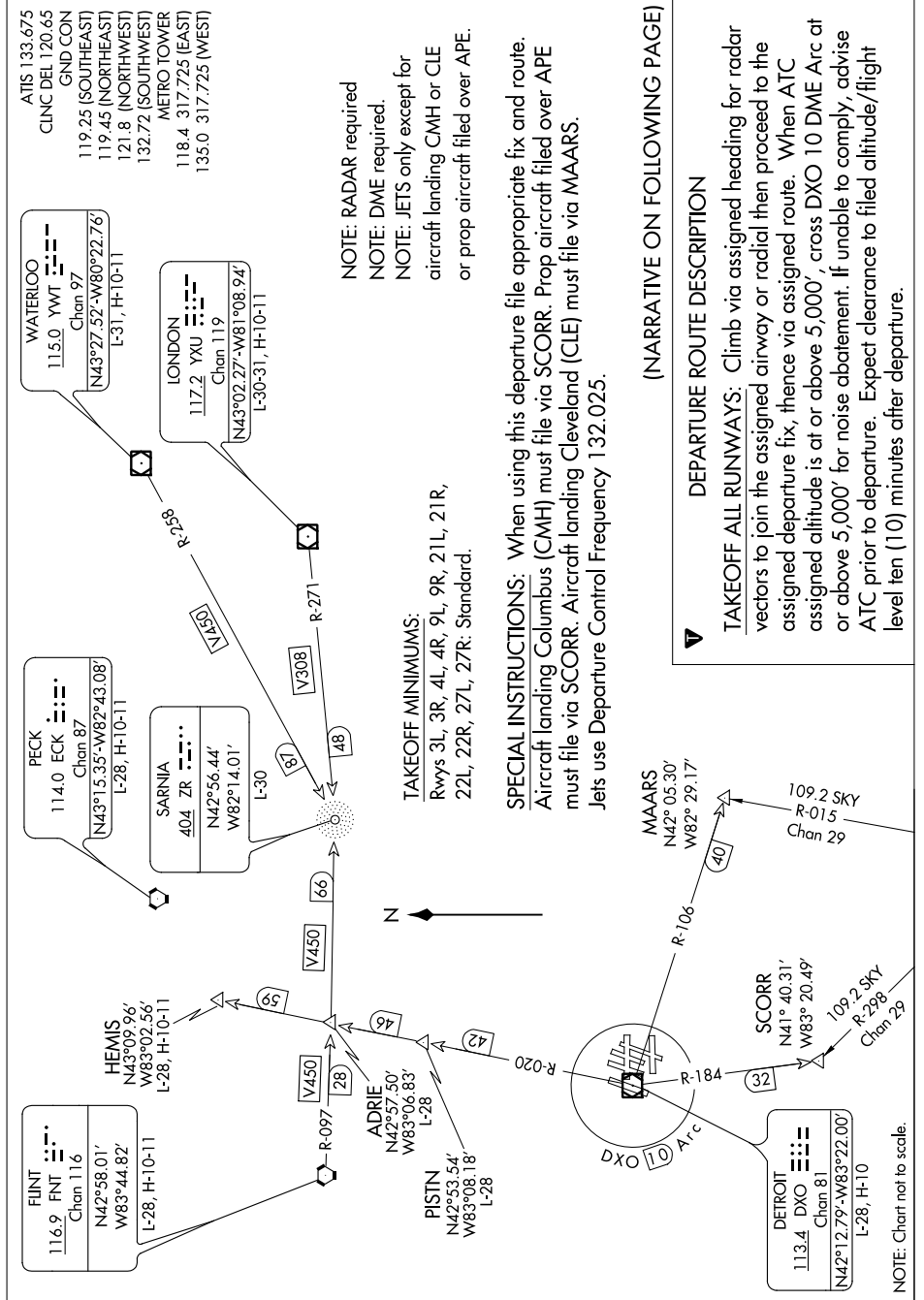


# ST. CLAIR SIX DEPARTURE

EC-1, 26 JUN 2014 to 24 JUL 2014



NOTE: RADAR required  
 NOTE: DME required.  
 NOTE: JETS only except for  
 aircraft landing CMH or CLE  
 or prop aircraft filed over APE.

### TAKEOFF MINIMUMS:

Rwys 3L, 3R, 4L, 4R, 9L, 9R, 21L, 21R,  
 22L, 22R, 27L, 27R: Standard.

**SPECIAL INSTRUCTIONS:** When using this departure file appropriate fix and route.  
 Aircraft landing Columbus (CMH) must file via SCORR. Prop aircraft filed over APE  
 must file via SCORR. Aircraft landing Cleveland (CLE) must file via MAARS.  
 Jets use Departure Control Frequency 132.025.

### (NARRATIVE ON FOLLOWING PAGE)

### DEPARTURE ROUTE DESCRIPTION

**TAKEOFF ALL RUNWAYS:** Climb via assigned heading for radar vectors to join the assigned airway or radial then proceed to the assigned departure fix, thence via assigned route. When ATC assigned altitude is at or above 5,000', cross DXO 10 DME Arc at or above 5,000' for noise abatement. If unable to comply, advise ATC prior to departure. Expect clearance to filed altitude/flight level ten (10) minutes after departure.

EC-1, 26 JUN 2014 to 24 JUL 2014

NOTE: Chart not to scale.