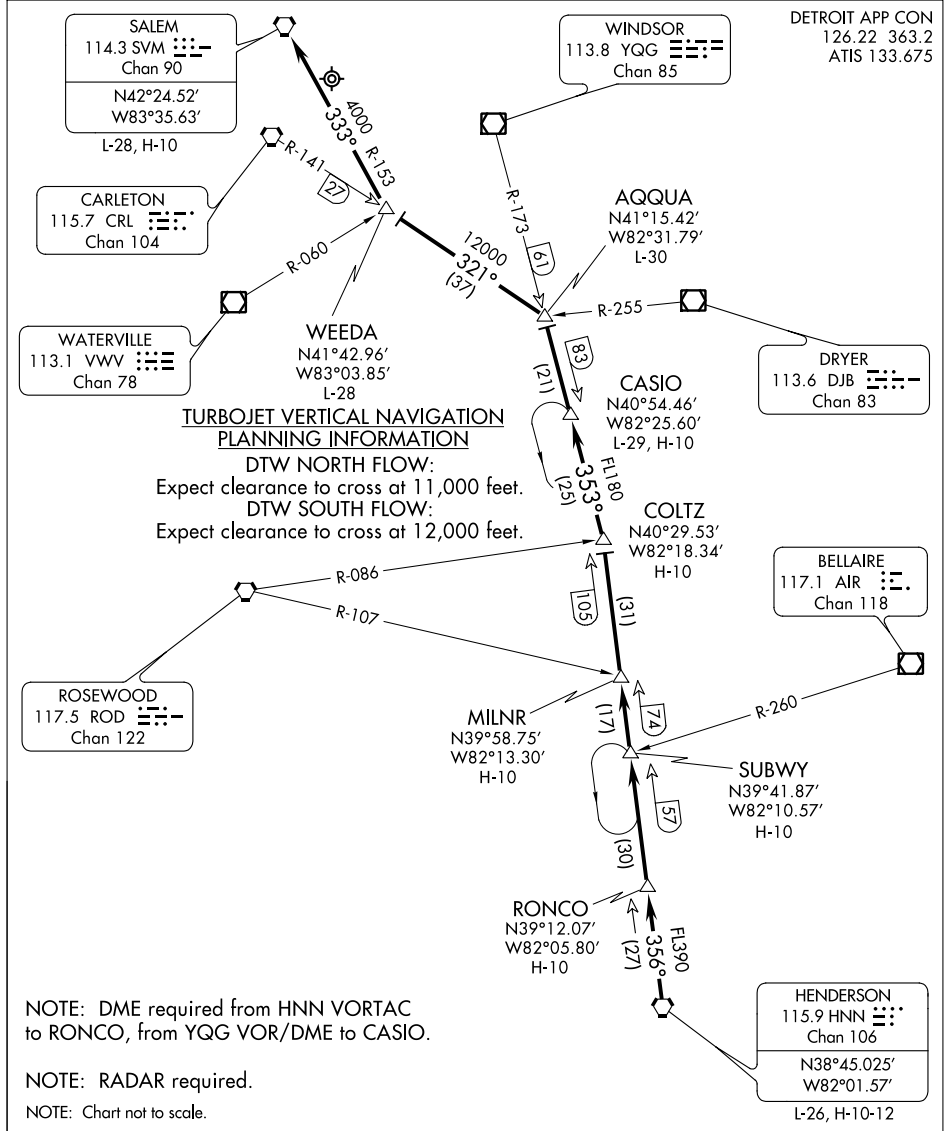


WEEDA ONE ARRIVAL

ST-119 (FAA)

DETROIT, MICHIGAN

DETROIT APP CON
126.22 363.2
ATIS 133.675



EC-1, 26 JUN 2014 to 24 JUL 2014

EC-1, 26 JUN 2014 to 24 JUL 2014

ARRIVAL ROUTE DESCRIPTION

From over HNN VORTAC via R-356 to COLTZ INT (MEA FL390), then via YQG R-173 to AQQUA INT (MEA FL180), then via CRL R-141 TO WEEDA INT (MEA 12000) then via SVM R-153 TO SVM VORTAC (MEA 4000). Expect radar vectors to final approach course.