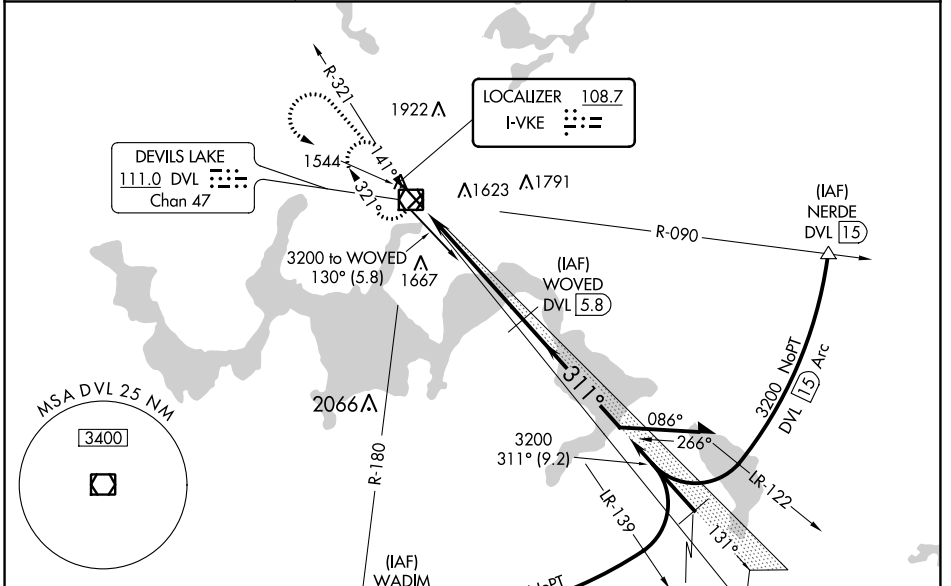


LOC I-VKE 108.7	APP CRS 311°	Rwy Idg TDZE Apt Elev	6401 1450 1470
---------------------------	------------------------	-----------------------------	---

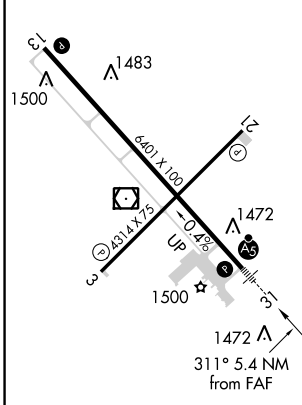
ILS or LOC/DME RWY 31

DEVILS LAKE RGNL (DVL)

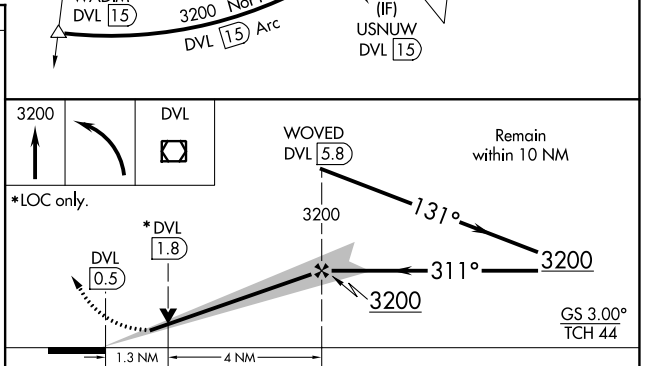
<p>NA When local altimeter setting not received, use Cando altimeter setting and increase all DA 63 feet and all MDA 80 feet and increase S-LOC 31 Cat C/D and Circling Cat C/D visibility 1/4 mile. For inop MALSRS when using Cando altimeter setting, increase S-ILS 31 all Cats visibility to 2/8 mile and S-LOC 31 Cat C/D to 1/2 mile. DME from DVL VOR/DME. Simultaneous reception of I-VKE and DVL DME required.</p>	<p>MALSRS</p>	<p>MISSED APPROACH: Climb to 3200 then left turn direct DVL VOR/DME and hold.</p>
<p>AWOS-3PT 125.875</p>	<p>MINNEAPOLIS CENTER 124.2 270.3</p>	<p>UNICOM 122.8 (CTAF)</p>



ELEV 1470	D	TDZE 1450
-----------	---	-----------



- HIRL Rwy 13-31
- REIL Rwy 3, 13 and 21
- MIRL Rwy 3-21



CATEGORY	A	B	C	D
S-ILS 31		1650-1/2	200 (200-1/2)	
S-LOC 31		1780-1/2	330 (400-1/2)	
C CIRCLING	2000-1	530 (600-1)	2240-2 1/4 770 (800-2 1/4)	2240-2 1/2 770 (800-2 1/2)

NC-1, 25 FEB 2021 to 25 MAR 2021

NC-1, 25 FEB 2021 to 25 MAR 2021