

|  |                        |   |
|--|------------------------|---|
| WAAS<br>CH <b>78314</b><br><b>W13A</b> | APP CRS<br><b>131°</b> | Rwy ldg <b>6401</b><br>TDZE <b>1470</b><br>Apt Elev <b>1470</b> |
|--|------------------------|---|

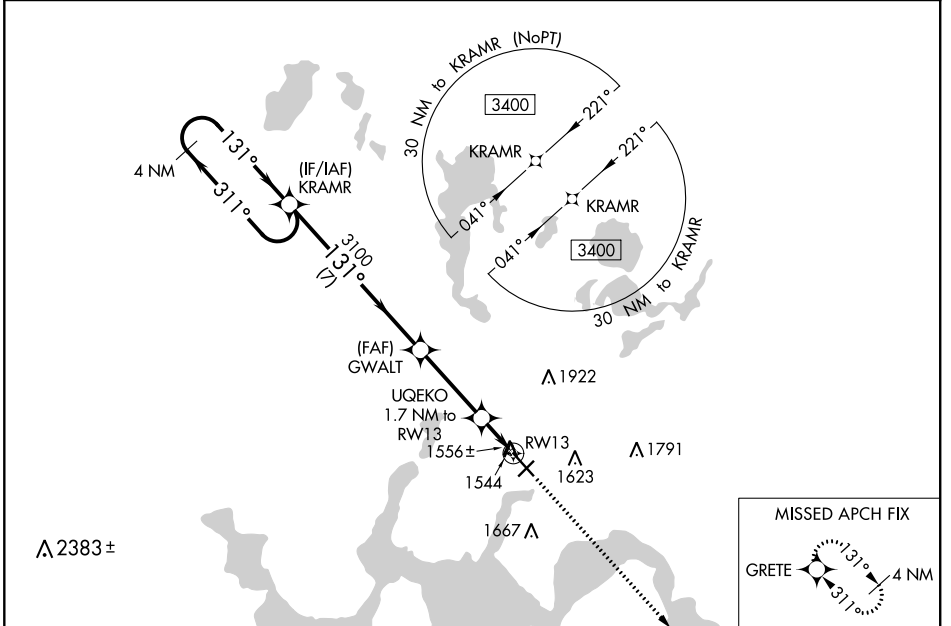
# RNAV (GPS) RWY 13

DEVILS LAKE RGNL (DVL)

**⚠** For uncompensated Baro-VNAV systems, LNAV/VNAV NA below -17°C (2°F) or above 54°C (130°F). DME/DME RNP-0.3 NA. Baro-VNAV and VDP NA when using Cando altimeter setting. When local altimeter setting not received, use Cando altimeter setting and increase all DA 63 feet and all MDA 80 feet, increase LPV and LNAV/VNAV all. Cats visibility ¼ mile, LNAV and Circling Cats C and D visibility ½ mile.

MISSED APPROACH: Climb to 3400 direct GRETE and hold.

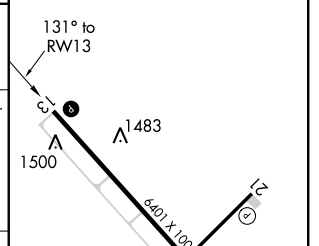
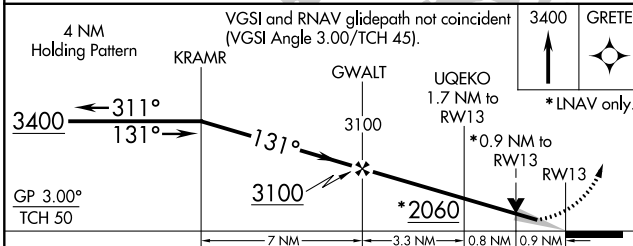
|                            |  |                               |
|----------------------------|--|-------------------------------|
| AWOS-3PT<br><b>125.875</b> | MINNEAPOLIS CENTER<br><b>124.2 270.3</b> | UNICOM<br><b>122.8 (CTAF)</b> |
|----------------------------|--|-------------------------------|



NC-1, 25 FEB 2021 to 25 MAR 2021

NC-1, 25 FEB 2021 to 25 MAR 2021

|           |          |           |
|-----------|----------|-----------|
| ELEV 1470 | <b>D</b> | TDZE 1470 |
|-----------|----------|-----------|



| CATEGORY          | A      | B           | C                       | D                       |
|-------------------|--------|-------------|-------------------------|-------------------------|
| LPV DA            |        | 1720-¾      | 250 (300-¾)             |                         |
| LNAV/VNAV DA      |        | 1791-1      | 321 (400-1)             |                         |
| LNAV MDA          |        | 1820-1      | 350 (400-1)             |                         |
| <b>C</b> CIRCLING | 2000-1 | 530 (600-1) | 2240-2¼<br>770 (800-2¼) | 2240-2½<br>770 (800-2½) |

HIRL Rwy 13-31 **Ⓛ** 1472 **Ⓛ**  
 REIL Rws 3, 13, and 21 **Ⓛ**  
 MIRL Rwy 3-21 **Ⓛ**