

VOR/DME DVL <b>111.0</b> Chan <b>47</b>	APP CRS <b>030°</b>	Rwy Idg <b>4314</b> TDZE <b>1450</b> Apt Elev <b>1470</b>
-----------------------------------------------	------------------------	-----------------------------------------------------------------

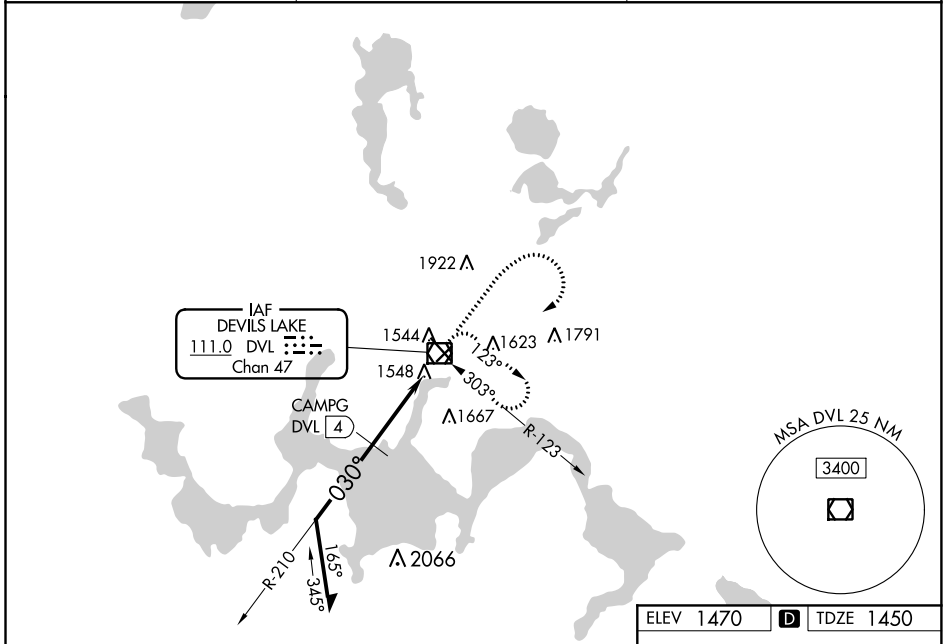
# VOR RWY 3

DEVILS LAKE RGNL (DVL)

**⚠** When local altimeter setting not received, use Cando altimeter setting and increase all MDA 80 feet, increase S-3 Cat A and Circling Cats C/D visibility ¼ SM, CAMPG fix minimums S-3 Cats C/D visibility ⅓ SM and Circling Cats C/D visibility ¼ SM. Helicopter visibility reduction below 1 SM NA.

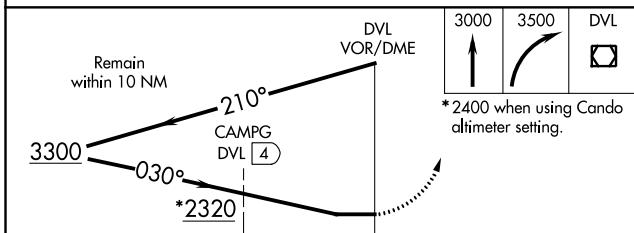
**⚠** MISSED APPROACH: Climb to 3000 then climbing right turn to 3500 direct DVL VOR/DME and hold.

AWOS-3PT <b>125.875</b>	MINNEAPOLIS CENTER <b>124.2 270.3</b>	UNICOM <b>122.8 (CTAF) 0</b>
----------------------------	------------------------------------------	---------------------------------



NC-1, 25 FEB 2021 to 25 MAR 2021

NC-1, 25 FEB 2021 to 25 MAR 2021



	ELEV 1470		TDZE 1450	
	3000		3500	
	DVL		DVL	
	*2400 when using Cando altimeter setting.			
CATEGORY	A	B	C	D
S-3	2320-1 870 (900-1)	2320-1¼ 870 (900-1¼)	2320-2½	870 (900-2½)
<b>C</b> CIRCLING	2320-1¼	850 (900-1¼)	2320-2½	2320-2¾ 850 (900-2¾)
CAMPG FIX MINIMUMS				
S-3	1820-1		370 (400-1)	
<b>C</b> CIRCLING	2000-1	530 (600-1)	2240-2¼ 770 (800-2¼)	2240-2½ 770 (800-2½)

