

WAAS CH <b>58319</b> <b>W34A</b>	APP CRS <b>344°</b>	Rwy Idg <b>6000</b> TDZE <b>100</b> Apt Elev <b>100</b>
--	------------------------	---

# RNAV (GPS) RWY 34

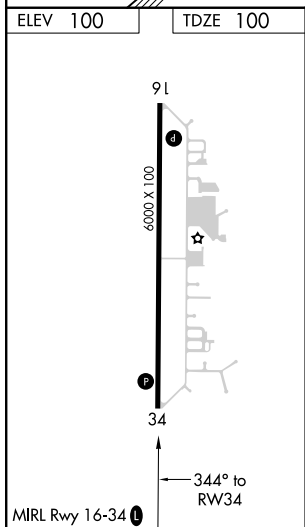
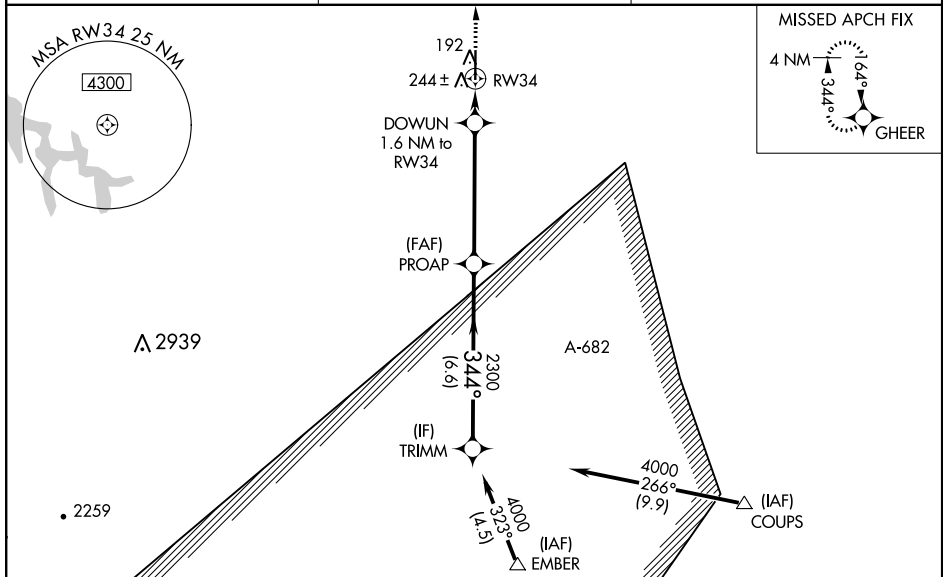
YOLO COUNTY (DWA)

RNP APCH.

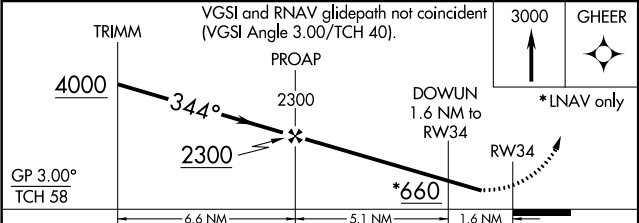
**NA** When local altimeter setting not received, use Travis AFB altimeter setting and increase all DA 50 feet and all MDA 60 feet, and increase LPV visibility all Cats 1/8 mile, LNAV/VNAV visibility all Cats 1/4 mile, and LNAV Cat C and D visibility 1/4 mile. For uncompensated Baro-VNAV systems, LNAV/VNAV NA below -15°C (5°F) or above 42°C (107°F). Baro-VNAV NA when using Travis AFB altimeter setting.

MISSED APPROACH: Climb to 3000 direct GHEER and hold.

AWOS-3P <b>125.775</b>	TRAVIS APP CON <b>126.6 281.45</b>	UNICOM <b>123.0 (CTAF)</b>
---------------------------	---------------------------------------	-------------------------------



Procedure NA for arrivals at OAKLEY on V334-392 southbound, for arrivals at COUPS on V6 northbound and for arrivals at EMBER on V150 southwest bound.



CATEGORY	A	B	C	D
LPV DA	415-1 315 (400-1)			
LNAV/VNAV DA	425-1 325 (400-1)			
LNAV MDA	500-1	400 (400-1)	500-1 1/8	400 (400-1 1/8)

SW-2, 25 FEB 2021 to 25 MAR 2021

SW-2, 25 FEB 2021 to 25 MAR 2021