

EDWARDS, CALIFORNIA

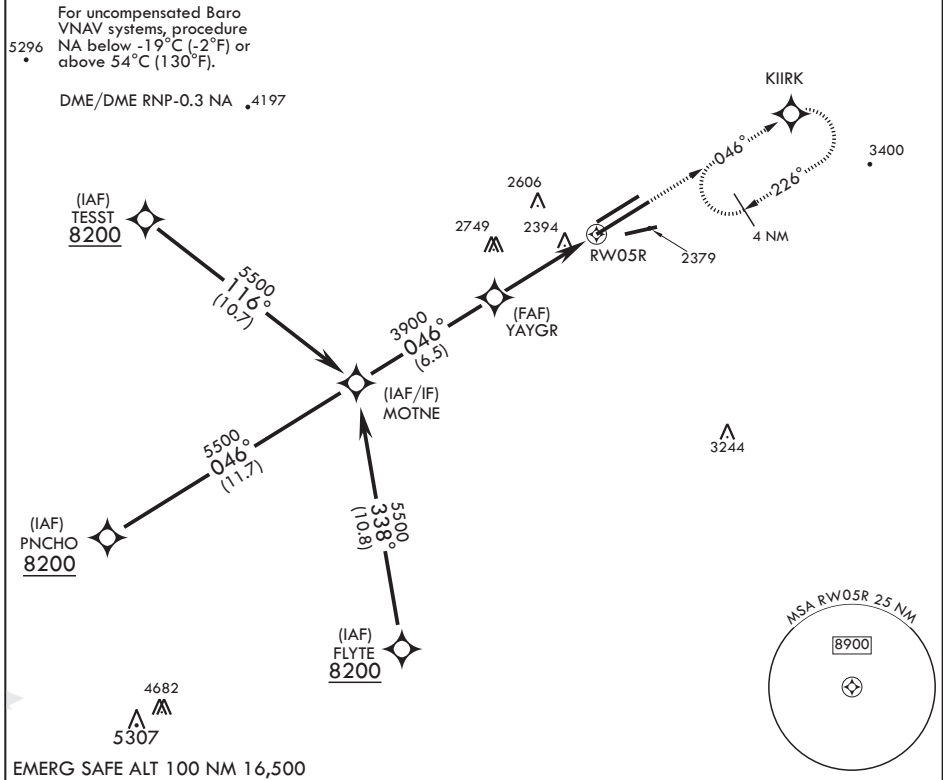
RNAV (GPS) RWY 5R

APCH CRS 046°	Rwy Idg 15,024
	TDZE 2303
	Arprt Elev 2311

AL-500 (USAF)

EDWARDS AFB (KEDW)

<p>⚠ * Circling not authorized NW of Rwy 5L-23R.</p>		<p>MISSED APPROACH: Climb to 5700 direct KIIRK and hold, continue climb-in-hold to 5700.</p>	
<p>ATIS* 127.425 269.9</p>	<p>SPORT APP CON/DEP CON 132.75 343.7</p>	<p>TOWER* 120.7 (CTAF) 318.1 (CTAF)</p>	<p>GND CON 121.8 225.4</p>



EMERG SAFE ALT 100 NM 16,500

MOTNE	VGSI and descent angles not coincident.		5700	KIIRK	ELEV 2311	TDZE 2303
5500	046°		YAYGR	↑ LNAV only	2680	
	3900			↑ 1.5 NM to RWY 5R	BCN 2463	TWR
	GP 3.00° TCH 50			4.8 NM	12,000 x 200	2312
					15,024 x 300	2410
					8000 x 50	25
					046° to RWY 5R	
CIRCLING*	2880-1	569 (600-1)	2880-1 1/2	569 (600-1 1/2)	2880-2	569 (600-2)
CATEGORY	A	B	C	D	E	
LNAV/VNAV DA	2820-1 3/8		517	(600-1 3/8)		
LNAV MDA	2820-1		517 (600-1)	2820-1 3/8 517 (600-1 3/8)		
	2880-1		569 (600-1)	2880-2 569 (600-2)		

EDWARDS, CALIFORNIA

34°55'N - 117°53'W

EDWARDS AFB (KEDW)

Amdt 1 30JAN20

RNAV (GPS) RWY 5R

SW-3, 25 FEB 2021 to 25 MAR 2021

SW-3, 25 FEB 2021 to 25 MAR 2021

