

EDWARDS, CALIFORNIA

VOR/DME or TACAN RWY 23R

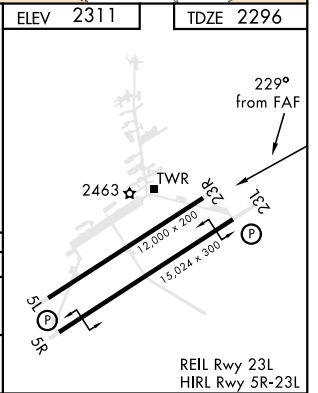
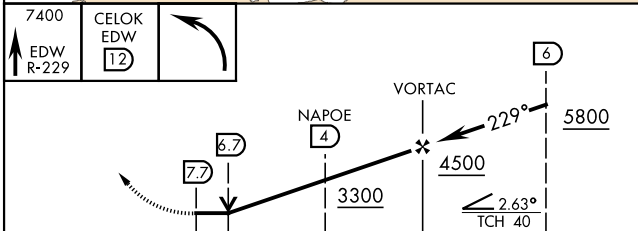
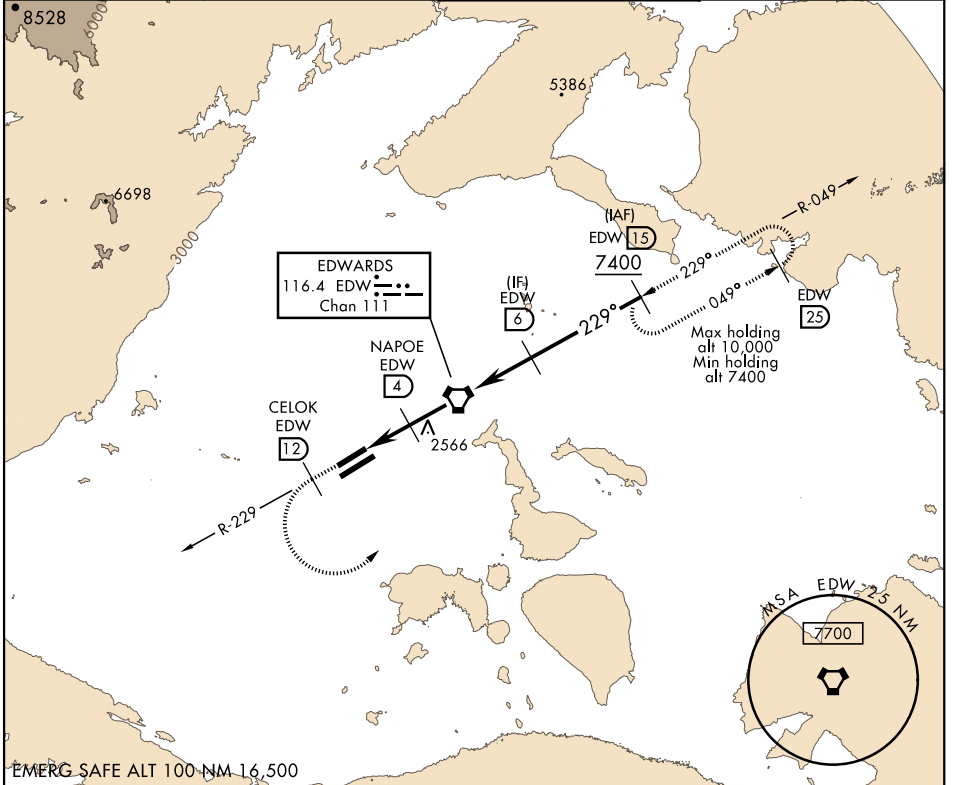
VORTAC EDW 116.4 Chan 111	APCH CRS 229°	Rwy ldg 12,000 TDZE 2296 Arprt Elev 2311
--	-------------------------	---

AL-500 [USAF]

EDWARDS AFB (KEDW)

⚠ * Circling not authorized NW of Rwy 5L-23R.
 Circling not authorized at night to Rwy 5L-23R.
MISSED APPROACH: Track EDW VORTAC R-229 outbound to CELOK, then turn left to EDW R-049/15 DME and hold. Maintain 7400. Missed approach requires use of RNAV or ATC RADAR monitoring.

ATIS ★ 127.425 269.9	SPORT APP CON 132.75 343.7	TOWER★ 120.7 (CTAF) 318.1 (CTAF)	GND CON 121.8 225.4
--------------------------------	--------------------------------------	--	-------------------------------



CATEGORY	A	B	C	D	E
S-23R	2680-1	384 (400-1)	2680-1½	384	(400-1½)
Ⓞ CIRCLING*	2880-1	569 (600-1)	2880-1½	569(600-1½)	2880-2 569 (600-2)

EDWARDS, CALIFORNIA

34°55'N-117°53'W

EDWARDS AFB (KEDW)

Admt 1 30JAN20

VOR/DME or TACAN RWY 23R

SW-3, 25 FEB 2021 to 25 MAR 2021

SW-3, 25 FEB 2021 to 25 MAR 2021