

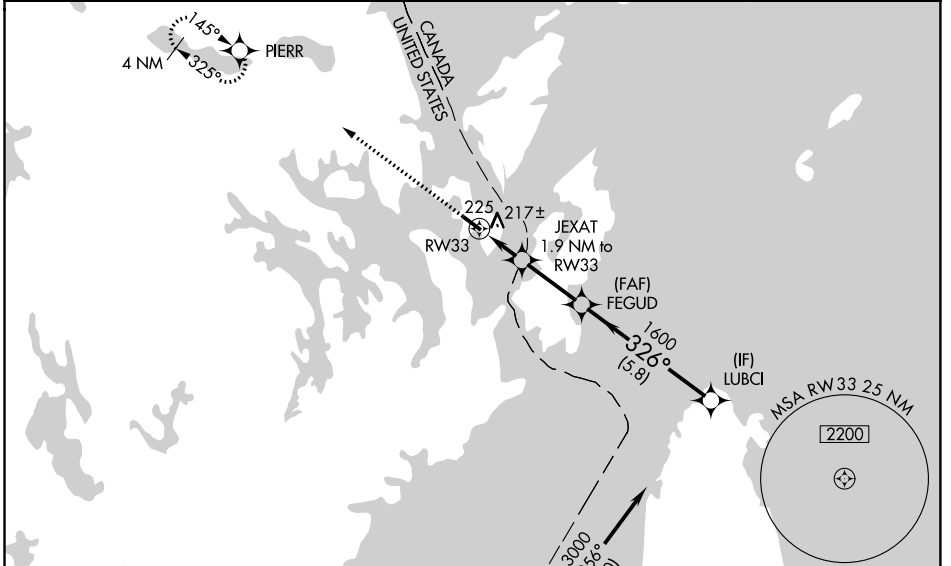
WAAS CH 78340 W33A	APP CRS 326°	Rwy Idg TDZE Apt Elev	4002 45 45
--	------------------------	-----------------------------	---------------------------------------

RNAV (GPS) RWY 33

EASTPORT MUNI (EPM)

RNP APCH.	For uncompensated Baro-VNAV systems, LNAV/VNAV NA below -15°C or above 47°C. Rwy 33 helicopter visibility reduction below ¼ SM NA. When local altimeter setting not received, use Hancock County-Bar Harbor altimeter setting; increase LPV DA to 531 feet and all visibilities ½ SM; increase LNAV/VNAV DA to 552 feet and all visibilities ½ SM; increase all MDA 160 feet and visibility Cat C and D ½ SM. VDP and Baro-VNAV NA when using Hancock County-Bar Harbor altimeter setting. Circling Rwy 15 NA at night.	MISSED APPROACH: Climb to 4000 direct PIERR and hold, continue climb-in-hold to 4000.
-----------	---	--

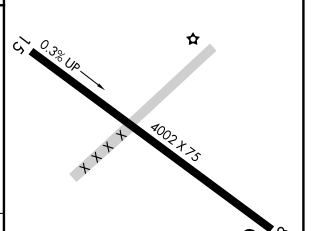
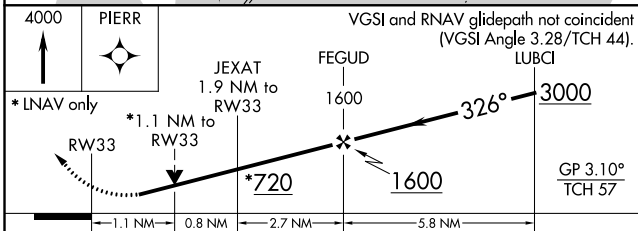
AWOS-AV 122.8	BOSTON CENTER 124.25 290.5	UNICOM 122.8 (CTAF) 0
-------------------------	--------------------------------------	---------------------------------



NE-1, 25 FEB 2021 to 25 MAR 2021

NE-1, 25 FEB 2021 to 25 MAR 2021

ELEV 45	TDZE 45
△ 250±	



CATEGORY	A	B	C	D
LPV DA		378-1	333 (400-1)	
LNAV/VNAV DA		386-1	341 (400-1)	
LNAV MDA	480-1	435 (500-1)	480-1¼	435 (500-1¼)
CIRCLING	580-1	535 (600-1)	580-1½	720-2¼ 675 (700-2¼)

MIRL Rwy 15-33 0	REIL Rwy 15 and 33 0
------------------	----------------------