


LOC FFCM 109.7	APP CRS 098°	Rwy Idg TDZE Apt Elev	5000 905 906
--------------------------	------------------------	-----------------------------	---

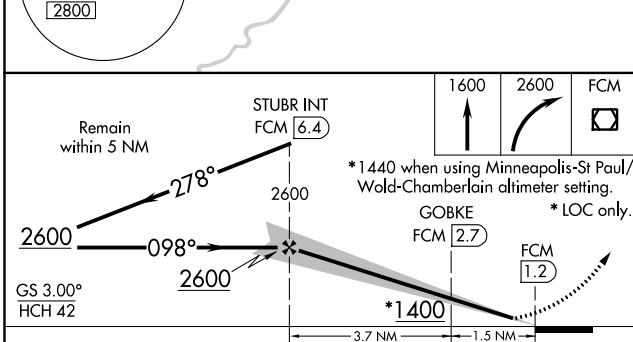
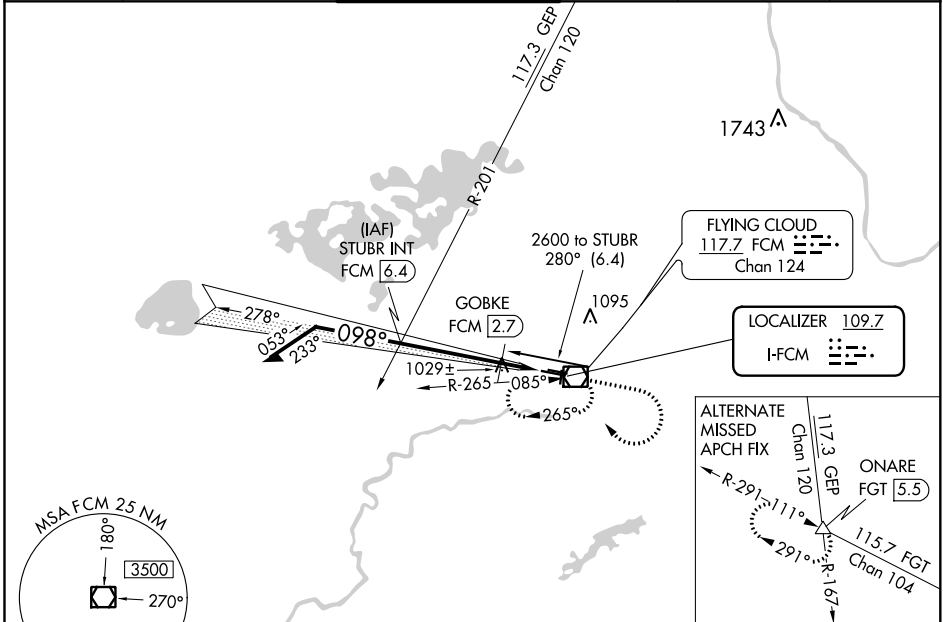
COPTER ILS or LOC RWY 10R

FLYING CLOUD (FCM)

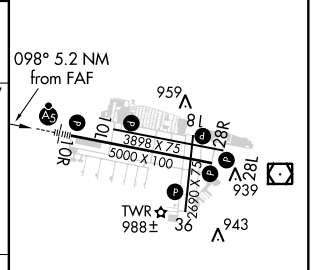
⚠ For inoperative MALSR, increase visibility to ½ mile. When local altimeter setting not received, use Minneapolis-St Paul Intl-Wold Chamberlain altimeter setting and increase DA 34 feet and all MDA 40 feet. Night Landing: Rwy 18/36 NA.

MALSR  MISSED APPROACH: Climb to 1600 then climbing right turn to 2600 direct FCM VOR/DME and hold, continue climb-in-hold to 2600.


ATIS 124.9	MINNEAPOLIS APP CON 134.7 284.7	FLYING CLOUD TOWER * 119.15 (CTAF) 	GND CON 121.7	CLNC DEL 121.7 (When twr closed)	UNICOM 122.95
----------------------	---	--	-------------------------	---	-------------------------



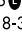
ELEV 906	TDZE 905
----------	----------

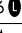


CATEGORY	COPTER	B	C	D
H-ILS 10R	1105-¼ 200 (200-¼)		NA	
H-LOC 10R	1400-¼ 495 (500-¼)		NA	
GOBKKE FIX MINIMUMS				
H-LOC 10R	1280-¼ 375 (400-¼)		NA	

HIRL Rwy 10R-28L 

REIL Rwy 10L, 28R

REIL Rwy 18, 28L, and 36 

MIRL Rwy 10L-28R and 18-36 

FAF to MAP 5.2 NM

Knots	45	60	75	90	105
Min:Sec	6:56	5:12	4:10	3:28	2:58

NC-1, 25 FEB 2021 to 25 MAR 2021

NC-1, 25 FEB 2021 to 25 MAR 2021