

VOR/DME FCM 117.7 Chan 124	APP CRS 035°	Rwy ldg TDZE Apt Elev	2690 905 906
---	------------------------	-----------------------------	---

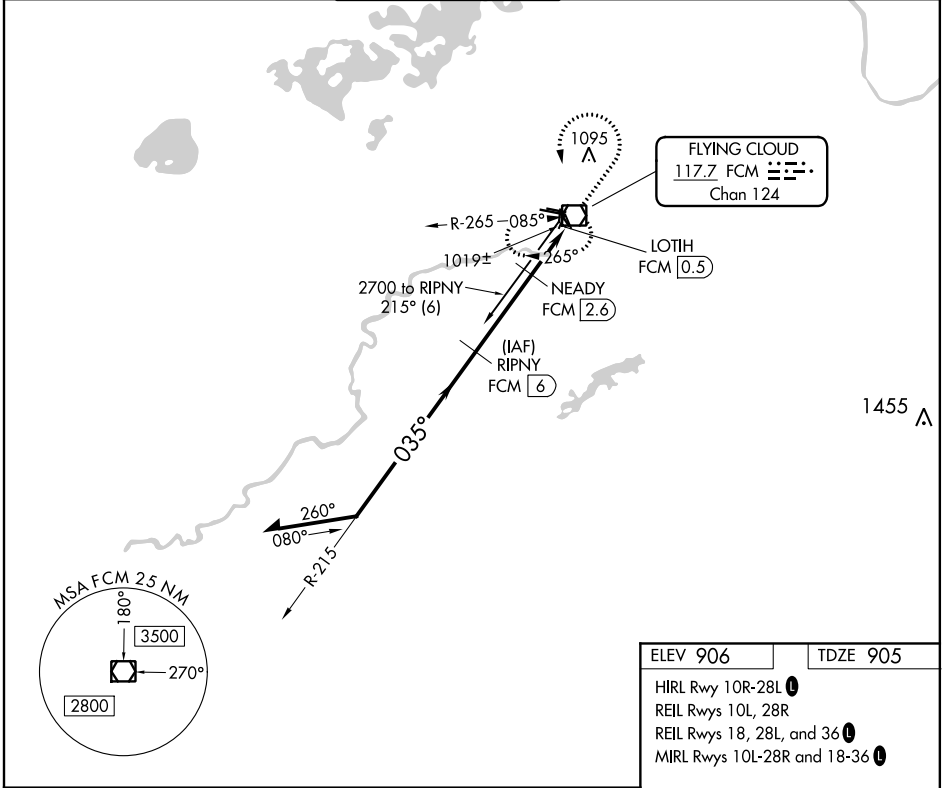
VOR/DME RWY 36

FLYING CLOUD (FCM)

⚠ When local altimeter setting not received, use Minneapolis St Paul Intl/Wold Chamberlain altimeter setting and increase all MDA 40 feet and S-36 Cat C visibility 1/8 mile. Helicopter visibility reduction below 1 SM NA. Night Landing: Rwy 18/36 NA.

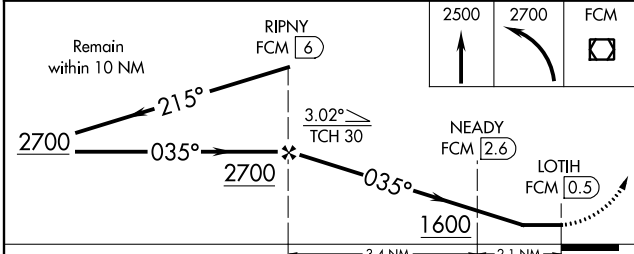
MISSED APPROACH: Climb to 2500 then climbing left turn to 2700 direct FCM VOR/DME and hold.

ATIS 124.9	MINNEAPOLIS APP CON 134.7 284.7	FLYING CLOUD TOWER * 119.15 (CTAF)	GND CON 121.7	CLNC DEL 121.7 (When twr closed)	UNICOM 122.95
----------------------	---	--	-------------------------	---	-------------------------

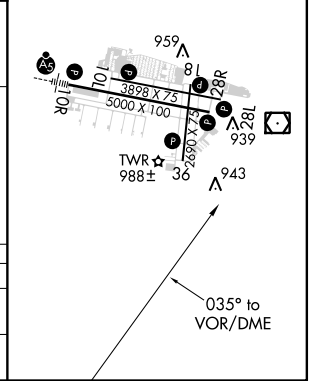


NC-1, 25 FEB 2021 to 25 MAR 2021

NC-1, 25 FEB 2021 to 25 MAR 2021



ELEV 906	TDZE 905
HIRL Rwy 10R-28L REIL Rwy 10L, 28R REIL Rwy 18, 28L, and 36 MIRL Rwy 10L-28R and 18-36	



CATEGORY	A	B	C	D
S-36	1280-1	375 (400-1)		NA
C CIRCLING	1320-1 414 (500-1)	1440-1 534 (600-1)	1440-1½ 534 (600-1½)	NA