

NC-1, 25 FEB 2021 to 25 MAR 2021

**TOP ALTITUDE:
(JETS) 7000/
(PROPS) 5000**

ATIS 124.9
MINNEAPOLIS CLNC DEL 121.7 (when tower closed)
FLYING CLOUD TOWER ★ 119.15
MINNEAPOLIS DEP CON 134.7 284.7

MINNEAPOLIS
115.3 MSP
Chan 100
N44°53.79'-W93°14.19'



TAKEOFF MINIMUMS
Rwys 10L/R, 18, 28L/R, 36: Standard.

HALFWAY
111.2 FOW
Chan 49

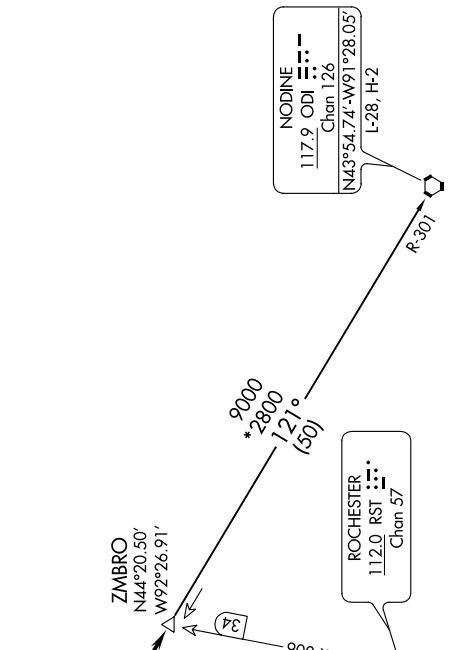


DEPARTURE ROUTE DESCRIPTION

TAKEOFF ALL RUNWAYS: Fly assigned heading and altitude for RADAR vectors to MSP VOR/DME then on MSP R-138 to cross JEDET INT/MSP 34 DME, at or above 4000; then on ODI R-301 to ZMBRO INT/ODI 50 DME, thence

.on assigned transition or route. Expect clearance to filed altitude/flight level 10 (ten) minutes after departure.

NODINE TRANSITION [ZMBRO7.ODI]: From over ZMBRO on ODI R-301 to ODI VORTAC.



NOTE: RADAR required.
NOTE: Chart not to scale.

NC-1, 25 FEB 2021 to 25 MAR 2021