

FORT CARSON, COLORADO

VOR or GPS RWY 31

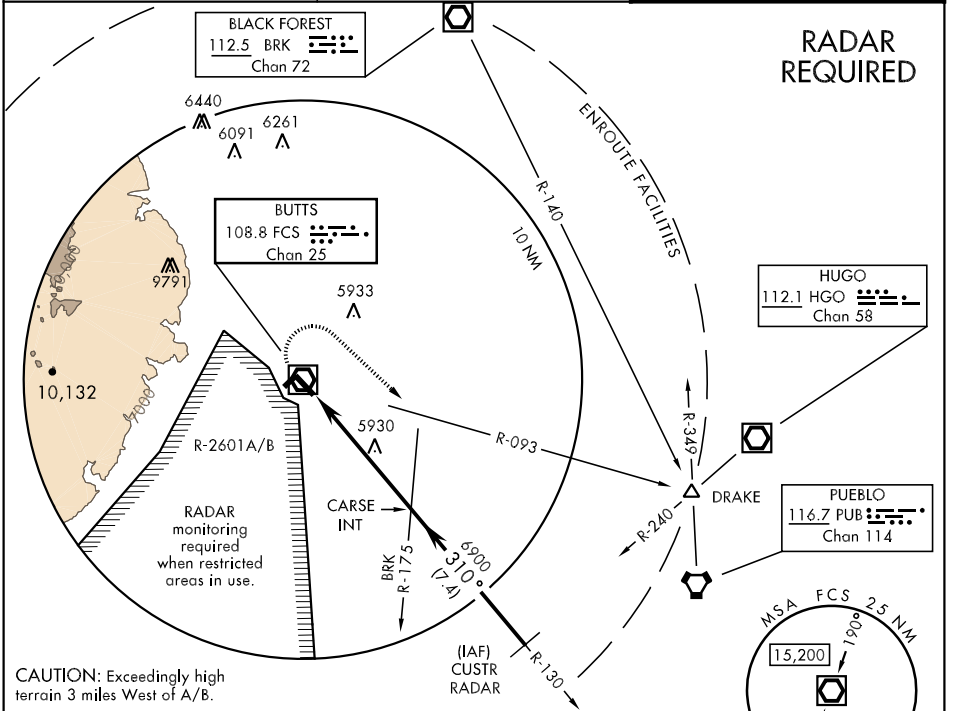
BUTTS AAF (KFCS)

VOR/DME FCS 108.8 Chan 25	APCH CRS 310°	Rwy Idg TDZE 5823 Arpt Elev 5838
---	-------------------------	---

AL-6594 [USA]

▽ NA	When class D surface area is closed use Colorado Springs, CO altimeter setting.	MISSED APPROACH: Climbing right turn to 9000 via FCS VOR/DME R-093 to DRAKE INT.
-------------	---	--

ATIS 108.8	SPRINGS APP CON 124.0 257.875	BUTTS TOWER 125.5 229.4 41.5
----------------------	---	--



RADAR REQUIRED

CAUTION: Exceedingly high terrain 3 miles West of A/B.

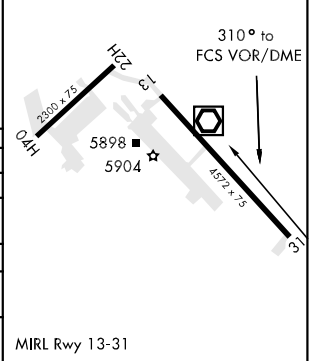


ELEV 5838	TDZE 5823
-----------	-----------

CATEGORY	A	B	C	D
S-31	6200-1	377 (400-1)		NA
CIRCLING	6340-1	502 (600-1)	6340-1½ 502 (600-1½)	NA

CITY OF COLORADO SPRINGS MUNI ALTIMETER SETTING MINIMUMS

S-31	6260-1	437 (500-1)	6260-1¼ 437 (500-1¼)	NA
CIRCLING	6400-1	562 (600-1)	6420-1½ 582 (600-1½)	NA



MIRL Rwy 13-31

FORT CARSON, COLORADO
Amdt 3A 20OCT11

38°41'N-104°46'W

BUTTS AAF (KFCS)

VOR or GPS RWY 31

SW-1, 26 JUN 2014 to 24 JUL 2014

SW-1, 26 JUN 2014 to 24 JUL 2014