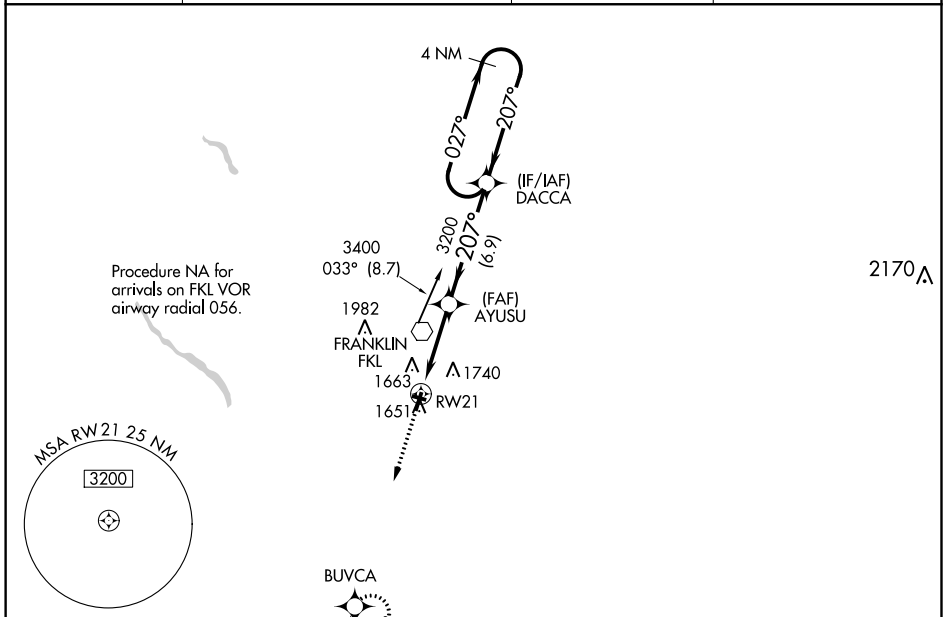


WAAS CH 77501 W21A	APP CRS 207°	Rwy Idg TDZE Apt Elev	5200 1540 1540
--	------------------------	-----------------------------	---

RNAV (GPS) RWY 21

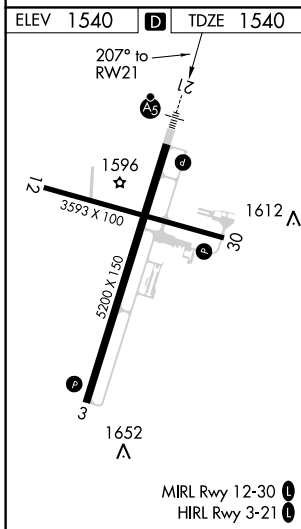
VENANGO RGNL (F'KL)

RNP APCH.		MALSRL	MISSED APPROACH: Climb to 3400 direct BUVCA and hold.
<p>▼ For uncompensated Baro-VNAV systems, LNAV/VNAV NA below -18°C (0°F) or above 45°C (114°F). Circling Rwy 12 NA at night. For inop ALS, increase LPV all Cats visibility to 7/6 SM and LNAV Cats C/D visibility to 1 SM.</p>			
AWOS-3PT 118.175	YOUNGSTOWN APP CON ★ 126.25 322.3	CLNC DEL 126.25	UNICOM 122.7 (CTAF) 0



NE-4, 25 FEB 2021 to 25 MAR 2021

NE-4, 25 FEB 2021 to 25 MAR 2021



ELEV 1540	D	TDZE 1540		
3400	BUVCA	4 NM Holding Pattern		
*LNAV only.		DACCA		
*1 NM TO RW21		AYUSU		
RW21		3200		
1 NM		4 NM		
6.9 NM		3400		
		GP 3.00° TCH 55		
CATEGORY	A	B	C	D
LPV DA	1803-1/2 263 (300-1/2)			
LNAV/VNAV DA	1901-3/4 361 (400-3/4)			
LNAV MDA	1900-1/2 360 (400-1/2)		1900-5/8 360 (400-5/8)	
CIRCLING	1960-1 420 (500-1 1/4)	2000-1 460 (500-1 1/4)	2000-1 1/2 460 (500-1 1/2)	2100-2 560 (600-2)