

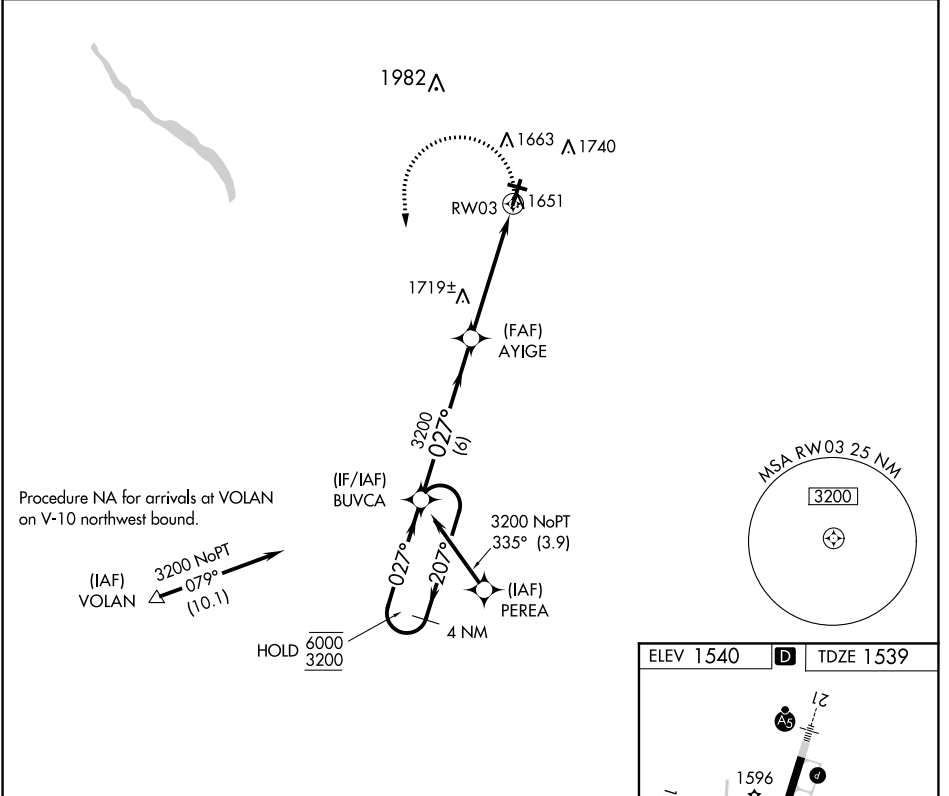
# RNAV (GPS) RWY 3

VENANGO RGNL (F'KL)

APP CRS <b>027°</b>	Rwy Idg <b>5200</b>
	TDZE <b>1539</b>
	Apt Elev <b>1540</b>

RNP APCH.	MISSED APPROACH: Climbing left turn to 3200 direct BUVCA and hold.
<p><b>▼</b> Rwy 3 helicopter visibility reduction below 3/4 SM NA.</p> <p><b>▲</b> Circling Rwy 12 NA at night.</p>	

AWOS-3PT <b>118.175</b>	YOUNGSTOWN APP CON ★ <b>126.25 322.3</b>	CLNC DEL <b>126.25</b>	UNICOM <b>122.7</b> (CTAF) <b>①</b>
----------------------------	---	---------------------------	--



NE-4, 25 FEB 2021 to 25 MAR 2021

NE-4, 25 FEB 2021 to 25 MAR 2021

4 NM Holding Pattern	Visual Segment-Obstacles.		3200	BUVCA
	BUVCA	AYIGE		
6000 ← 207°	← 027° →	027° →	3200	1.3 NM to RWY 3
	6 NM	3.7 NM	1.3	
CATEGORY	A	B	C	D
RNAV MDA	1980-1	441 (500-1)	1980-1 3/8	441 (500-1 3/8)
CIRCLING	1980-1 440 (500-1)	2000-1 460 (500-1)	2000-1 1/2 460 (500-1 1/2)	2100-2 560 (600-2)

