


LOC/DME I-GAO <b>109.1</b> Chan 28	APP CRS <b>359°</b>	Rwy ldg <b>6500</b> TDZE <b>-2</b> Apt Elev <b>0</b>
------------------------------------------	------------------------	------------------------------------------------------------

# ILS or LOC RWY 36

SOUTH LAFOURCHE LEONARD MILLER JR (GAO)

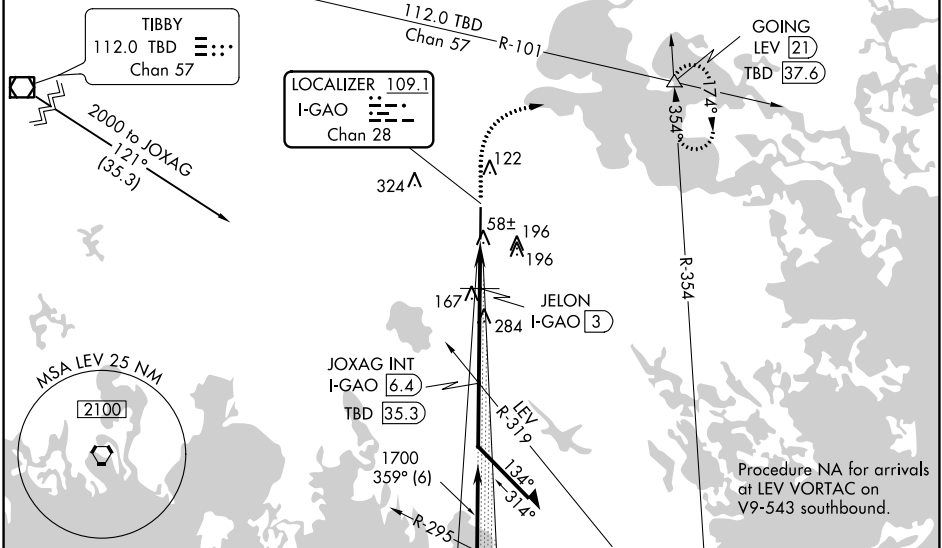
DME required.

SSALR



MISSED APPROACH: Climb to 2000, then climbing right turn to 2000 on heading 050° and TBD VOR/DME R-101 to GOING INT/LEV 21 DME and hold.

AWOS-3PT <b>118.175</b>	NEW ORLEANS APP CON <b>120.85 256.9</b>	CLNC DEL <b>120.85</b>	UNICOM <b>123.0 (CTAF) 0</b>
----------------------------	--------------------------------------------	---------------------------	---------------------------------



ELEV 0	TDZE -2
--------	---------

1200	2000	TBD R-101	GOING	JOXAG INT I-GAO 6.4	Remain within 10 NM
↑	hdg 050°		△		
*LOC only.		*I-GAO 2.1	JELON I-GAO 3	1700	179°
I-GAO 1.2		620*		359°	2000
				1700	GS 3.00° TCH 51
0.9 NM		0.9 NM		3.4 NM	
CATEGORY	A	B	C	D	
S-ILS 36		198-1/2	200 (200-1/2)		
S-LOC 36		320-1/2	322 (400-1/2)		
CIRCLING	440-1 440 (500-1)	560-1 560 (600-1)	640-1 3/4 640 (700-1 3/4)	640-2 640 (700-2)	

SC-4, 25 FEB 2021 to 25 MAR 2021

SC-4, 25 FEB 2021 to 25 MAR 2021