

VORTAC LAX <b>113.6</b> Chan 83	APP CRS <b>261°</b>	Rwy Idg TDZE Apt Elev	<b>4193</b> <b>63</b> <b>66</b>
---------------------------------------	------------------------	-----------------------------	---------------------------------------

# VOR RWY 25

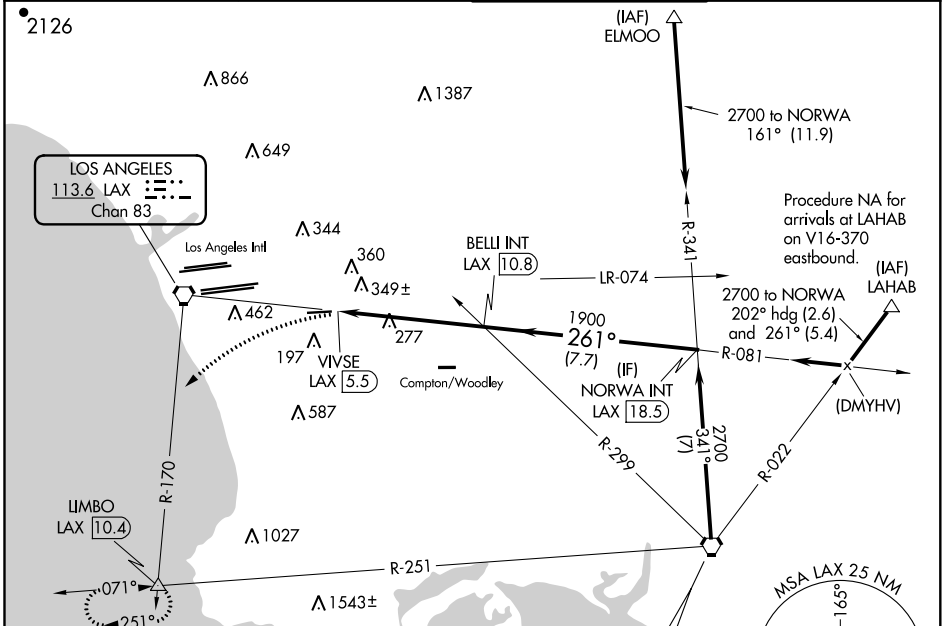
JACK NORTHROP FIELD/HAWTHORNE MUNI (HHR)

▼ Inoperative table does not apply. Circling NA north of Rwy 7-25.  
 ▲ Rwy 25 helicopter visibility reduction below 1 SM NA. Circling NA when control tower closed. When local altimeter setting not received, use Los Angeles Intl altimeter setting. Procedure NA at night

ODALS

MISSED APPROACH: Climbing left turn to 3000 via heading 210° and LAX VORTAC R-170 to LIMBO INT/LAX 10.4 DME and hold.

ATIS <b>118.4</b>	SOCAL APP CON <b>124.9 269.0</b>	HAWTHORNE TOWER* <b>121.1 (CTAF) 0 257.8</b>	GND CON <b>125.1</b>
----------------------	-------------------------------------	---	-------------------------



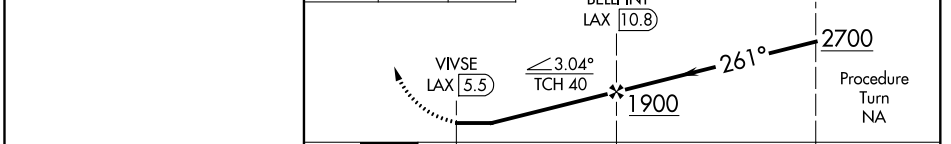
ELEV 66	TDZE 63
---------	---------



Procedure NA for arrivals at SLI VORTAC on V459-597 southeast bound.

Procedure NA for arrivals at LAHAB on V16-370 eastbound.

Procedure NA for arrivals at LIMBO INT/LAX 10.4 DME and hold.



REIL Rwy 25 MIRL Rwy 7-25	FAF to MAP 5.3 NM				
Knots	60	90	120	150	180
Min:Sec	5:18	3:32	2:39	2:07	1:46
<input checked="" type="checkbox"/> CIRCLING	620-1	554 (600-1)	780-2 714 (800-2)	600-1½ 537 (600-1½)	600-1¾ 537 (600-1¾)

# VOR RWY 25

SW-3, 25 FEB 2021 to 25 MAR 2021

SW-3, 25 FEB 2021 to 25 MAR 2021