


NDB HS	APP CRS	Rwy Idg	8497
221	181°	TDZE	23
		Apt Elev	23

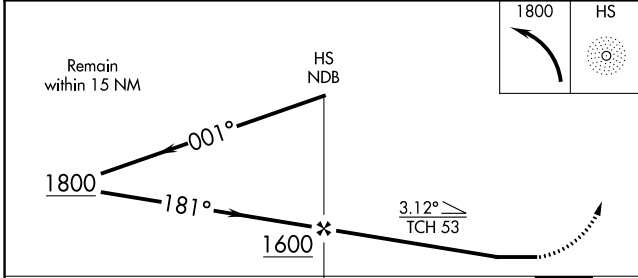
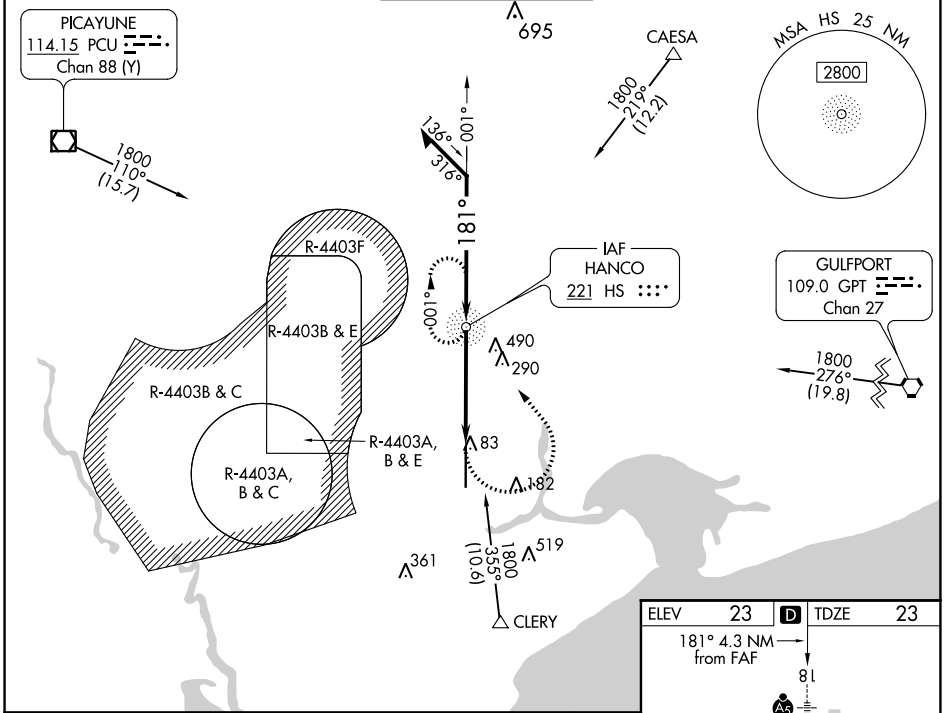
NDB RWY 18

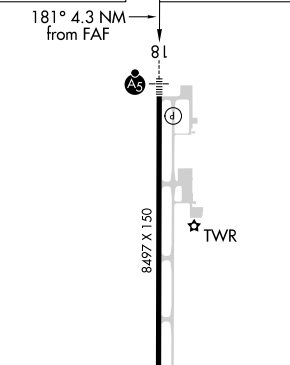
STENNIS INTL (HSA)

Procedure NA when R4403B and R4403E are active. Circling NA for Cat E west of Rwy 18-36.
⚠ When local altimeter setting not received use Gulfport altimeter setting and increase all MDAs 60 feet and increase S-18 Cat C/D/E and Circling Cat C visibility ½ SM and Circling Cat D/E visibility ¼ SM. For inop ALS, increase S-18 Cat A/B visibility to 1 SM, and Cat C/D/E visibility to 1½ SM. For inop ALS when using Gulfport altimeter setting, increase Cat C/D/E visibility to 1½ SM.

MALSRL

MISSED APPROACH:
 Climbing left turn to 1800 direct HS NDB and hold.

AWOS-3PT 118.375	GULFPORT APP CON* 124.6 354.1 (130°-309°) 127.5 254.25 (310°-129°)	STENNIS TOWER* 127.15 (CTAF) 0	GND CON 121.725	UNICOM 122.95
----------------------------	--	---	---------------------------	-------------------------



ELEV 23	D	TDZE 23																													
181° 4.3 NM from FAF																															
																															
REIL Rwy 36 0		36																													
HIRL Rwy 18-36 0		36																													
FAF to MAP 4.3 NM																															
<table border="1"> <tr> <th>Category</th> <th>A</th> <th>B</th> <th>C</th> <th>D</th> <th>E</th> </tr> <tr> <td>S-18</td> <td>600-¾</td> <td>577 (600-¾)</td> <td>600-1¼</td> <td>577 (600-1¼)</td> <td></td> </tr> <tr> <td>C CIRCLING</td> <td>600-1</td> <td>577 (600-1)</td> <td>600-1⅝</td> <td>820-2½</td> <td>820-2¾</td> </tr> </table>	Category	A	B	C	D	E	S-18	600-¾	577 (600-¾)	600-1¼	577 (600-1¼)		C CIRCLING	600-1	577 (600-1)	600-1⅝	820-2½	820-2¾	<table border="1"> <tr> <th>Knots</th> <td>60</td> <td>90</td> <td>120</td> <td>150</td> <td>180</td> </tr> <tr> <th>Min:Sec</th> <td>4:18</td> <td>2:52</td> <td>2:09</td> <td>1:43</td> <td>1:26</td> </tr> </table>	Knots	60	90	120	150	180	Min:Sec	4:18	2:52	2:09	1:43	1:26
Category	A	B	C	D	E																										
S-18	600-¾	577 (600-¾)	600-1¼	577 (600-1¼)																											
C CIRCLING	600-1	577 (600-1)	600-1⅝	820-2½	820-2¾																										
Knots	60	90	120	150	180																										
Min:Sec	4:18	2:52	2:09	1:43	1:26																										

SC-4, 25 FEB 2021 to 25 MAR 2021

SC-4, 25 FEB 2021 to 25 MAR 2021