

LOC/DME I-HWID 111.5	APP CRS 288°	Rwy Idg TDZE Apt Elev	5018 50 52
Chan 52			

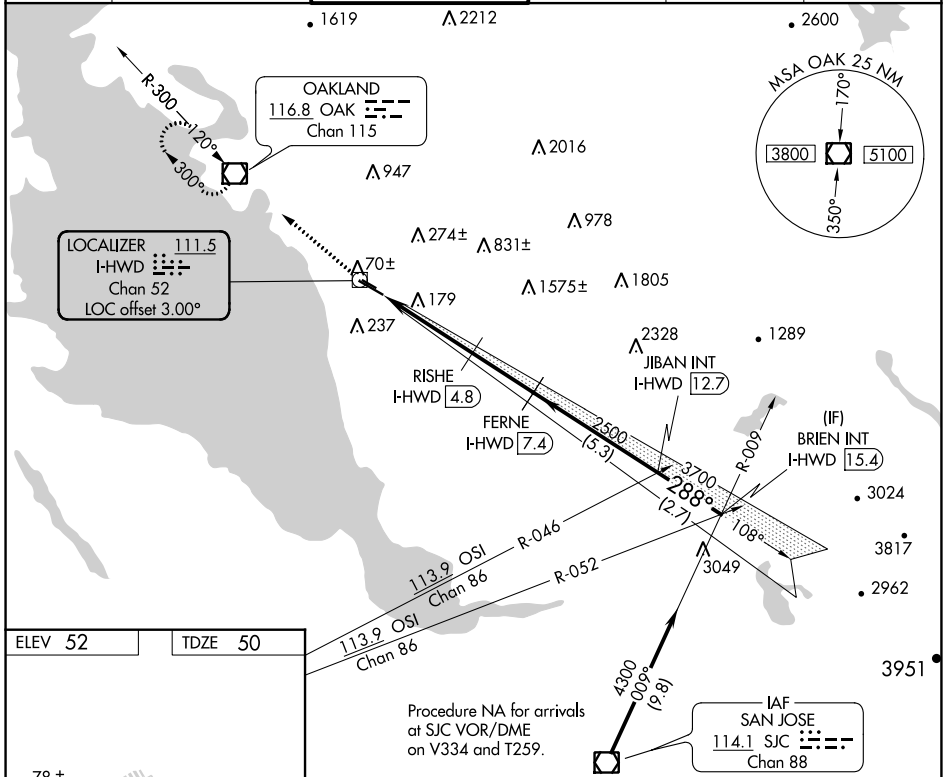
LOC/DME RWY 28L

HAYWARD EXECUTIVE (HWD)

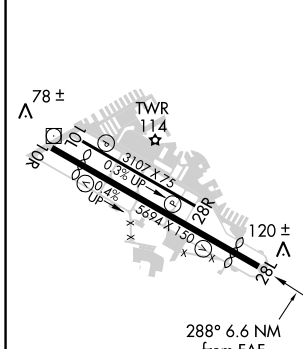
⚠ Circling NA north of Rwy 10L-28R. When local altimeter setting not received, use Oakland altimeter setting and increase all MDA 20 feet. Rwy 28L helicopter visibility reduction below $\frac{3}{4}$ SM NA.

MISSED APPROACH: Climb to 2100 direct OAK VOR/DME and hold.

ATIS 126.7	NORCAL APP CON 124.4 351.8	HAYWARD TOWER * 120.2 (CTAF) 257.8	GND CON 121.4	CLNC DEL 128.05	UNICOM 122.95
----------------------	--------------------------------------	---	-------------------------	---------------------------	-------------------------



ELEV 52	TDZE 50
---------	---------



MIRL Rwy 10R-28L
MIRL Rwy 10L-28R
REIL Rwy 10R and 28L

2100	OAK	VGSI and descent angles not coincident (VGSI Angle 4.00/TCH 35).	BRIEN INT I-HWID 15.4
			JIBAN INT I-HWID 12.7
			FERNE I-HWID 7.4
			RISHE I-HWID 4.8
			I-HWID 0.9
			3.44° TCH 35
			288°
			3700
			4300
			4 NM
			2.6 NM
			5.3 NM
			2.7 NM

CATEGORY	A	B	C	D
S-28L	500-1	450 (500-1)	500-1 $\frac{3}{8}$	450 (500-1 $\frac{3}{8}$)
CIRCLING	540-1	488 (500-1)	540-1 $\frac{1}{2}$ 488 (500-1 $\frac{1}{2}$)	620-2 568 (600-2)

SW-2, 25 FEB 2021 to 25 MAR 2021

SW-2, 25 FEB 2021 to 25 MAR 2021