

WAAS CH **58013**  
**W09A**

APP CRS **088°**

Rwy Idg **5100**  
 TDZE **916**  
 Apt Elev **926**

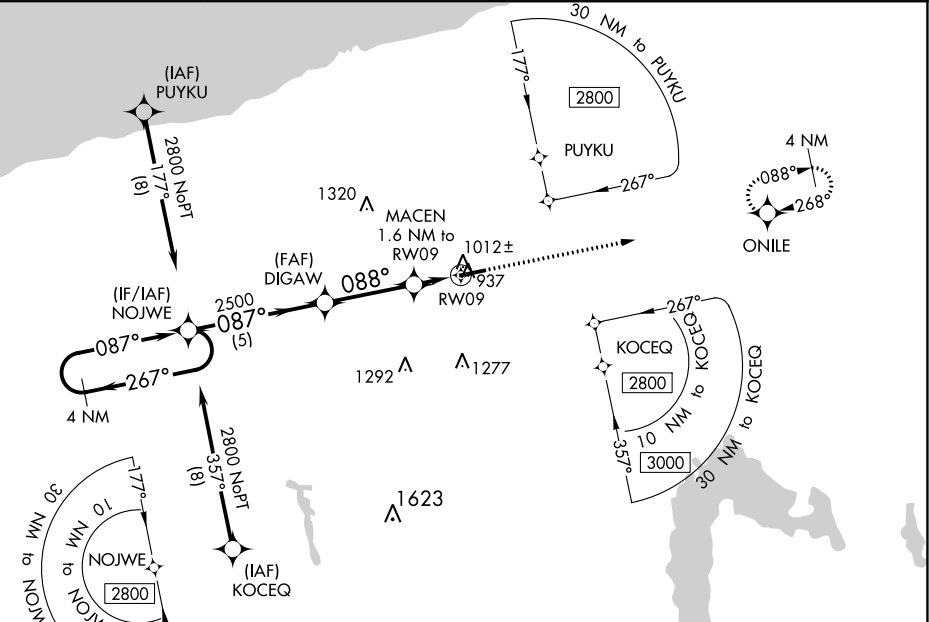
# RNAV (GPS) RWY 9

NORTHEAST OHIO RGNL (HZY)

For uncompensated Baro-VNAV systems, LNAV/VNAV NA below -21°C (-5°F) or above 54°C (130°F).  
 DME/DME RNP-0.3 NA.

MISSED APPROACH: Climb to 3000 direct ONILE and hold.

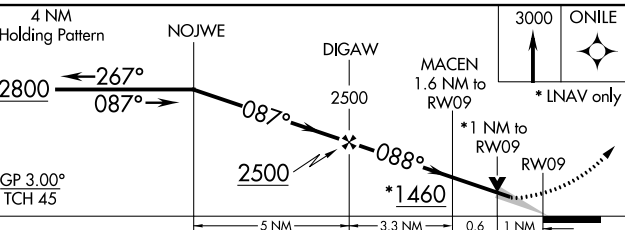
ASOS **118.325**      BUFFALO APP CON \* **121.0**      UNICOM **122.8** (CTAF)      **123.3**



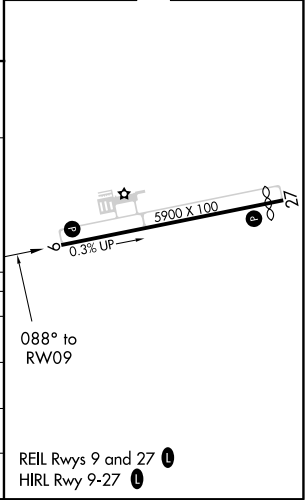
EC-2, 25 FEB 2021 to 25 MAR 2021

EC-2, 25 FEB 2021 to 25 MAR 2021

ELEV 926 TDZE 916



CATEGORY	A	B	C	D
LPV DA		1166-7/8	250 (300-7/8)	
LNAV/VNAV DA		1182-7/8	266 (300-7/8)	
LNAV MDA		1280-1	364 (400-1)	
CIRCLING	1340-1 414 (500-1)	1380-1 454 (500-1)	1500-1 1/2 574 (600-1 1/2)	1580-2 654 (700-2)



REIL Rwy 9 and 27   
 HIRL Rwy 9-27