

VOR/DME JFN 115.2 Chan 99	APP CRS 252°	Rwy Idg TDZE 925 Apt Elev 926	5100
---	------------------------	---	-------------

VOR RWY 27

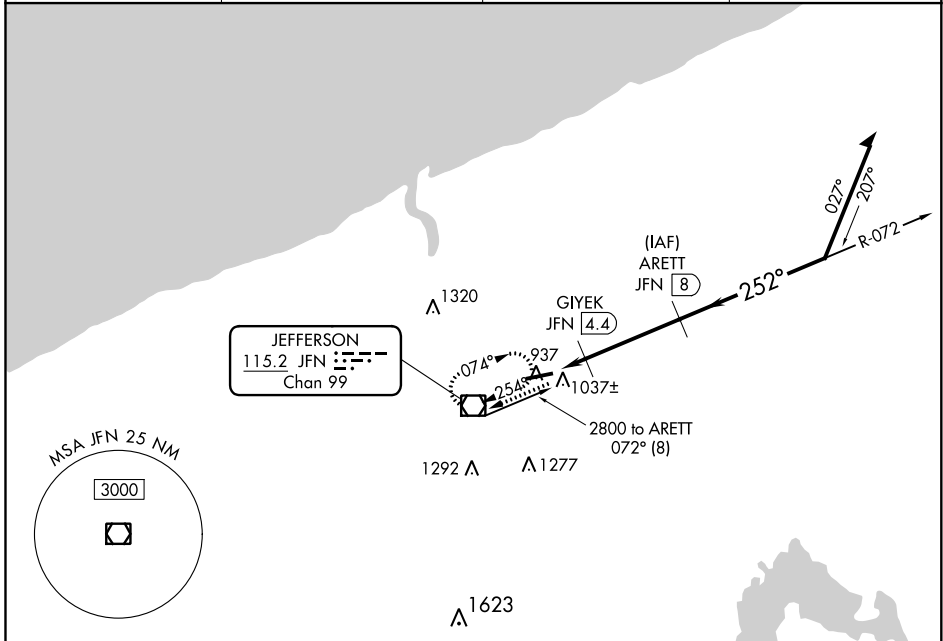
NORTHEAST OHIO RGNL (HZY)

DME Required. RADAR Required for Procedure Entry.

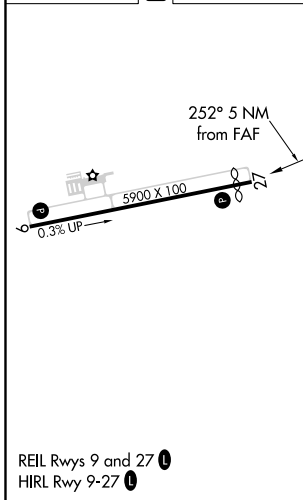
▼ Rwy 27 helicopter visibility reduction below 1 SM NA. Straight-in Rwy 27 NA at night.

MISSED APPROACH: Climb to 2800 direct JFN VOR/DME and hold, continue climb-in-hold to 2800.

ASOS 118.325	BUFFALO APP CON ★ 121.0	UNICOM 122.8 (CTAF)	123.3 0
------------------------	-----------------------------------	-------------------------------	----------------



ELEV 926	D	TDZE 925
----------	----------	----------



2800	JFN	ARETT JFN 8	Remain within 10 NM	
↑	☐		2800	
	JFN 3	GIYEK JFN 4.4	2600	
		3.03° TCH 45		
	1.4 NM	3.7 NM		
CATEGORY	A	B	C	D
S-27	1300-1 375 (400-1)			
C CIRCLING	1340-1 414 (500-1)	1380-1 454 (500-1)	1500-1½ 574 (600-1½)	1580-2 654 (700-2)

EC-2, 25 FEB 2021 to 25 MAR 2021

EC-2, 25 FEB 2021 to 25 MAR 2021