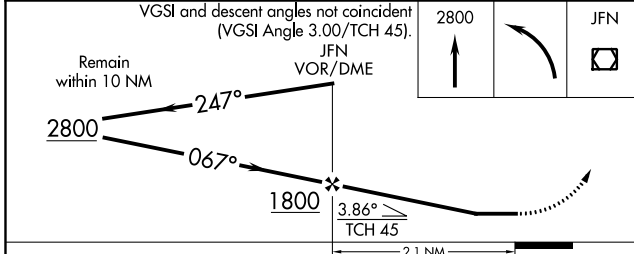
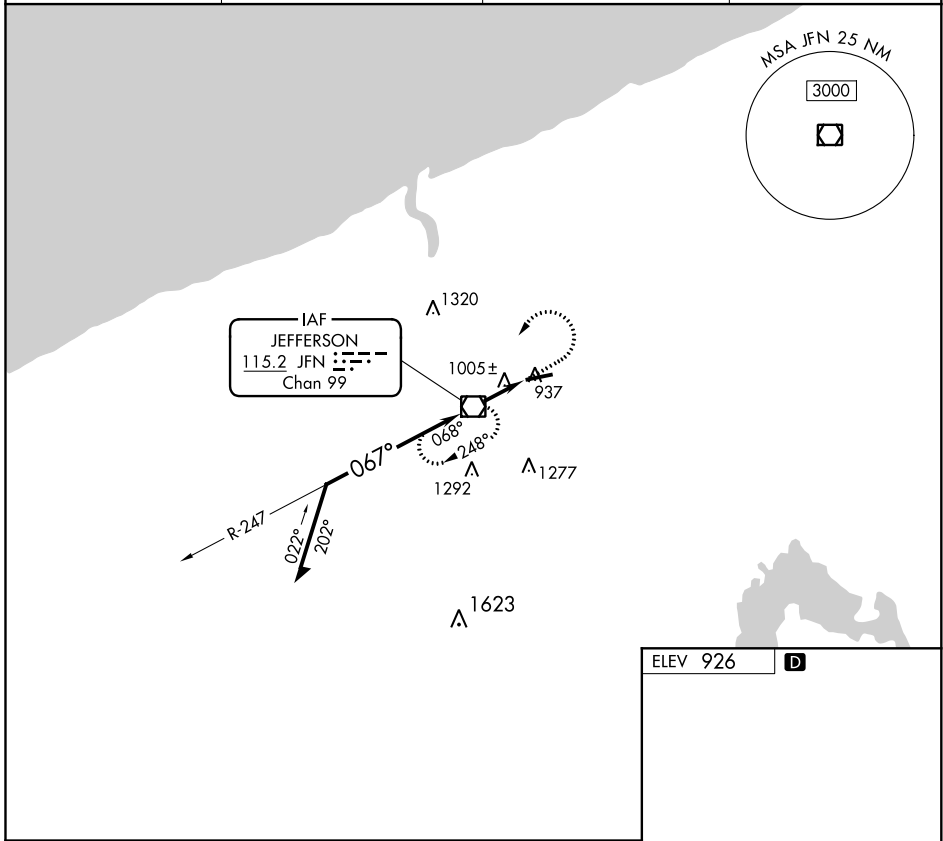


VOR/DME JFN <b>115.2</b> Chan <b>99</b>	APP CRS <b>067°</b>	Rwy Idg TDZE Apt Elev <b>926</b>	<b>N/A</b> <b>N/A</b> <b>926</b>
---	------------------------	---	--

**VOR-A**  
NORTHEAST OHIO RGNL (HZY)

RADAR Required for Procedure Entry.		MISSED APPROACH: Climb to 2800 then left turn direct JFN VOR/DME and hold.	
ASOS <b>118,325</b>	BUFFALO APP CON * <b>121.0</b>	UNICOM <b>122.8</b> (CTAF)	<b>123.3</b> <b>0</b>



ELEV 926	<b>D</b>			
REIL Rwys 9 and 27 <b>0</b>				
HIRL Rwy 9-27 <b>0</b>				
FAF to MAP 2.1 NM				
CATEGORY	A B C D			
<b>C</b> CIRCLING	1340-1 414 (500-1)	1380-1 454 (500-1)	1500-1½ 574 (600-1½)	1580-2 654 (700-2)
	Knots 60 90 120 150 180	Min:Sec 2:06 1:24 1:03 0:50 0:42		

EC-2, 25 FEB 2021 to 25 MAR 2021

EC-2, 25 FEB 2021 to 25 MAR 2021