

APP CRS	Rwy Idg	3397
070°	TDZE	70
	Apt Elev	70

RNAV (GPS) RWY 7

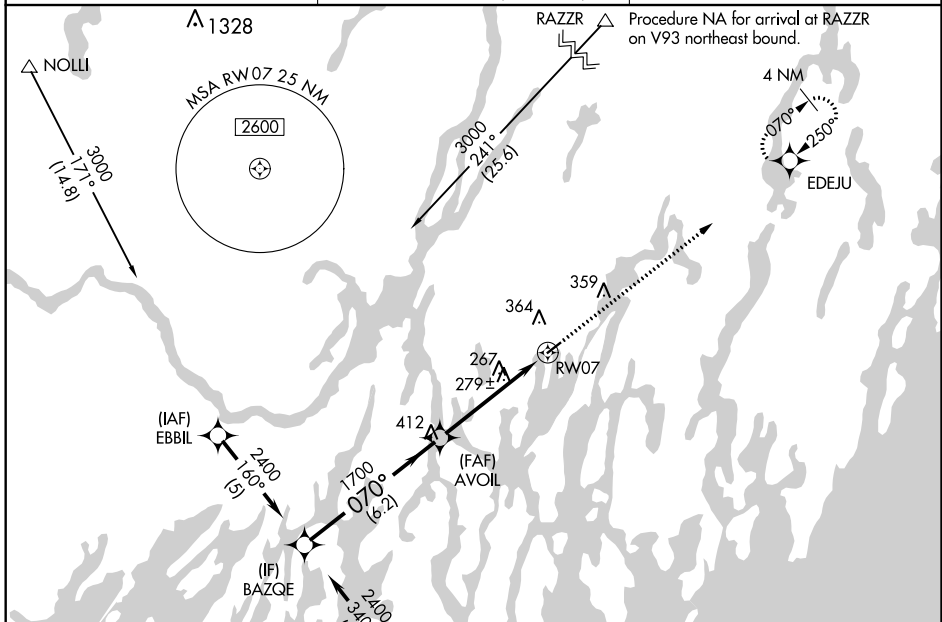
WISCASSET (IWI)

RNP APCH.

⚠ Procedure NA at night. Rwy 7 helicopter visibility reduction below 1 SM NA. When local altimeter setting not received use Rockland altimeter setting and increase all MDA 80 feet.

MISSED APPROACH: Climb to 3000 direct EDEJU and hold.

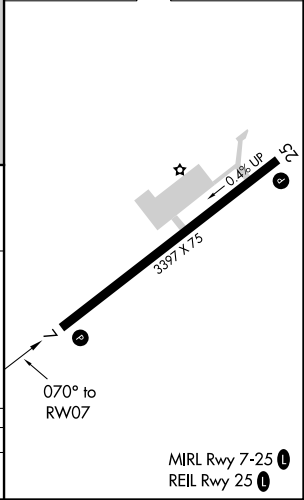
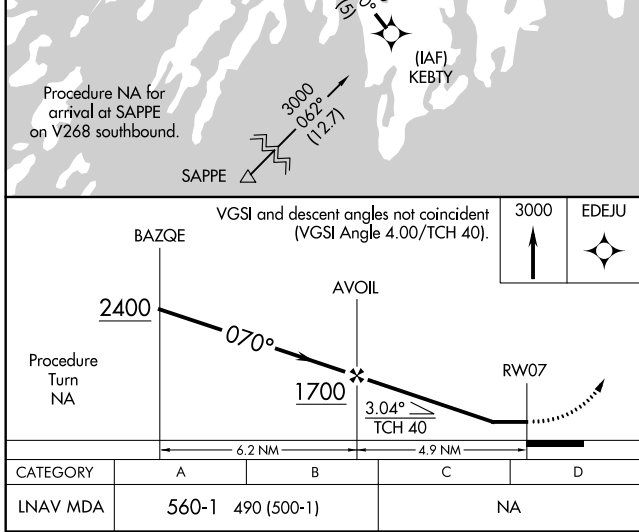
ASOS 135.725	PORTLAND APP CON★ 119.75 269.35 (112°-292°) 120.4 299.2 (293°-111°)	UNICOM 122.8 (CTAF) 0
------------------------	---	--



NE-1, 25 FEB 2021 to 25 MAR 2021

NE-1, 25 FEB 2021 to 25 MAR 2021

ELEV 70	TDZE 70
---------	---------



MIRL Rwy 7-25 **0**
REIL Rwy 25 **0**