

WAAS CH 72725 W20A	APP CRS 199°	Rwy Idg THRE 139 Apt Elev 145	5500
----------------------------------------	------------------------	---------------------------------------------------	-------------

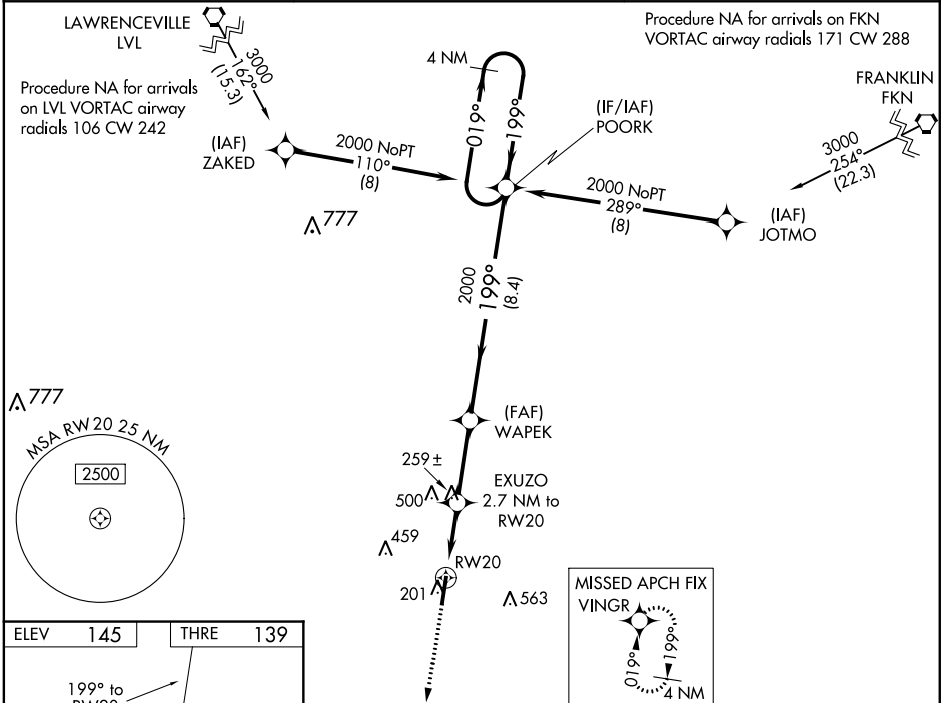
RNAV (GPS) RWY 20

HALIFAX-NORTHAMPTON RGNL (IXA)

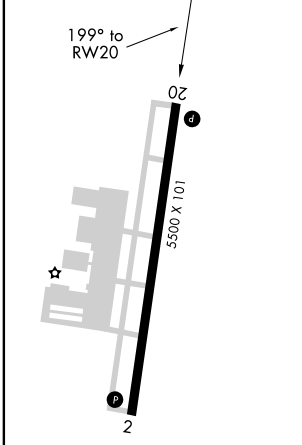
⚠ For uncompensated Baro-VNAV systems, LNAV/VNAV NA below -15°C (5°F) or above 42°C (107°F).
 DME/DME RNP-0.3 NA. When local altimeter setting not received, use Ahsoskie altimeter setting and increase all DA 63 feet and all MDA 80 feet, increase LPV all Cats visibility 1/8 mile, LNAV/VNAV all Cats and LNAV Cats C/D visibility 1/4 mile. VDP and Baro-VNAV NA when using Ahsoskie altimeter setting. Circling NA east of Rwy 2-20.

MISSED APPROACH:
 Climb to 2000 direct VINGR and hold.

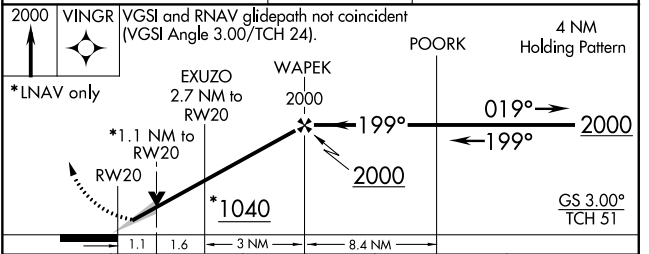
ASOS 119.975	WASHINGTON CENTER 132.02 290.425	UNICOM 123.075 (CTAF)
------------------------	--------------------------------------------	---------------------------------



ELEV 145	THRE 139
-----------------	-----------------



HIRL Rwy 2-20
 REIL Rwy 2 and 20



CATEGORY	A	B	C	D
LPV DA		339-3/4	200 (200-3/4)	
LNAV/VNAV DA		415-7/8	276 (300-7/8)	
LNAV MDA	520-1	381 (400-1)	520-1/8	381 (400-1/8)
CIRCLING	560-1 415 (500-1)	600-1 455 (500-1)	600-1/2 455 (500-1/2)	700-2 555 (600-2)

SE-2, 26 JUN 2014 to 24 JUL 2014

SE-2, 26 JUN 2014 to 24 JUL 2014