

VOR/DME RWY 2

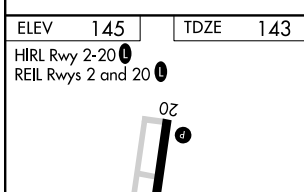
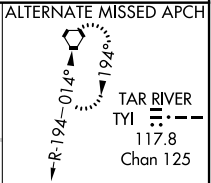
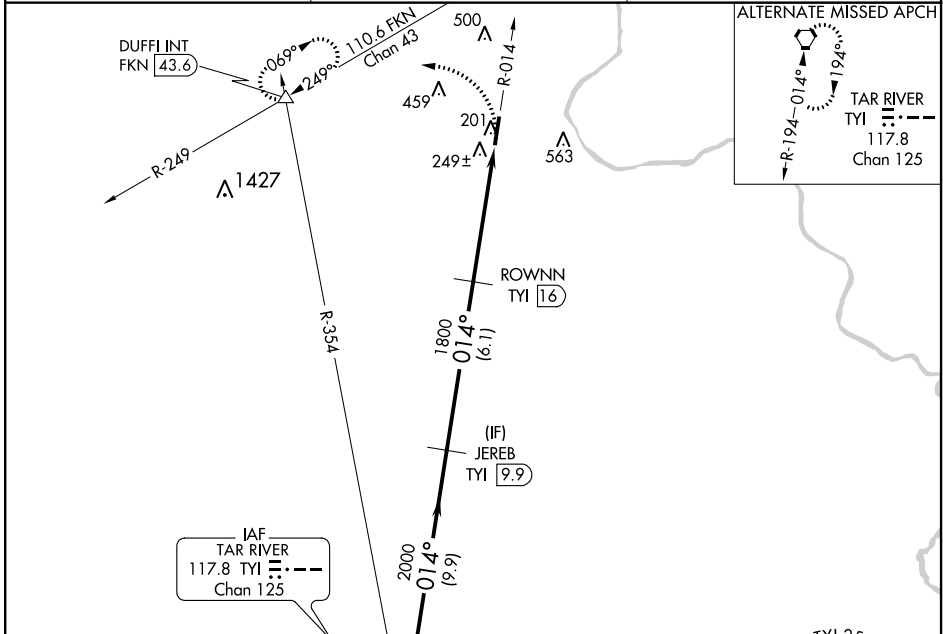
HALIFAX-NORTHAMPTON RGNL (IXA)

APP CRS 014°	Rwy Idg 5500
	TDZE 143
	Apt Elev 145

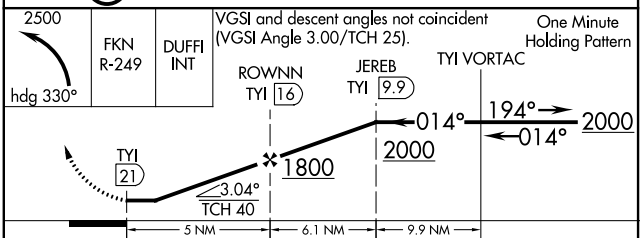
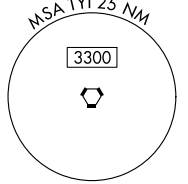
▲ Circling NA east of Rwy 2-20. When local altimeter setting not received, use Ahoskie altimeter setting and increase all MDA 80 feet, increase S-2 and Circling Cats. C/D visibility ¼ mile.

MISSED APPROACH: Climbing left turn to 2500 via heading 330° and FKN VORTAC R-249 to DUFFI INT/FKN 43.6 DME and hold, continue climb-in-hold to 2500.

ASOS 119.975	WASHINGTON CENTER 132.02 290.425	UNICOM 123.075 (CTAF)
------------------------	--	---------------------------------



NoPT for arrivals on TYI VORTAC airway radials 082 CW 269.



CATEGORY	A	B	C	D
S-2	760-1 617 (700-1)	760-1¼ 617 (700-1¼)	760-1¾ 617 (700-1¾)	760-2 617 (700-2)
CIRCLING	760-1 615 (700-1)	760-1¼ 615 (700-1¼)	760-1¾ 615 (700-1¾)	760-2 615 (700-2)

SE-2, 26 JUN 2014 to 24 JUL 2014

SE-2, 26 JUN 2014 to 24 JUL 2014