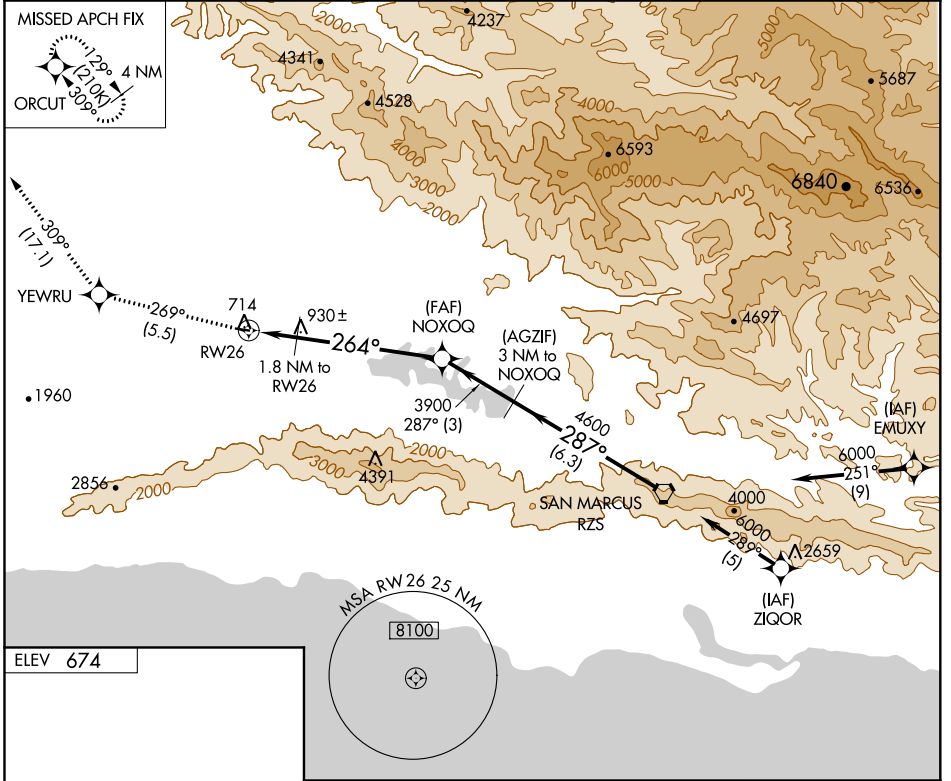


APP CRS 264°	Rwy Idg TDZE Apt Elev N/A N/A 674
------------------------	---

GPS-A
SANTA YNEZ (IZA)

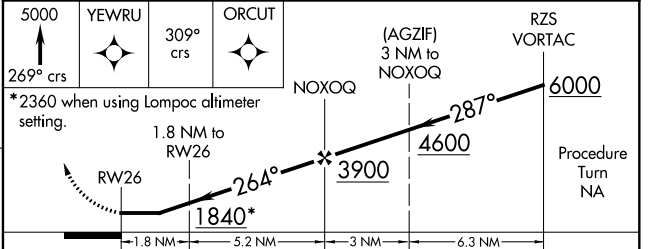
<p>▽ Obtain local altimeter setting on CTAF, when not received, except for operators with approved weather reporting service, use LompoC altimeter setting.</p> <p>△ NA</p>	<p>MISSED APPROACH: Climb to 5000 via 269° course to YEWRU WP, then via 309° course to ORCUT WP and hold.</p>
---	--

AWOS-3 118.075	SANTA BARBARA APP CON* 124.15 327.8	UNICOM 122.8 (CTAF) 0
--------------------------	---	---------------------------------



ELEV 674

REIL Rwy 8 and 26
MIRL Rwy 8-26



CATEGORY	A	B	C	D
CIRCLING	1120-1 446 (500-1)	1160-1 486 (500-1)	NA	
LOMPOC ALTIMETER SETTING MINIMUMS				
CIRCLING	1640-1¼ 966 (1000-1¼)	1680-1½ 1006 (1100-1½)	NA	

SW-3, 25 FEB 2021 to 25 MAR 2021

SW-3, 25 FEB 2021 to 25 MAR 2021