

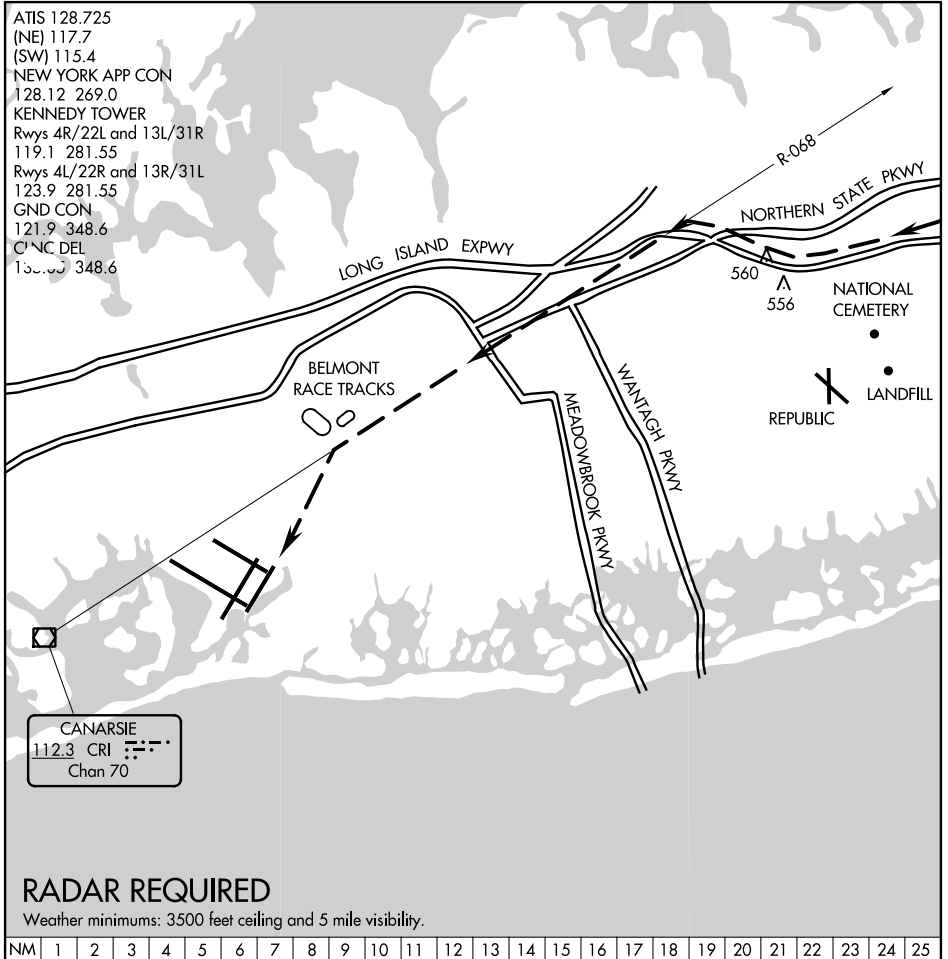
Orig 13290

BELMONT VISUAL RWY 22L

AL-610 (FAA)

JOHN F. KENNEDY INTL (JFK)
NEW YORK, NEW YORK

ATIS 128.725
 (NE) 117.7
 (SW) 115.4
 NEW YORK APP CON
 128.12 269.0
 KENNEDY TOWER
 Rwy's 4R/22L and 13L/31R
 119.1 281.55
 Rwy's 4L/22R and 13R/31L
 123.9 281.55
 GND CON
 121.9 348.6
 C/N/C DEL
 123.5 348.6



NE-2, 26 JUN 2014 to 24 JUL 2014

NE-2, 26 JUN 2014 to 24 JUL 2014

RADAR REQUIRED

Weather minimums: 3500 feet ceiling and 5 mile visibility.

NM	1	2	3	4	5	6	7	8	9	10	11	12	13	14	15	16	17	18	19	20	21	22	23	24	25
----	---	---	---	---	---	---	---	---	---	----	----	----	----	----	----	----	----	----	----	----	----	----	----	----	----

BELMONT VISUAL RUNWAY 22L

When cleared for the Belmont Visual Approach to Runway 22L, follow the Long Island Expressway westbound until intercepting CRI R-068 at 3000'. Navigate on CRI R-068 till abeam Belmont Race Track at 1600'. Remain east of Belmont Race Track and proceed direct to JFK Runway 22L.

BELMONT VISUAL RWY 22L

40° 38'N - 73° 47'W

Orig 13290

NEW YORK, NEW YORK
JOHN F. KENNEDY INTL (JFK)